



Higher Education PROSPECTUS

2019 - 2020



Welcome to The City of Liverpool College

I'm pleased that you are considering The City of Liverpool College for your next step into education and a successful career. Our higher education programmes are first class with a gold standard in teaching and designed in partnership with employers and universities to get you where you want to go.

Becoming a City of Liverpool College student gives you access to specialist facilities and award winning tutors who bring with them a wealth of knowledge and industry experience, as well as helping you to reach employers who are leaders in their fields. The quality of our teaching is recognised nationally: in 2017, The City of Liverpool College was awarded a 'Gold' standard under the Teaching Excellence Framework, awarded by the Higher Education Funding Council for England (HEFCE) for its quality and standards of education. We offer a high quality academic experience and unique opportunities for progression as a result of our strong links with industry and partnerships with other higher education institutions.

Many of our graduates choose to stay with The City of Liverpool College to continue studying at Honours degree level, with a range of qualifications on offer from Higher National Certificates and Diplomas, Foundation Degrees and clearly mapped out progression opportunities for those wanting to 'top up' to honours degree level.

It isn't all about work: our students have access to a thriving Student Union and extra-curricular opportunities, with our student engagement team providing support not only for college wide social events but also support for students who want to develop their own business ideas and ambitions. Learning can also be tailored to your needs, with flexible study on offer that works around your employment and home commitments.

Those students who graduate and go on to study elsewhere find that the qualifications earned with us stand them in good stead as preparation for that next step.

I hope you'll take the next step to a successful career with The City of Liverpool College as one of our students. In doing so, you'll become a valued member of the student community – respected, challenged, and supported to succeed.



Elaine Bowker
Principal & Chief Executive



Contents

• Why study Higher Education at The City of Liverpool College?	5
• A central campus - in the heart of the city	8
• Higher level qualifications explained	9
• Student Services and Support	11
• Financial Support for Higher Education	3
• All Course Information and Application	15
• HE course listing	17
• HE Open Events - 2018-19	144

ART, DESIGN AND FASHION ---

• Fashion and Textiles - Higher National Certificate	20
• Fashion - Higher National Diploma Top-Up	22
• Photography - Higher National Certificate	24
• Photography - Higher National Diploma Top-Up	26

COMPUTER SCIENCE AND DIGITAL ---

• Computing - Higher National Certificate	30
• Computing - Higher National Diploma Top-Up	32
• Computing - BSc (Hons) Top-Up	34
• Creative Media Production (Game Development) - Higher National Certificate	36
• Creative Media Production (Game Development) - Higher National Diploma Top-Up	38
• Game Design - BA (Hons) Top-Up	40
• Games Design and Concept Art - BA (Hons)	42

CONSTRUCTION AND ENGINEERING ---

• Construction and the Built Environment (Building Services -Electrical) - Higher National Cert.	46
• Construction and the Built Environment (Building Services -Heating, Ventilation & Air Conditioning) - Higher National Certificate	48
• Construction and the Built Environment (Civil Engineering) - Higher National Certificate	50
• Construction and the Built Environment (Construction) - Higher National Certificate	52
• Construction and the Built Environment (Surveying) - Higher National Certificate	54
• Electrical and Electronic Engineering - Higher National Certificate	56
• Engineering (Manufacturing) - Higher National Certificate	58
• Engineering (General) - Higher National Diploma Top-Up	60

HEALTH AND SOCIAL CARE ---

• Dental Technology - Foundation Degree	64
• Dental Technology - BSc (Hons) Top-Up	66
• Early Years Practice - Foundation Degree	68
• Early Childhood Studies - BA (Hons) Top-Up	72
• Healthcare Practice - Higher National Certificate	74
• Healthcare Practice - Higher National Diploma Top-Up	76

HOSPITALITY, TOURISM AND SPORT 79

- Hospitality Management - Higher National Certificate 80
- Hospitality Management - Higher National Diploma Top-Up 82
- Sport and Exercise Science - Higher National Certificate 84
- Sport and Exercise Science - Higher National Diploma Top-Up 86
- Sports Coaching - BA (Hons) Top-Up 88
- Tourism and Leisure or Tourism, Leisure and Hospitality - Foundation Degree 90

MATHEMATICS AND SCIENCE 93

- Applied Science: Biology - Higher National Certificate 94
- Applied Science: Biology - Higher National Diploma Top-Up 96
- Applied Science: Chemistry - Higher National Certificate 98
- Applied Science: Chemistry - Higher National Diploma Top-Up 100

MEDIA, MUSIC AND PERFORMING ARTS 103

- Music Production - Higher National Certificate 104
- Music Production - Higher National Diploma Top-Up 106
- Performing Arts (Acting) - Higher National Certificate 108
- Performing Arts (Acting) - Higher National Diploma Top-Up 112
- Performing Arts (Dance) - Higher National Certificate 116
- Performing Arts (Dance) - Higher National Diploma Top-Up 118
- Performing Arts (Musical Theatre) - Higher National Certificate 120
- Performing Arts (Musical Theatre) - Higher National Diploma Top-Up 122
- Performing Arts (Acting/Dance/Musical Theatre) - BA (Hons) Top-Up 124
- Popular Music - Foundation Degree 126
- Popular Music and Music Production - BA (Hons) Top-Up 130

SOCIAL SCIENCE AND BUSINESS 133

- Business - Higher National Certificate 134
- Business - Higher National Diploma Top-Up 136

TEACHER EDUCATION AND TRAINING 139

- Education and Professional Development - BA (Hons) 140
- Teacher Training Pre-Service (Lifelong Learning): 142
 - Certificate in Education
 - Professional Graduate Certificate in Education
 - Postgraduate Certificate in Education
 - Postgraduate Diploma in Education
- Teacher Training In-Service (Lifelong Learning): 144
 - Certificate in Education
 - Professional Graduate Certificate in Education
 - Postgraduate Certificate in Education
 - Postgraduate Diploma in Education

Why study Higher Education at The City of Liverpool College?

Our programmes have been designed in consultation with universities and employers to produce graduates with the subject knowledge and higher level skills valued in the workplace. We offer Honours degrees, Higher National Certificates and Diplomas and Foundation Degrees (see HE course listing - page 17).

Teaching Excellence Framework (TEF)

In a recent assessment, The City of Liverpool College was awarded the highest rating - Gold award in the Teaching Excellence Framework (TEF) for quality of its Higher Education provision.

The findings included the following:

- Outstanding levels of satisfaction in all areas, including in academic support across all student groups
- Very high levels of students continue with their studies
- A strategic focus on vocational and professional education, developed in response to employer demand and relevant placement opportunities
- A College-wide culture that facilitates widening access to HE for a diverse student population from all backgrounds, to realise their potential and achieve positive outcomes
- An established and embedded culture that facilitates, recognises and rewards excellent teaching
- Personalised learning supported by an effective, robust personal tutoring system that regularly monitors progress
- Specialist support for students with disabilities

- High quality learning and teaching environments, actively and consistently used by students to enhance learning.

Higher Education Funding Council for Education (HEFCE) Review

In the latest Annual Provider Review by HEFCE, The City of Liverpool College fully meets its requirements for quality and standards. This means that:

- Qualification standards are reliable and reasonably comparable to those across the UK;
- The Student academic experience is of high quality;
- Student outcomes are generally good or excellent and the provider has demonstrated continuous improvement in relation to them.

If you choose to study Higher Education at The City of Liverpool College, you can also be sure of:

- Award winning, highly trained tutors with relevant industry experience
- Low cost, higher education with links to the region's top universities and employers
- City Centre campus with state-of the art facilities and industry standard equipment
- Supported learning and one to one tutor support
- Extra help towards costs associated with the course.

The college has formal partnership agreements with the following higher education institutions:

- Liverpool John Moores University
- The Open University
- University of Huddersfield



Altogether, the universities validate six foundation degrees, nine degrees (Honours and Top-Up) and one postgraduate certificate, as well as a suite of initial teacher education programmes at levels 4 and 5, and the College's Higher National Qualifications are awarded by Pearson.

Many of our graduates carry on with their studies and in the case of foundation degrees, there are clearly mapped out progression opportunities for those who want to top up to an Honours degree.

College entry requirements

The college welcomes applications from those with relevant experience in lieu of the minimum entry requirements.

The College uses UCAS tariff points to standardise entry requirements and make it easier to compare applicants for courses. Therefore, after converting qualifications achieved, applicants should hold a total tariff score for all relevant qualifications of at least 96 points.

Use the UCAS tariff value calculator to check your qualifications at:
<https://www.ucas.com/ucas/tariff-calculator>.

Applicants with no relevant, formal qualifications may still meet entry requirements through the process of Accreditation of Prior Learning (APL), which awards academic credits through recognition of prior learning via work and other life experiences.

APL is either certificated (APCL) through formal assessment, or Experiential (APEL) via skills and knowledge developed through work and voluntary activities.

It is expected that all applicants will hold relevant Level 2 maths and English qualifications equivalent to GCSE grade C or above.

Mature students (over 21) without formal qualifications may be accepted subject to satisfactory literacy and numeracy tests, work experience (if applicable) and a strong personal statement.

English language requirements

All students who are non-native English speakers and who have not undertaken their final two years of schooling in English, can demonstrate capability in English at a standard equivalent to the levels identified below, before being recruited to the programme where the programme is both taught and assessed in English:

- Common European Framework of Reference (CEFR) level B2
- PTE 51
- IELTS 5.5; Reading and Writing must be at 5.5
- or equivalent.

What you need to know about studying on a Higher Education course with The City of Liverpool College

As you consider studying on a higher education (HE) programme with The City of Liverpool College (The College), we would like to advise you of your rights and responsibilities should you choose to accept the offer of a place on a higher education programme delivered by the College.

The Consumer Rights Act 2015 - set by the Competition and Markets Authority (CMA) - fully applies to The City of Liverpool College and its relationship with all HE applicants and current students. Compliance with consumer law is not only important in giving you the protection required by the law, but it also helps to maintain student confidence, standards and reputation of the UK HE sector.

A short summary of the guidance is available online here:
<https://www.gov.uk/government/publications/higher-education-a-short-guide-to-consumer-rights-for-students>.

The full guide on your rights as a consumer are available online:
<https://www.gov.uk/government/publications/higher-education-guide-to-consumer-rights-for-students>.

During your HE course research and application stage, HE course information is made available to ensure that you are making your decisions based on accurate, up to date and complete information.

You can find all information in the Prospectus on our website via www.liv-coll.ac.uk

If you choose to accept the offer to study on a HE programme with the College, you will enter into a contract stage with the College and will need to inform us in writing of your choice. By accepting the offer of a place, we will ask you to acknowledge and agree with our Terms and Conditions of study, available on our website: <http://www.liv-coll.ac.uk/Higher-Education-a5.html>.

We hope this information is useful and that you have received sufficient initial knowledge about the higher education programme you intend to apply for with The City of Liverpool College.

Please contact us at:
HEoffice@liv-coll.ac.uk or call College Information on **0151 252 3000** should you require further guidance and clarification in relation to your HE course information.

Disclaimer

The City of Liverpool College makes every possible effort to ensure that the information published is accurate and up-to-date at the time of going to print, but we accept no legal liability for errors or omissions, and reserve the right to make changes without notice. See full terms and conditions on our website for more information.

A central campus - In the heart of the city

The College's state-of-the-art campus has been built with you in mind.

World class facilities and centralised student finance and support services, provide students with a learning experience like no other.

This includes:

- Specialist hi-tech learning laboratories for HE students studying on dental, engineering and science-based programmes
- Dedicated HE social and study space on each city centre campus
- £2.5m investment in our digital academy with the latest industry standard technology and Microsoft Academy status – putting digital skills at the heart of education"
- LRC with easy access to resources and information and flexible opening hours to suit your study requirements
- Student support services for all your learning, financial and wellbeing needs
- Student Union amenities and social space for relaxation
- Purpose-built sports facilities with fully equipped gym and sports hall
- Health room for private advice supported by Brook and other agencies
- 'Classroom of the future' - teaching space for flexible, technology-led learning
- Performance theatre, professional music production studios and mixing desks and the largest green screen facility in the city
- City centre conference and entertainment facilities.

College Campus:



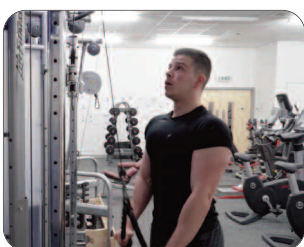
Arts Centre, L7 7JA



Clarence Street, L3 5TP



Duke Street, L1 5BG



Learning Exchange, L1 9DW



Vauxhall Road, L3 6BN



Higher level qualifications explained

Framework for Higher Education Qualifications (FHEQ)

The Framework for Higher Education Qualifications (FHEQ) has been designed by the higher education sector and describes all main higher education qualifications.

Foundation Degree

A foundation degree is a level 5 qualification - broadly equivalent to the first two years of a degree level programme - that combines academic study and work-based learning. It is specifically designed to give you the skills and knowledge needed to progress to a full Bachelor's degree. Students who are unsure of their skill levels can take a foundation degree before progressing on to a full degree programme.

Higher National Certificates (HNCs) and Higher National Diplomas (HNDs)

If you want to gain a recognised higher level qualification and develop your skills and knowledge to do a specific job, a HNC or HND could be for you. HNCs and HNDs are known to focus on 'learning by doing' and can prepare you for a new career, or help you to progress in your current job.

HNCs and HNDs are provided by over 400 universities and further education colleges. HNCs can be completed in one year full time and over two years part time. Typically the College offers HNDs over two years, HNC in the first year, and a HND Top-Up in the second year.

Honours Degree

An Honours degree normally requires 3 years full time study to complete; it can also be taken part time. The final year will involve the production of a dissertation.

Top-Up Degree

A Top-Up degree is equivalent to the final year of BA (Hons) or BSc (Hons) degree, giving you a Bachelor's level qualification. These courses enable you to 'top-up' an existing qualification such as a Foundation degree or Higher National Diploma (HND).

Higher Vocational Qualifications

Higher vocational qualifications cover a wide range of careers and come in five different qualification types. The College has an exceptional range of higher education professional - including work based - qualifications.

These programmes allow the flexibility to work and study at the same time, giving students, employers and employees the option to efficiently develop and nurture skills within the workplace.

The qualifications involve several different course related elements/units involving a combination of classroom-based learning and/or work place assessment.

The College provides industry standard facilities and outstanding tutors to ensure you get the very best experience from your chosen programme.

Higher education work-based learning programmes vary in duration but will typically cover a twelve to twenty-four month period.

Qualifications Explained

Level	HE Qualification	Progression
3	A-Level	➤
4	HNC - Certificate of HE	➤
5	HND - Diploma of HE & Foundation Degree	➤
6	Bachelor's Degree	➤
7	Master's Degree and Post Graduate Certificate	➤



Student Services and Support



Student Services and Support

Support for students covers a range of different needs, not only around learning but also in the support needed to come to college. Our friendly team will help you every step of the way to ensure your time in college is hassle free.

They can help with important things such as:

- applying for extra funds for travel, food and childcare
- enrolment and exam entry
- help with a range of welfare and financial issues.

For further details, call College Information on: 0151 252 3000

Careers Advice and Guidance

Our qualified and experienced careers advisers offer professional, confidential advice and guidance to students and prospective applicants. They will help you to:

- choose the right course
- complete your UCAS application
- research and choose a career
- prepare to look for jobs.

Contact the Careers Advice & Guidance Team on 0151 252 3967 or email

careersadvice@liv-coll.ac.uk or drop in to The Learning Exchange, Roscoe Street, L1 9DW

Mon-Fri 8.30 - 4.30pm for more information.

Entrepreneurship and Employability

Develop your employability and entrepreneurial skills whilst studying.

Student employability starts with the College's HE Strategy and is visible in a variety of aspects of the College's higher education provision. The strategy prioritises development of students' employability skills by working with local employers and professional bodies.

Employability is supported through the curriculum with opportunities for students to take part in work placements, internships and work-related activities. Support is also provided in securing employment through preparation of CVs, employability tutorials and interview skills. There is a dedicated employability area on the College's virtual learning environment (VLE). The College also encourages teaching staff to be actively involved in industry and maintain current industry links.

Disabled Students

All HE students can access a variety of college-wide facilities and services, including state-of-the-art learning resource centres and a range of health and wellbeing support.

The College welcomes applicants with disabilities and is proactive both in anticipating needs, and in making reasonable adjustments to ensure that disabled students are welcomed and treated fairly. You do not have to tell us about a disability, but we positively welcome disclosure at any point during your studies, as informing us will ensure that any necessary support from disability specialists or teaching staff can be put in place.

As a disabled student, you may be eligible for the Disabled Student Allowance (DSA) which is a grant that can help to meet any extra course costs you may face as a result of your disability, an ongoing health condition, a mental health condition or a specific learning difference.

For more information, contact:

DSA@liv-coll.ac.uk / 0151 252 3595

Accommodation

STUDENT ACCOMMODATION IN LIVERPOOL



The College does not provide accommodation for students. However, there are several companies with student rental properties located in and around Liverpool city centre, some of which are listed below.

Liverpool Student Homes (LSH) www.liverpoolstudentpad.co.uk

The Student Housing Company

Ablett House

2 Great Crosshall Street

Liverpool L3 2AF

Monday to Friday, 11.00 - 5.30pm

0151 214 3370

<http://thestudenthousingcompany.com/>

Liverpool Student Lets

72 - 76 Renshaw Street

Liverpool L1 4EN

0151 703 6588

<http://www.liverpoolstudentlets.co.uk/html/lsl/>

Hope Street Apartments

Hope Street

Liverpool L1 9BR

+44 (0)151 329 3087

<https://hoststudents.com/locations/liverpool/hope-street/>

Graduation Ceremony

At the end of your HE programme, graduating students are invited to take part in a graduation ceremony in July in celebration of their achievements.

Full details will be made available on the Higher Education VLE page.

Financial Support for Higher Education

Government financial support is available - loans, which have to be paid back, and grants and bursaries that don't. Some student financial support depends upon your household income - that is, the income of your parents or your husband, wife or partner.

Tuition Fee Loan

You can get a Tuition Fee Loan to cover tuition fees. This has to be paid back, but not until the April after you finish or leave your course and your income is over £25,000 a year.

Tuition fees are paid directly to the College in three instalments.

The City of Liverpool College's tuition fees are set as follows:

- Full time fees - these range from £6,313 to £7,957
- Part time fees - these range from £3,065 to £5,305.

Maintenance Loan

Maintenance loans replace maintenance/special support grants for new full time students.

- The maximum maintenance support for students from low income households living away from home and studying outside London will be £8,200 a year.
- The maximum maintenance support for new students entitled to benefits living away from home and studying outside London will be £9,347.
- Maintenance loans replace special support grants for new full time students who are entitled to welfare benefits and those aged 18 or over at the start of their course.

You have to pay it back but not until you finish or leave your course and your income is over £25,000 a year.

Additional Grants

Extra help is available for disabled students and student parents.

For more information on additional help available, take a look at the quick guides on Disabled Students' Allowances and Dependants' Grants, available at:
www.thestudentroom.co.uk/studentfinance

How to Apply

When the time comes to apply, the quickest and easiest way is online at
www.gov.uk/studentfinance

You should apply as early as possible once the service opens in early 2019 to make sure your money is sorted out in time for the start of your course.

Student Loan Repayment

Repayments are taken out of your salary. The amount you repay each month is based on your income and not amount borrowed.

For more information on loan repayment, visit:
www.studentloanrepayment.co.uk

Information correct at time of going to publication.

College Bursaries

1) The City of Liverpool College Bursary

Full time student eligibility criteria:

- has a household income up to £30,000
- is in receipt of any of the following grants/allowances: Special Support Element of the Maintenance Loan; Parents' Learning Allowance; Childcare Grant; Disabled Students' Allowance
- is resident in the EU.

Part time student eligibility criteria:

- has a household income up to £30,000
- is in receipt of the following grants/welfare benefits: Disabled Students' Allowance; Jobseeker's Allowance; Income Support;

Employment and Support Allowance;
Carer's Allowance

- is resident in the EU.

Note: Students fully funded by their employer or sponsor (excluding Student Finance England) are not eligible for this support.

2) The City of Liverpool College HE Progression Bursary

Full time student eligibility criteria:

- has a household income up to £30,000
- has progressed from a full level 3 qualification taken in college in the 2018/19 academic year
- is resident in the EU.

Part time student eligibility criteria:

- has a household income up to £30,000
- has progressed from a full level 3 qualification taken in college in the 2018/19 academic year
- is resident in the EU.

Note: Students fully funded by their employer or sponsor (excluding Student Finance England) are not eligible for this support.

Bursary Payments

The bursary is paid in three instalments based on students meeting on-course achievement targets and a 90% attendance criteria.

Full-time		Part-time	Date
1st Payment	£200	£100	November 2019
2nd Payment	£200	£100	February 2020
3rd Payment	£100	£50	June 2020

Note: All college HE bursaries are available for the first year of study only.

HE bursaries are paid from a limited funding source. College reserves the right to withdraw the offer of a bursary once available funding is allocated.

Students are eligible to access only one HE bursary.

College Hardship Fund

A small income-assessed HE hardship fund is available to offer support to students who are experiencing severe financial hardship.

Got a quick question about student fees, finance or funding for Higher Education?

Why not... **AskAnn@liv-coll.ac.uk**

Course Fees Information

Course fees stated in this prospectus are for each year of study.

Fees for the second or third year of a foundation/ honours degree level programme may be subject to adjustment, in line with inflation.

All Course Information and Application



COLCollege



@COLCollege



College Information: 0151 252 3000



www.liv-coll.ac.uk



@COLCollege



A woman with long brown hair, wearing a white polka-dot top, is pointing at a whiteboard with her right hand. She is holding a white marker in her left hand. The whiteboard has some handwritten notes in blue ink, including "21/1", "make", "time in", "eff", "9%", and "2015/10-". The background is a bright, sunlit room with large windows.

Useful Contacts:

EU Students:

www.direct.gov.uk/studentfinance-EU

Scholarship Search UK:

www.scholarship-search.org.uk

Student Finance England:

www.direct.gov.uk/studentfinance

Tax Credits:

www.inlandrevenue.gov.org

HE Course Listing

ART, DESIGN AND FASHION

	19
• Fashion and Textiles - Higher National Certificate	20
• Fashion - Higher National Diploma Top-Up	22
• Photography - Higher National Certificate	24
• Photography - Higher National Diploma Top-Up	26

COMPUTER SCIENCE AND DIGITAL

	29
• Computing - Higher National Certificate	30
• Computing – Higher National Diploma Top-Up	32
• Computing - BSc (Hons) Top-Up	34
• Creative Media Production (Game Development) - Higher National Certificate	36
• Creative Media Production (Game Development) - Higher National Diploma Top-Up	38
• Game Design - BA (Hons) Top-Up	40
• Games Design and Concept Art - BA (Hons)	42

CONSTRUCTION AND ENGINEERING

	45
• Construction and the Built Environment (Building Services - Electrical) - Higher National Cert.	46
• Construction and the Built Environment (Building Services - Heating, Ventilation & Air Conditioning) - Higher National Certificate	48
• Construction and the Built Environment (Civil Engineering) - Higher National Certificate	50
• Construction and the Built Environment (Construction) - Higher National Certificate	52
• Construction and the Built Environment (Surveying) - Higher National Certificate	54
• Electrical and Electronic Engineering - Higher National Certificate	56
• Engineering (Manufacturing) - Higher National Certificate	58
• Engineering (General) - Higher National Diploma Top-Up	60

HEALTH AND SOCIAL CARE

	61
• Dental Technology - Foundation Degree	64
• Dental Technology - BSc (Hons) Top-Up	66
• Early Years Practice - Foundation Degree	68
• Early Childhood Studies - BA (Hons) Top-Up	72
• Healthcare Practice - Higher National Certificate	74
• Healthcare Practice - Higher National Diploma Top-Up	76

HOSPITALITY, TOURISM AND SPORT

	81
• Hospitality Management - Higher National Certificate	80
• Hospitality Management - Higher National Diploma Top-Up	82
• Sport and Exercise Science - Higher National Certificate	84
• Sport and Exercise Science - Higher National Diploma Top-Up	86
• Sports Coaching - BA (Hons) Top-Up	88
• Tourism and Leisure or Tourism, Leisure and Hospitality - Foundation Degree	90

MATHEMATICS AND SCIENCE

- Applied Science: Biology - Higher National Certificate 93
- Applied Science: Biology - Higher National Diploma Top-Up 94
- Applied Science: Chemistry - Higher National Certificate 96
- Applied Science: Chemistry - Higher National Diploma Top-Up 98

MEDIA, MUSIC AND PERFORMING ARTS

- Music Production - Higher National Certificate 104
- Music Production - Higher National Diploma Top-Up 106
- Performing Arts (Acting) - Higher National Certificate 108
- Performing Arts (Acting) - Higher National Diploma Top-Up 112
- Performing Arts (Dance) - Higher National Certificate 116
- Performing Arts (Dance) - Higher National Diploma Top-Up 118
- Performing Arts (Musical Theatre) - Higher National Certificate 120
- Performing Arts (Musical Theatre) - Higher National Diploma Top-Up 122
- Performing Arts (Acting/Dance/Musical Theatre) - BA (Hons) Top-Up 124
- Popular Music - Foundation Degree 126
- Popular Music and Music Production - BA (Hons) Top-Up 130

SOCIAL SCIENCE AND BUSINESS

- Business - Higher National Certificate 133
- Business - Higher National Diploma Top-Up 134

TEACHER EDUCATION AND TRAINING

- Education and Professional Development - BA (Hons) 139
- Teacher Training Pre-Service (Lifelong Learning): 140
 - Certificate in Education 142
 - Professional Graduate Certificate in Education
 - Postgraduate Certificate in Education
 - Postgraduate Diploma in Education
- Teacher Training In-Service (Lifelong Learning): 144
 - Certificate in Education
 - Professional Graduate Certificate in Education - Postgraduate Certificate in Education
 - Postgraduate Diploma in Education

Art, Design and Fashion

The UK's creative industries are vital to the country's future economic growth, as well as to future job creation.

These sectors continue to outgrow the rest of the economy and contributed a record £92bn to the UK economy in 2016. Total employment in the creative sectors in the same year increased by 5% to 3.04bn jobs

Art, Design and Fashion

FASHION AND TEXTILES HIGHER NATIONAL CERTIFICATE

About this Course:

This HNC in Fashion and Textiles has a strong emphasis on developing practical skills alongside specialist knowledge and understanding to meet the needs of the sector. BTEC Higher Nationals are recognised by employers as providing learners with the key concepts and practical skills for direct progression to either Higher Education or employment within the fashion industry.

Learners will have the opportunity to master essential techniques for their chosen pathway and develop their higher level skills in fashion design.

Modules covered:

Semester 1

- Computer Aided Design (CAD)
- Contextual Studies
- Individual Project
- Techniques and Processes

Semester 2

- Professional Development
- Fashion & Textile Practices
- Pattern Cutting and Garment Making
- Fashion Collection

A fundamental aspect of the student's development is educational visits which enhance the course experience and underpin all assignments. Previous destinations have included Paris (Paris Photo), London and Dublin, giving students the opportunity not only add to their own portfolios but also to network with other photographers at an international level.

Guest lectures are also incorporated into the curriculum to enhance the student's understanding of professional practice and previous guest lectures have included acclaimed photographers, curators, marketing and PR representatives and specialist practitioners.

Entry Requirements

- Level 3 Extended Diploma in a relevant subject (MMM minimum) or 3 A-level qualifications in a relevant subject area
- GCSE English Language at grade C or above or equivalent

COURSE FACTS

Qualification obtained:
Higher National Certificate in Art and Design (Fashion and Textiles)

Awarding body:
Pearson

Course code:
CF998

UCAS code:
W231

Attendance mode:
Full time/part time

Duration:
1 year full time
2 years part time

Start date:
September 2019

End date:
June 2020 full time
June 2021 part time

Fees:
£6,313

Number of places:
16

Progression:
Second/third year degree level programme, or employment

How to apply:
Ucas: www.ucas.ac.uk (F/T)



- We also welcome applications from those with relevant experience in lieu of the minimum entry requirements.

All applicants are given the opportunity to attend one of our Open Event workshops and are interviewed face to face (interview questions and portfolio).

Applicants should hold a total UCAS Tariff points score from relevant qualifications of at least 96 points (see page 6 for full details).

Skills and Knowledge Developed:

This programme provides learners with an opportunity to master the essential skills of their chosen specialism and develop higher level skills to meet the skills shortages within the industry.

Learners will broaden their experience and depth of knowledge, allowing them to develop skills and attributes essential for a career in the industry.

Learners will gain a deep understanding of the relationship between the designer, maker, and final outcome. They will be equipped with the skills necessary to translate a design and creative ideas into a finished and wearable garment. Design ideas will be presented evocatively, through appropriate visual material and practical outcomes - both 2D and 3D - demonstrating a high aesthetic, skilful manufacture and a strong theoretical understanding.

Progression:

This programme produces graduates skilled in a broad range of specialist areas. Learners who achieve BTEC Level 4 HNC can progress to the BTEC level 5 HND specialism, and potentially progress to either a further degree programme or employment.

Special Features:

There will be opportunity for learners to attain a level of professional practice. Strong links to the creative industries will facilitate industry-related

briefs and real scenarios that provide an opportunity for students to acquire professional work ethics, time planning skills and working within a creative team. Learning is supported through a series of guest lectures and contextual visits, where students have the opportunity to visit galleries, museums and exhibitions and have discussions with professional practitioners for advice and guidance.

Educational trips also feature within the course and are an excellent opportunity for students to network with industry professionals.

Teaching Methods:

The knowledge and skills acquired on the programme link directly to the vocational context and will diversify into a range of practical and technical skills required by the specialist industries. These include (but are not exclusive to): creative and conceptual tailoring; fashion design; traditional and contemporary illustration; traditional and innovative garment production techniques; and business and enterprise competence.

Teaching and learning includes formal lectures which underpin the specialist subjects and technical style workshops with relevant historical and cultural references.

Practical units take place in the studio environment with tutor support and guidance, and independent learning sessions which are timetabled to allow access to specialist equipment and resources.

Assessment Methods:

The programme is assessed through a combination of written essays, research portfolios, image presentations and evaluations, which support the practical assessments throughout the course. Formative feedback supports student progression in both written and practical. Self and peer assessment in convener/critique situations is an essential element of all projects and the feedback from these will enhance student achievement and progression.

Art, Design and Fashion

FASHION

HIGHER NATIONAL DIPLOMA TOP-UP

About this Course:

The HND in Fashion builds on previous experience and has a strong emphasis on developing practical skills alongside specialist knowledge and understanding to meet the needs of the sector. BTEC Higher Nationals are recognised by employers as providing learners with the key concepts and practical skills for direct progression to either Higher Education or employment within the fashion industry.

Learners will have the opportunity to master essential techniques for their chosen pathway and develop higher level skills in fashion design. The programme is offered on both a part time and full time basis with the framework providing flexibility to develop and support continuous professional development opportunities.

Modules covered:

- Professional Practice
- Applied Practice Collaborative Project
- Advance Fashion Studies
- Branding & Identity
- Material Selection & Specification
- Trend Forecasting

A fundamental aspect of the student's development is educational visits which enhance the course experience and underpin all assignments. Previous destinations have included Paris (Paris Photo), London and Dublin, giving students the opportunity not only to add to their own portfolios but also to network with other photographers at an international level.

Guest lectures are also incorporated into the curriculum to enhance the student's understanding of professional practice and previous guest lectures have included acclaimed photographers, curators, marketing and PR representatives and specialist practitioners.

Entry Requirements

- Completed HNC in Fashion or equivalent Level 4 certificate of higher education
- GCSE English Language at grade C or above or equivalent
- We also welcome applications from those with relevant experience in lieu of the minimum entry requirements.

All applicants are given the opportunity to attend one of our Open Event workshops and are interviewed face to face (interview questions and portfolio).

COURSE FACTS

Qualification obtained:
Higher National Diploma in Art and Design (Fashion)

Awarding body:
Pearson

Course code:
CF351

UCAS code:
W232

Attendance mode:
Full time/part time

Duration:
1 year full time
2 years part time

Start date:
September 2019

End date:
June 2020 full time
June 2021 part time

Fees:
£6,129

Number of places:
16

Progression:
Second/third year degree level programme, or employment

How to apply:
Ucas: www.ucas.ac.uk (F/T)



Applicants should hold a total UCAS Tariff points score from relevant qualifications of at least 96 points (see page 6 for full details).

Skills and Knowledge Developed:

This programme provides learners with an opportunity to master the essential skills of their chosen specialism and develop higher level skills to meet the skills shortages within the industry.

Learners will broaden their experience and depth of knowledge, allowing them to develop skills and attributes essential for a career in the industry.

Learners will gain a deep understanding of the relationship between the designer, maker, and final outcome. They will be equipped with the skills necessary to translate a design and creative ideas into a finished and wearable garment. Design ideas will be presented evocatively, through appropriate visual material and practical outcomes - both 2D and 3D - demonstrating a high aesthetic, skilful manufacture and a strong theoretical understanding.

Progression:

This programme produces graduates skilled in a broad range of specialist areas. Learners who achieve BTEC Level 5 HND can potentially progress to either a further degree programme or employment.

Special Features:

There will be opportunity for learners to attain a level of professional practice. Strong links to the creative industries will facilitate industry-related briefs and real scenarios that provide an opportunity for students to acquire professional work ethics, time planning skills and working within a creative team. Learning is supported through a series of guest lectures and contextual visits, where students have the opportunity to visit galleries, museums and exhibitions and have discussions with professional practitioners for advice and guidance.

Educational trips also feature within the course and are an excellent opportunity for students to network with industry professionals.

Teaching Methods:

The knowledge and skills acquired on the programme link directly to the vocational context and will diversify into a range of practical and technical skills required by the specialist industries. These include (but are not exclusive to): creative and conceptual tailoring; fashion design; traditional and contemporary illustration; traditional and innovative garment production techniques; and business and enterprise competence.

Teaching and learning includes formal lectures which underpin the specialist subjects and technical style workshops with relevant historical and cultural references.

Practical units take place in the studio environment with tutor support and guidance, and independent learning sessions which are timetabled to allow access to specialist equipment and resources.

Assessment Methods:

The programme is assessed through a combination of written essays, research portfolios, image presentations and evaluations, which support the practical assessments throughout the course. Formative feedback supports student progression in both written and practical. Self and peer assessment in convener/critique situations is an essential element of all projects and the feedback from these will enhance student achievement and progression.

You'll work on live briefs based on realistic workplace situations, specifically designed to prepare you for your chosen profession.

Art, Design and Fashion

PHOTOGRAPHY HIGHER NATIONAL CERTIFICATE

About this Course:

The Photography HNC is a challenging and wide ranging course whose central aim is to introduce students into higher education and employment in the photographic industry.

Students will develop practical, academic and research skills alongside their exploration of image taking and image making. The broad variety of assignments will help students to discover which area of photography they are passionate about, and staff will offer the career guidance needed to pursue their passions professionally.

Modules covered:

Semester 1

- Lighting in Photography
- Darkroom Techniques
- Photographic Practices
- Communication in Art & Design.

Semester 2

- Professional Development
- Contextual Studies
- Individual Project
- Techniques & Processes.

A fundamental aspect of student's development is educational visits, which enhance the course experience and underpin all assignments. Previous destinations have included Paris (Paris Photo), London and Dublin, giving students the opportunity to not only add to their own portfolios but also to network with other photographers at an international level.

Guest lectures are also incorporated into the curriculum to enhance the student's understanding of professional practice and previous guest lectures included acclaimed photographers, curators, marketing and PR representatives and specialist practitioners.

Entry Requirements

- Level 3 Extended Diploma in a relevant subject (MMM minimum) or 3 A-level qualifications in a relevant subject area
- GCSE English Language at grade C or above or equivalent
- We also welcome applications from those with relevant experience in lieu of the minimum entry requirements.

COURSE FACTS

Qualification obtained:
Higher National Certificate in
Art and Design (Photography)

Awarding body:
Pearson

Course code:
CM999

UCAS code:
P356

Attendance mode:
1 year full time
2 years part time

Duration:
1 year

Start date:
September 2019

End date:
June 2020 full time
June 2021 part time

Fees:
£6,313

Number of places:
18

Progression:
Level 5 programme or
employment.

How to apply:
Ucas: www.ucas.ac.uk (F/T)



All applicants will be given the opportunity to attend one of our Open Event workshops. All applicants interviewed face to face (interview questions and portfolio).

Applicants should hold a total UCAS Tariff points score from relevant qualifications of at least 96 points (see page 6 for full details).

Skills and Knowledge Developed:

This programme develops a student's in-depth understanding of photography and the possibilities within the genre. Study is set with a vocational bias and skills and knowledge are developed through practical and theoretical sessions. This includes working in a photographic studio, creative lighting, working with a range of photographic mediums (film and digital), image manipulation and editing and working on location.

Alongside the many practical skills gained, students develop self-management, self-promotion and interpersonal skills, whilst improving reflective practice and evaluation skills. Students also gain a number of transferable skills over the course of the qualification in areas such as problem solving, numeracy, IT and communication.

Progression:

This programme produces graduates skilled in a broad range of specialist areas. Progression is through direct entry into the industry or through further study at HND level or degree level.

Special Features:

There will be opportunity for the learners to attain a level of professional practice. Strong links to the Creative Industries will facilitate industry-related briefs and real scenarios that provide an opportunity for students to acquire professional work ethics, time planning skills and working within a creative team.

Learning is supported through a series of guest lectures and contextual visits, where students will have the opportunity to visit galleries, museums and exhibitions and have discussions with professional practitioners for advice and guidance.

Educational trips also feature within the course and are an excellent opportunity for students to network with photography professionals and add to their portfolio.

Teaching Methods:

The knowledge and skills acquired on the programme link directly to the vocational context and diversify into a range of skills required within photography. Teaching and Learning methods include formal lectures and seminars, which underpin practical workshop sessions with relevant industry, historical and cultural reference.

Practical modules take place in specialist rooms with tutor support and guidance and extra independent learning sessions, supported wherever possible.

Assessment Methods:

The programme is assessed through a combination of written essays, research portfolios, image presentations and evaluations, which will support the practical assessments throughout the course.

Formative feedback will support student progression in both the written and practical.

Self and peer assessment in convener/critique situations is an essential element of all projects and feedback from these will enhance student achievement and progression.

Art, Design and Fashion

PHOTOGRAPHY

HIGHER NATIONAL DIPLOMA TOP-UP

About this Course:

This Photography HND will build on previous experience and is a challenging and wide ranging course whose central aim is to introduce students into higher education and employment in the photographic industry.

Students will develop practical, academic and research skills alongside their exploration of image taking and image making. The broad variety of assignments will help students to discover which area of photography they are passionate about, and staff will offer the career guidance needed to pursue their passions professionally.

Modules covered:

- Professional Practice
- Advanced Photography Studies
- Moving Image
- Art Direction
- Conceptual Art
- Applied Practice Collaborative Project.

A fundamental aspect of a student's development is educational visits, which enhance the course experience and underpin all assignments. Previous destinations have included Paris (Paris Photo), London and Dublin, giving students the opportunity to not only add to their own portfolios but also to network with other photographers at an international level.

Guest lectures are also incorporated into the curriculum to enhance the student's understanding of professional practice and previous guest lectures have included acclaimed photographers, curators, marketing and PR representatives and specialist practitioners.

Entry Requirements

- Completed HNC in Photography or equivalent Level 4 certificate of higher education
- GCSE English Language at grade C or above or equivalent
- We also welcome applications from those with relevant experience in lieu of the minimum entry requirements.

COURSE FACTS

Qualification obtained:
Higher National Diploma in
Art and Design (Photography)

Awarding body:
Pearson

Course code:
CF501

UCAS code:
P357

Attendance mode:
Full-time/part time

Duration:
1 year full time
2 years part time

Start date:
September 2019

End date:
June 2020 full time
June 2021 part time

Fees:
£6,129

Number of places:
18

Progression:
Degree level programme or
employment

How to apply:
Ucas: www.ucas.ac.uk (F/T)



All applicants will be given the opportunity to attend one of our Open Event workshops. All applicants interviewed face to face (interview questions and portfolio).

Applicants should hold a total UCAS Tariff points score from relevant qualifications of at least 96 points (see page 6 for full details).

Skills and Knowledge Developed:

This programme develops the student's in-depth understanding of photography and the possibilities within the genre. Study is set with a vocational bias and skills and knowledge are developed through practical and theoretical sessions. This includes working in a photographic studio, creative lighting, working with a range of photographic mediums (film and digital), image manipulation and editing and working on location.

Alongside the many practical skills gained, students develop self-management, self-promotion and interpersonal skills, whilst improving their reflective practice and evaluation skills. You will also gain a number of transferable skills over the course of the qualification in areas such as problem solving, numeracy, IT and communication.

Progression:

This programme produces graduates skilled in a broad range of specialist areas. Progression is through direct entry into the industry or through further study at graduate level.

Special Features:

There will be opportunity for learners to attain a level of professional practice. Strong links to the creative industries will facilitate industry-related briefs and real scenarios that provide an opportunity for students to acquire professional work ethics, time planning skills and working within a creative team.

Learning is supported through a series of guest lectures and contextual visits, where students will have the opportunity to visit galleries,

museums and exhibitions and have discussions with professional practitioners for advice and guidance.

Educational trips also feature within the course and are an excellent opportunity for students to network with photography professionals and add to their portfolio.

Teaching Methods:

The knowledge and skills acquired on the programme link directly to the vocational context and diversify into a range of skills required within photography. Teaching and Learning methods include formal lectures and seminars which underpin practical workshop sessions with relevant industry, historical and cultural reference.

Practical modules take place in specialist rooms with tutor support and guidance and extra independent learning sessions, supported wherever possible.

Assessment Methods:

The programme is assessed through a combination of written essays, research portfolios, image presentations and evaluations, which will support the practical assessments throughout the course.

Formative feedback will support student progression in both the written and practical.

Self and peer assessment in convener/critique situations is an essential element of all projects and feedback from these will enhance student achievement and progression.

**UK creative industries are growing
at four times the rate of the
UK's workforce.**



Computer Science and Digital

With increasing demand for application and games developers in today's digitally expanding world, a career in ICT computer science and digital will set students up for limitless job opportunities across the world. Our digital and ICT graduates can earn around £36,000 in today's market.

We have links with many companies within the digital sector, helping you to gain vital work experience and build up relationships with some of the top digital agencies.

Computer Science and Digital COMPUTING HIGHER NATIONAL CERTIFICATE

About this Course:

This HNC in Computing will develop students as professional, self-reflecting individuals able to meet both the demands of employers in the computing sector and adapt to a constantly changing world. The qualification aims to widen access to higher education and enhance the career prospects of those who undertake it.

The course provides students with a thorough grounding in computing principles at Level 4 that leads on to a range of specialist progression pathways at Level 5, relating to individual professions within the computing sector.

Entry Requirements:

- BTEC Level 3 qualification in Computing
- Other related Level 3 qualifications
- Related work experience.

Applicants should hold a total UCAS Tariff points score from relevant qualifications of at least 96 points (see page 6 for full details).

Skills and Knowledge Developed:

At Level 4, students develop a broad knowledge and awareness of key aspects of the computing sector through eight core units, which include one unit assessed by a Pearson-set assignment.

These units are:

- Programming
- Networking
- Professional Practice
- Database Design and Development
- Security
- Managing a Successful Computing Project (Pearson-set unit)
- Software Development Lifecycles
- Website Design and Development.

COURSE FACTS

Qualification obtained:
Higher National Certificate
in Computing

Awarding body:
Pearson

Course code:
CD405

UCAS code:
I199

Attendance mode:
Full time/part time

Duration:
1 year full time
2 years part time

Start date:
September 2019

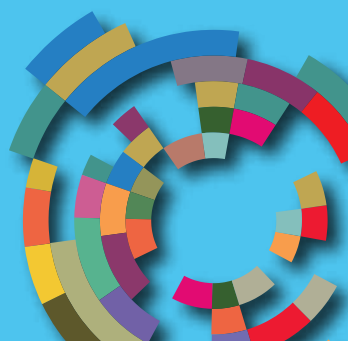
End date:
June 2020 full time
June 2021 part time

Fees:
£6,313

Number of places:
18

Progression:
Level 5 programme in
Computing, depending on
grades attained, or
employment

How to apply:
Ucas: www.ucas.ac.uk (F/T)



Progression:

This programme produces graduates skilled in a broad range of specialist areas. Progression is through direct entry into the industry, or through further study at HND or degree level.

Special Features:

We have designed the course delivery so that when possible we can include industry led courses such as CISCO and Oracle.

Teaching Methods:

Knowledge and understanding will be acquired through the following range of approaches to module delivery:

- work related and work-based learning
- mixed modes of delivery
- tutor-led learning (lectures, with student interaction/discussion, class exercises and group work, as appropriate to the topic)
- tutor-led workshops (practical sessions with student interaction)
- self-managed learning/research (outside timetabled sessions)
- VLE delivery and support (learning materials, exercises and reference documents are made available as well as means of communication between students, tutors and support staff)
- IT and software available on campus as learning tools
- Self-directed learning using programming material via the VLE
- Mentoring sessions (one-to-one with the tutor)
- learning logs (in paper or electronic form, e.g. blogs)
- supported learning and resources available via the LRC
- a learner support unit for students with particular educational needs.



Assessment Methods:

The programme is assessed through submission of written reports and practical solutions such as programming, database development and web applications.

Formative assessment is primarily developmental in nature and is designed to give feedback to students on their performance and progress, with support.

Summative assessment is given where students are provided with the assignment grades contributing towards the overall unit grade.

**87% employment in industry
six months after completing
the course**

Computer Science and Digital COMPUTING HIGHER NATIONAL DIPLOMA TOP-UP

About this Course:

This HND in Computing builds on previous experience and develops students as professional, self-respecting individuals, able to meet both the demands of employers in the computing sector and adapt to a constantly changing world. The qualification aims to widen access to higher education and enhance the career prospects of those who undertake it.

The course provides students with a thorough grounding in computing principles at Level 5 that leads on to a range of specialist progression pathways at Level 6, relating to individual professions within the computing sector.

Entry Requirements:

- Completed HNC in Computing or equivalent Level 4 certificate of higher education
- Related work experience.

Applicants should hold a total UCAS Tariff points score from relevant qualifications of at least 96 points (see page 6 for full details).

Skills and Knowledge Developed:

At Level 5, students develop a broad knowledge and awareness of key aspects of the computing sector through seven core units, which include one unit assessed by a Pearson-set assignment.

These units are:

- Computing Research Project (30 credit modules)
- Business Intelligence
- Advanced Programming
- Forensics
- Prototyping
- Games Development
- Emerging Technologies.

Holders of the Higher National Diploma Level 5 will have developed a sound understanding of the principles in their field of study (Computing) and will have learned to apply those principles more widely.

COURSE FACTS

Qualification obtained:
Higher National Diploma
in Computing

Awarding body:
Pearson

Course code:
CD504

UCAS code:
I200

Attendance mode:
Full time/part time

Duration:
1 year full time
2 years part time

Start date:
September 2019

End date:
June 2020 full time
June 2021 part time

Fees:
£6,129

Number of places:
18

Progression:
Third year Top-Up programme
in Computing, depending on
grades attained, or
employment

How to apply:
Ucas: www.ucas.ac.uk (F/T)



Students will have learned to evaluate the appropriateness of different approaches to solving problems. They will be able to perform effectively in their chosen field and will have the qualities necessary for employment in situations requiring the exercise of personal responsibility and decision-making.

Progression:

On successful completion of the Higher National Diploma Level 5, students can develop their careers in the computing sector through:

- entering employment
- continuing existing employment
- linking with the appropriate vendor accredited certificates
- committing to Continuing Professional Development (CPD).

Students can also stay at the College and progress onto the Level 6 BSc (Hons) Computing Top-Up Degree through the Open University.

Special Features:

We have designed the course delivery so that when possible we can include industry led courses such as CISCO and Oracle.



Teaching Methods:

- work related and work-based learning
- mixed modes of delivery
- tutor-led learning (lectures, with student interaction/discussion, class exercises and group work, as appropriate to the topic)
- tutor-led workshops (practical sessions with student interaction)
- self-managed learning/research (outside timetabled sessions)
- VLE delivery and support (learning materials, exercises and reference documents are made available, as well as means of communication between students, tutors and support staff)
- IT and software available on campus as learning tools
- self-directed learning using programming material via the VLE
- mentoring sessions (one-to-one with the tutor)
- learning logs (in paper or electronic form, e.g. blogs)
- supported learning and resources available via the LRC
- a learner support unit for students with particular educational needs.

Assessment Methods:

The programme is assessed through submission of written reports and practical solutions such as programming, database development and web applications.

Formative assessment is primarily developmental in nature and is designed to give feedback to students on their performance and progress, with support.

Summative assessment is given where students are provided with the assignment grades contributing towards the overall unit grade.

The programme allows 120 credits..

Computer Science and Digital

COMPUTING BSc (HONS) TOP-UP

About this Course:

This programme provides students with the opportunity to study a BSc Top-Up, that covers the core areas of computing and information technology of networking and security, advanced database development and advanced web development.

The curriculum is designed to provide a structured and cohesive focus on the core areas, along with the advanced aspects of how the different areas integrate to create systems using current technologies. Additional options also allow students to tailor the BSc Top-Up to their own interests and chosen career path.

The programme will enhance vocationally relevant professional skills through specific modules, activities within certain modules and the generic opportunity to undertake applied study. Technical and academic skills are embedded in the modules allowing students to emerge from the programme with an updated skill set that can either be used to market themselves with employers or take the opportunity to move into further study, should they wish to.

Entry Requirements:

- HND or foundation degree in a computing subject from a UK university or, if obtained elsewhere, one that is recognised in the NARIC database or
- Level 5 HND Diploma in Computing and Systems Development (2010 QCF) or
- British Computer Society (BCS) Diploma in IT (level 5) - including completion of the professional project.

Applicants should hold a total UCAS Tariff points score from relevant qualifications of at least 96 points (see page 6 for full details).

Skills and Knowledge Developed:

- At Level 6, students develop a broad knowledge and awareness of key aspects of the computing sector through four 20 credit units and a 40 credit dissertation.

These units are:

- Advanced Database Development
- Advanced Web Development
- IT Security Management
- Network Management and Security
- Dissertation.

COURSE FACTS

Qualification obtained:
BSc Honours Degree in Computing

Awarding body:
The Open University

Course code:
CD401

UCAS code:
I122

Attendance mode:
Full time/part time

Duration:
1 year full time
2 years part time

Start date:
September 2019

End date:
June 2020 full time
June 2021 part time

Fees:
Full-time £7,957
Part-time £3,979

Number of places:
20

Progression:
Post graduate study or employment

How to apply:
College: www.liv-coll.ac.uk (P/T)
Ucas: www.ucas.ac.uk (F/T)



Progression:

This programme develops graduates skilled in a broad range of specialist areas. Progression is through direct entry into the industry or through further study at post graduate level.

Special Features:

Within the programme there will be opportunity for learners to attain a level of professional practice. Strong links to the industries will facilitate industry-related briefs and real scenarios that provide an opportunity for students to acquire professional work ethics, time planning skills and working within a team.

Teaching Methods:

Modules are typically assessed through one or more coursework assignments. Depending on the nature of a given coursework assignment, students may be given the assignment specification at the beginning of the module for hand-in at the end of the module, or it may be given later in the module to complete before a set deadline. Normally, students receive feedback on coursework within three weeks of submission or completion. Modules also provide ample opportunities for formative feedback to guide you in your learning.

A common approach is for activities to be set based on the content of an online unit and then provide you with the opportunity to discuss this work in online discussions. The feedback may be in groups or individually.

Another common approach is for students to demonstrate progress on the development of their IT product to the tutor or to the group and receive guidance on the design approach taken, and also on the more technical aspects of the implementation.

Coursework assignments may involve essays, reports, projects, software development, answering questions, or various combinations of these submitted as a portfolio of work. Coursework assignments may be individual or collaborative (i.e. involve group work). Some may be based entirely on material covered in online units or others may require independent research.

Assessment Methods:

The assessment strategy for students undertaking the Level 6 (Top-Up) programme online also takes into account the different learning needs of online students. The following principles also inform our approach:

- to include a range of assessment types, with these being viewed holistically, within and across a programme structure
- to ensure that at the very beginning of a module students are made clearly aware of the specific, assessed activities or online participation that will be required and of the assessment criteria involved
- to ensure that sufficient time is allowed within modules where there are multiple assessment types for students to grasp the different approaches to assessment. Assessments for all modules have been designed to be inclusive for all students.



Computer Science and Digital

CREATIVE MEDIA PRODUCTION (GAME DEVELOPMENT) HIGHER NATIONAL CERTIFICATE

About this Course:

This HNC in Game Development focuses primarily on developing students' understanding of the creative media industries, the professional practices relevant to the field of games development, games in context and general aspects of game design workflows as well as the technical and creative processes that go into making games. During this fast paced year students learn about themselves by undertaking and managing an individual project. Other units are taught including the principles of 2D and 3D animation, 3D modelling and also art development skills.

Students are introduced to a wide variety of industry-standard software via tutor-led workshops, lectures, and seminars and will develop critical thinking skills in group critiques and presentations. Alongside this, all students are directed to set up and maintain detailed coursework unit development blogs; skills in written English are therefore crucial to be successful. They are also encouraged to get involved in UE4 Game Jam events, as well as other competitions outside of studio time. These experiences will develop intrapersonal skills, group work, collaboration and entrepreneurial skills, as well as being fun and challenging.

In summary, this qualification provides a thorough grounding on which to build should students wish to further their studies at Higher National Diploma Top-Up and possibly progress to the BA (Hons) Top-Up Degree in Games Design offered at the College.

Here at the College we offer students a challenging academic environment that is focused on developing skills based on the current industry practices.

- High specification Dual Screen i7 PC's, 1080 Graphics cards, 32 GB RAM
- A full suite of Cintiq 27inch UHD Interactive Pen Displays
- Course designed and developed focusing on the current industry (working) pipelines. Maya, ZBrush, Substance suite, Adobe CC suite
- Predominantly practical, computer-based delivery of modules
- A highly focused course for an exciting, dynamic and ever growing industry.

COURSE FACTS

Qualification obtained:
Higher National Certificate in
Creative Media Production
(Game Development)

Awarding body:
Pearson

Course code:
CD402

UCAS code:
2W83

Attendance mode:
Full time/part time

Duration:
1 year full time
2 years part time

Start date:
September 2019

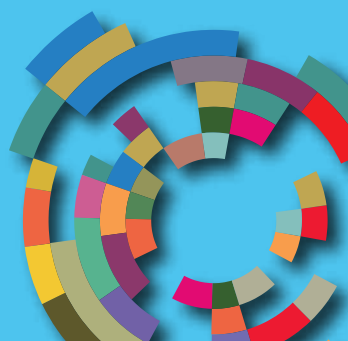
End date:
June 2020 full time
June 2021 part time

Fees:
£6,313

Number of places:
18

Progression:
Level 5 HND or employment

How to apply:
Ucas: www.ucas.ac.uk (F/T)



Entry Requirements:

A BTEC Extended Diploma at MMM or higher.
UAL Extended Diploma at M Grade, or
equivalent A-levels.

We also welcome applications from those with relevant experience in lieu of the minimum entry requirements.

All applicants will be given the opportunity to attend one of our interview workshops. Alternatively, if you are unable to attend, we will view your work online. Telephone based interviews can also be arranged, if required.

Applicants should hold a total UCAS Tariff points score from relevant qualifications of at least 96 points (see page 6 for full details).

Skills and Knowledge Developed:

This course aims to equip students with the creative and technical skills, experience and expertise to challenge for studio positions in a competitive market, or to consider options for their own start-ups locally. Industry standard software and skills will be taught throughout the course with a strong emphasis on 'live' projects, national competitions, freelance skills and collaboration.

Progression:

The course is designed to equip students with the skills to apply for junior roles in the industry. Successful students may wish to progress to our HND Top Up year, with a view to continuing onto our BA Top Up in Game Design and Concept Art, or to university for the final years of a degree programme. Freelance work or working for agencies online is another route to employment/income graduates from this programme could follow.

Special Features:

Within the scheme, there will be opportunity for the learners to attain a level of professional practice by liaising with and collaborating with local industry. Strong links to the creative

industries will facilitate industry-related briefs and real scenarios that provide an opportunity for students to acquire professional work ethics, time planning skills and working within a design team. Learning is supported through a series of contextual visits in London and Paris, Barcelona or Berlin (TBC).

Teaching Methods:

The knowledge and skills acquired on the programme will link directly to the vocational context and will diversify into a range of skills required by the game industries, both local and national. These will include skills in Maya, UE4, ZBrush, Substance Painter/Designer and Adobe Photoshop.

Teaching and Learning methods will include formal lectures and seminars, which will underpin the creative and technical practical workshop style sessions with relevant historical and cultural references.

Practical modules will take place in the studio environment with tutor support and guidance, and extra independent learning sessions will be timetabled to allow access to the specialist equipment and resources. Alongside this, students will have 24 hour access to an extensive and comprehensive set of VLE resources via My College, the student intranet site, throughout the course.

Assessment Methods:

The programme is assessed through the submission of written essays, blogging, design reports and the maintenance of digital work for a series of project-based practical assessments, assessment of studio practice, a final project and the submission of a relevant mini dissertation practice.

Formative feedback will support student progression in both written work and practical studies, to include the creative design process leading to technical design solutions. Self, peer and group assessment in critique situations will be an essential element of all projects and the feedback from these will enhance student achievement and progression.

The programme allows 120 credits at level 4.

Computer Science and Digital

CREATIVE MEDIA PRODUCTION (GAME DEVELOPMENT) HIGHER NATIONAL DIPLOMA TOP-UP

About this Course:

The Higher National Diploma is a top up year created to give HNC students the opportunity to study further at Level 5. This year focuses on building and developing students' ability to carry out work at close to degree level. Students are exposed to projects that demand higher levels of analysis and response and are encouraged to collaborate with other HE students and courses as part of their studies.

The HND widens the students understanding of the context within which games can operate, function and thrive. Students will learn about coding via units in, Scripting for Games, Advanced Game Development Studies, Advanced Rendering and Visualisation, Advanced Animation and Emerging Technologies as part of their studies. These studies will enhance personal professional development, giving students the opportunity to leave the course with a high quality digital portfolio and a strong set of employable skills.

Entry Requirements:

- Completed HNC in Game Development or equivalent Level 4 certificate of higher education

We welcome applications from those with relevant experience in lieu of the minimum entry requirements. All applicants will be given the opportunity to attend one of our interview workshops. Alternatively, if you are unable to attend, we will view your work online. Telephone based interviews can also be arranged, if required.

Applicants should hold a total UCAS Tariff points score from relevant qualifications of at least 96 points (see page 6 for full details).

Skills and Knowledge Developed:

This course gives students a choice of 'fast tracking' into a career in Level Design with a view to applying for a top-up degree qualification following completion of the course. This course aims to equip students with the creative and technical skills, experience and expertise to challenge for studio positions in a competitive market. Industry standard software and skills will be taught throughout the course with a strong emphasis on 'live' projects, national competitions, freelance skills, game jam events and collaborations with local industry.

COURSE FACTS

Qualification obtained:
Higher National Diploma in
Creative Media Production
(Game Development)

Awarding body:
Pearson

Course code:
CD502

UCAS code:
2W84

Attendance mode:
Full time/part time

Duration:
1 year full time
2 years part time

Start date:
September 2019

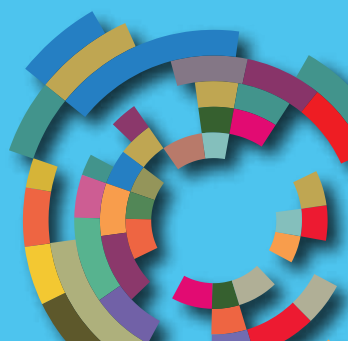
End date:
June 2020 full time
June 2021 part time

Fees:
£6,313

Number of places:
16

Progression:
Degree level programme or
employment

How to apply:
Ucas: www.ucas.ac.uk



Progression:

The course is designed to equip students with the skills to apply for level design jobs in the industry.

Successful students from this programme can also apply to either the second or final year of a degree, depending on the university applied to, but are also guaranteed access to our own (single year) BA Top Up Degree in Games Design. Freelance work or also working for agencies online is another route to employment/income graduates from this programme could follow.

Special Features:

Within the scheme there will be opportunity for learners to attain a level of professional practice by liaising with and collaborating with local industry. Strong links to the creative industries will facilitate industry-related briefs and real scenarios that provide an opportunity for students to acquire professional work ethics, time planning skills and working within a design team. Learning is supported through a series of contextual visits in London and Paris, Barcelona or Berlin (TBC).

Teaching Methods:

The knowledge and skills acquired on the programme will link directly to the vocational context and will diversify into a range of skills required by the game industries both local and national. These will include skills in Maya, UE4, ZBrush, Substance Painter/Designer and Adobe Photoshop.

Teaching and Learning methods will include formal lectures and seminars, which underpin the creative and technical practical workshop style sessions with relevant historical and cultural references.

Practical modules will take place in the studio environment with tutor support and guidance, and extra independent learning sessions will be timetabled to allow access to the specialist equipment and resources. Alongside this, students will have 24 hour access to an extensive and comprehensive set of VLE resources via My College, the student intranet site, throughout the course.

Assessment Methods:

The programme is assessed through the submission of written essays, blogging, design reports and the maintenance of digital work for a series of project-based practical assessments, assessment of studio practice, a final project and the submission of a relevant mini dissertation practice.

Formative feedback will support student progression in both written work and practical studies to include the creative design process, leading to technical design solutions. Self, peer and group assessment in critique situations will be an essential element of all projects and the feedback from these will enhance student achievement and progression.

The programme allows 120 credits at level 5.



Microsoft Academy: The world's first "Microsoft Associate College", demonstrating innovation through partnership with industry

Computer Science and Digital

GAME DESIGN BA (HONS) TOP-UP

About this Course:

This is a one-year top-up from the HND Game Development, utilising a range of specialist modules. Contextual and critical studies will inform and underpin the students' design development and design principles. Professional modules will enable them to develop time management and organisational skills in game/level creation. Level 6 is focused on skills and portfolio creation to prepare students for either employment or self-employment.

The early stages of the programme will embed advanced 3D modelling, level design, particle effects, in game interaction and analytical skills into the delivery strategy, with theoretical exploration underpinning all technical elements, preparing students for the self-directed final project. As it is anticipated that a large proportion of graduating students will obtain work in the freelance or self-employment areas, there is a strong emphasis on supporting business and professional skills through the entrepreneur society. Students will gain first-hand experience of what it takes to design successful game content and graduate with a portfolio demonstrating technical skill and creative talent.

The aim of this award is to produce graduates who have the specific skills to work in the games industry as Computer Games designers (orientating around 3D Modellers and Level Designers). The skills gained will allow students to work in an environment ranging from creating 3D models to creating industry-standard game/level designs and documentation.

Entry Requirements:

- GCSE English Language at grade C or above, or equivalent
- HND Game Design or equivalent
- Portfolio of work.

We also welcome applications from those with relevant experience in lieu of the minimum entry requirements.

All applicants will be given the opportunity to attend an interview. Alternatively, if you are unable to attend or are overseas, we will view your work online.

Applicants should hold a total UCAS Tariff points score from relevant qualifications of at least 96 points (see page 6 for full details).

COURSE FACTS

Qualification obtained:
BA Honours Degree in
Game Design

Awarding body:
The Open University

Course code:
CD403

UCAS code:
I162

Attendance mode:
Full time/part time

Duration:
1 year full time
2 years part time

Start date:
September 2019

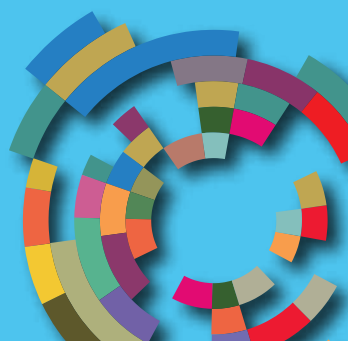
End date:
June 2020 full time
June 2021 part time

Fees:
£7,957

Number of places:
18

Progression:
MA Game Design or
employment

How to apply:
Ucas: www.ucas.ac.uk



Skills and Knowledge Developed:

The programme covers games design, level design, platforms and technologies, content production, testing, usability and playability, and games production. It provides a broad study of games, with an emphasis on innovation, design and creativity rather than the programming and technical aspects.

The focus is employment and marketplace-driven projects, with attendance at regular critique sessions with peers and members of the games team. In addition, our staff include industry experts who know exactly what is required for a career in games design.

A key feature of the programme is work experience and work-related learning, to ensure our students are adequately prepared for employment. Although work experience is integral to the course, a dedicated work placement module has not been allocated, as it is impractical to suggest that all students will be able to secure work placements at the same time, and for the same number of hours during the year. Alternatively, students will have the opportunity to integrate their work experience with any of the modules during the first, second and third year, and for this reason the assignment briefs connected to each module will be open to interpretation and are not prescriptive. This will also enable the student to pursue a more creative outcome of their choice, whilst not being limited by prescriptive parameters of an assignment brief.

The course will equip individuals with knowledge, understanding and skills for success in a range of 3D modelling and level design, as well as providing opportunities for learners to develop a range of skills, techniques and attributes essential for successful performance in working life - whether working with AAA titles or through small indie development teams within Liverpool.

Progression:

This programme produces graduates skilled in a broad range of specialist areas and progression is through direct entry into the industry or through further study at post graduate level.

Special Features:

Throughout the year, there is opportunity for learners to attain a level of professional practice, with strong links to the games industries and the ability to release their own assets through Steam and Unreal Engine marketplace. The Game Design degree programme will facilitate industry-related briefs and real scenarios that provide an opportunity for students to acquire professional work ethics, time planning skills and working within a creative environment. Learning is supported through a series of contextual modules as well as trips - including London, Paris Games Week and the Eurogamer Expo.

Our facilities include dedicated games rooms including i7 PCs installed with current games development environments, state-of-the-art 3D graphics cards, Unreal Engine 4, Autodesk Maya, ensuring you have access to the tools needed to create a high quality portfolio of work ready to impress potential employers.

Teaching Methods:

The knowledge and skills acquired on the programme link directly to the vocational context and will diversify into a range of skills required by the gaming industries. These include (but are not exclusive to) 3D modelling and level design, particle effects, game production and business/enterprise competence.

Teaching and Learning methods include formal lectures and seminars which underpin the creative and technical practical workshop-style sessions with relevant historical and cultural reference.

Practical modules take place in the studio environment with tutor support and guidance, and extra independent learning sessions are timetabled to allow access to the specialist equipment and resources. The course also incorporates a blended learning style with the use of the 'Virtual Learning Environment' and digital resources.

Assessment Methods:

Assessment of progress is through the practical activities, activity write-ups, coursework/ research reports and project reports and presentations.

Computer Science and Digital

GAME DESIGN AND CONCEPT ART BA (HONS)

About this Course:

The BA (Hons) in Game Design and Concept Art (subject to validation) offers a discreet dual pathway of specialist modules that aim to develop skills for students wishing to specialise in games design and concept art. The intention and ethos is to mirror industry set-ups and to foster teamwork between these two major disciplines in the field, whilst also developing high levels of creative and technical skills.

Each year is split into two 15-week semesters:

Year 1:

(Sept - Jan) A choice of modules which enable students to choose a pathway into game design or concept art. These modules cover either concept art theory in full character sculpting (Head) using ZBrush 4R7, or 3D Modelling using Maya 2018 for those more interested in game design.

(Jan - June) Game and character design fundamentals using ZBrush/Maya/UE4, Model texturing using Substance Designer/Painter and finally game and character animation techniques.

Year 2:

Development of research, creative and artistic prowess, teamwork abilities and analytical skills.

Introduction to Human Computer Interface (HCI) design, animation and coding utilising Photoshop, UE4 and other required software.

Students are taught the basics of Blueprinting (Unreal Engine's scripting language) to create interactivity. Next, modules in more advanced character sculpting (full body) and advanced texturing for games and characters take students' creations into the next level of realism and higher definition. The choice of a subject specialism module followed by advanced modules in both game and character-based concepts and character rigging. Students will also develop skills in Mocap (motion capture) for animation.

Year 3:

- The development of Advanced HCI
- Dissertation module
- Advanced 3D Modelling and also Game and Character Animation with gameplay functionality
- The final module is student driven and takes the form of a Final Major Project.

COURSE FACTS

Qualification obtained:

BA Honours Degree in Game Design and Concept Art

Awarding body:

The Open University

Course code:

CD406

UCAS code:

WW22

Attendance mode:

Full-time

Duration:

3 Years

Start date:

September 2019

End date:

June 2022

Fees:

£7,957

Number of places:

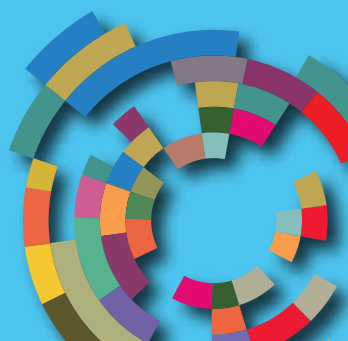
18

Progression:

MA Game Art, Graphics, Illustration, or employment

How to apply:

Ucas: www.ucas.ac.uk



Entry Requirements:

- MMM grade profile (96 UCAS Tariff points)
- Relevant A-levels or equivalent qualifications (BTEC/UAL Level 3 Extended Diploma) in subjects including Media, Games, Art & Design or another appropriate discipline
- GCSE English Language at grade 4/C or above or equivalent
- GCSE Maths at grade 4/C or above or equivalent (preferable).

Portfolio of current work required at interview.

Please note: Strong drawing skills are required for the concept art modules. We also welcome applications from those with relevant experience in lieu of the minimum entry requirements.

All applicants will be given the opportunity to attend an interview. Alternatively, if you are unable to attend interview or are overseas, we can/will view your work online.

Applicants should hold a total UCAS Tariff points score from relevant qualifications of at least 96 points (see page 6 for full details).

Skills and Knowledge Developed:

The programme covers game design and development, both environmental and character-based concept art and design, digital illustration, animation, 3D sculpting, life drawing, live briefs, texturing, and games production. It provides a broad study of games design, concept art and illustration, with an emphasis on innovation, design and creativity rather than the programming and technical aspects.

You will gain first-hand experience of what it takes to plan, design and build interactive game environments and character concepts and will graduate with a portfolio demonstrating your technical skill and creative talent.

Our facilities include dedicated studios, including a standalone suite of state-of-the-art Wacom Cintiq 27QHD - 27 Inch Creative Pen

Displays, powered by High End Alienware i7 PC workstations accompanied by a large drawing space for group work and sketchbook study. You will also have access to life drawing sessions and a life model at certain points in the course. Alongside this we have various study clusters offering Dual Screen i7 Alienware PCs installed with current games development environments, state-of-the-art 3D graphics cards, Unreal Engine 4, Autodesk Maya 2018, Autodesk's Sketchbook Pro, ZBrush 4R8, Substance Painter-Designer and Adobe CC 2018 suite; ensuring you have access to the tools you need to create a high quality portfolio of work ready to impress potential employers.

Progression:

This programme produces graduates skilled in a broad range of specialist areas. Progression is through direct entry into the industry or through further study at postgraduate level.

Special Features:

Throughout the course, there will be opportunity for students to attain a level of professional practice, with strong links to the games industries and the ability to release their own assets through the Steam and Unreal Engine marketplace. The BA (Hons) in Games Design and Concept Art programme will facilitate industry-related briefs and real scenarios that provide an opportunity for students to acquire professional work ethics, time management/planning skills and working within a creative environment. Learning is supported through a series of contextual modules as well as trips, including London, Paris Games Week and the Eurogamer Expo.

A key feature of the programme is work experience and work-related learning to ensure our students are adequately prepared for employment. Students will have the opportunity to integrate their work experience with any of the modules during the first, second and third year, and for this reason the assignment briefs connected to each module will be open to interpretation and not prescriptive. This will also enable the student to pursue a more creative outcome of their choice, whilst not being limited by prescriptive parameters of an assignment brief.



A strong emphasis on supporting business and professional skills through the entrepreneur society. We have strong links with successful games development companies in Liverpool who will set 'Live' briefs to give students first-hand experience of professional level working practices. Visits to SMEs locally at certain stages of the course as well as visiting lecturers will also develop work experiences. The main focus is employment and marketplace-driven projects, with regular critique sessions with your peers and members of the games team. In addition, our teaching team includes industry experts who know exactly what is required for a career in games and concept art industries.

Teaching Methods:

Teaching and learning methods will include formal lectures, demonstrations and seminars, which will underpin the creative and technical practical workshop style sessions with relevant historical and cultural reference. Practical modules will take place in the studio environment with tutor support and guidance and extra independent learning sessions will be timetabled to allow access to the specialist equipment and resources. The course also incorporates a blended learning style with the use of the 'Virtual Learning Environment' complete with all required digital resources.

Assessment Methods:

The programme is assessed through the submission of written essays, reports, critical evaluations; development blogs, which underpin a series of project-based practical assessments; a final major project; and the submission of a dissertation. Formative feedback will support student progression in both written work and technical outcomes. Self and peer assessment in critique situations will be an essential element of all projects and the feedback from these will enhance student achievement and progression.

The programme allows 120 credits comprising of 6 modules per year for the first two years and 5 modules in the final year.

Digital, culture, media and sports sectors contribute £250bn to the UK economy.

Construction and Engineering

Liverpool is well known as a hub for careers within the construction and engineering industries. It's a city that has seen many facelifts and regeneration projects that have kept the city financially, structurally and economically ahead.

We have incredible links with key businesses in the construction and engineering industry, both nationally and across the North West, ensuring that our graduates have the opportunity to work on the latest engineering projects and build up and maintain a network of professional contacts that will help them gain valuable insight and experience of their chosen career.

Construction and Engineering

CONSTRUCTION AND THE BUILT ENVIRONMENT (BUILDING SERVICES ELECTRICAL) HIGHER NATIONAL CERTIFICATE (PART TIME)

About this Course:

The purpose of BTEC Higher Nationals in Construction (Building Services - Electrical) is to develop students as professional, self-reflecting individuals able to meet the demands of employers in the construction and the built environment sector and adapt to a constantly changing world. The qualification aims to widen access to higher education and enhance the career prospects of those who undertake them.

- Individual Project
- Construction Technology
- Construction Practice & Management
- Mathematics for Construction
- Principles of Electrical Design & Installation
- Principles of Alternative Energy
- Scientific Principles for Building Services
- Principles of Refurbishment

Entry Requirements:

The standard entry requirements are:

- Level 3 BTEC National Certificate/Diploma in Construction and the Built Environment (Building Services Engineering).
- More mature learners with relevant Building Services experience and an advanced qualification such as an NVQ, BTEC Level 3 Subsidiary Diploma in Construction or equivalent - may be eligible. In addition, mature students with level 4 or above in other relevant areas may be eligible, subject to interview. All students are expected to have maths qualifications at level 2 or above.

Applicants should hold a total UCAS Tariff points score from relevant qualifications of at least 96 points (see page 6 for full details).

COURSE FACTS

Qualification obtained:
Higher National Certificate in Construction and the Built Environment (Building Services Electrical)

Awarding body:
Pearson

Course code:
TC401

UCAS code:
N/A

Attendance mode:
Part-time day-release

Duration:
2 Years

Start date:
September 2019

End date:
June 2021

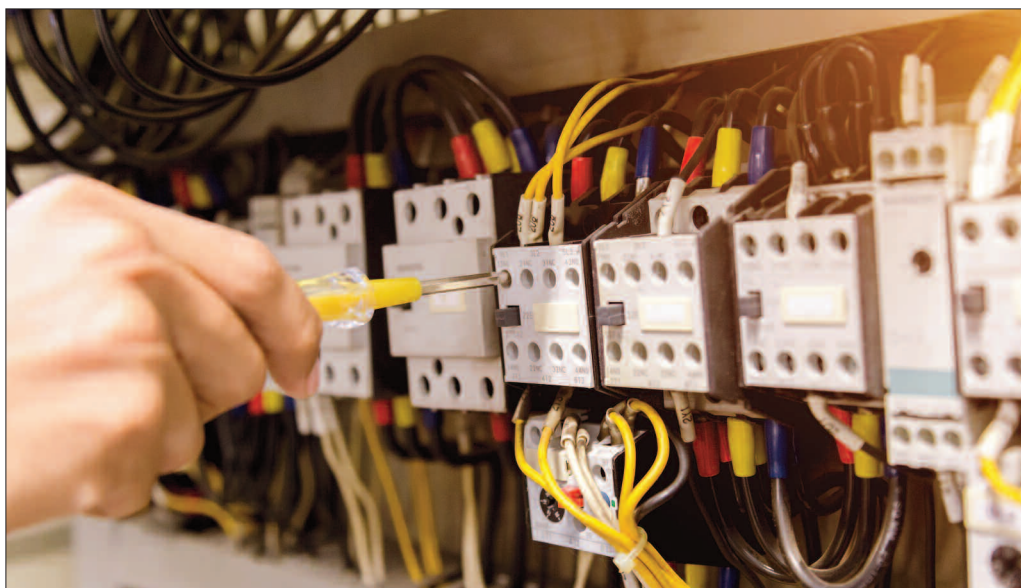
Fees:
£3,500

Number of places:
18

Progression:
Degree-level programme

How to apply:
College: www.liv-coll.ac.uk





Skills and Knowledge Developed:

This Level 4 Higher National Certificate in Construction and The Built Environment (Building Services - Electrical) offers students a broad introduction to the subject area via a mandatory core of learning, as well as units within general 'pathways', whilst allowing for the acquisition of skills and experience through the selection of a further (Level 4) unit across a range of occupational sectors. This effectively builds underpinning core skills, with general specialisation; preparing the student for further specialisation at Level 5. Students will gain a wide range of sector knowledge tied to practical skills gained in research, self-study, directed study and workplace scenarios.

Progression:

Completion of this course provides a number of options in both education and employment and sets students on their way to becoming a professional within the Built Environment.

In education, the course prepares students for a Level 5 qualification within the Construction and the Built Environment sector, bringing their professional and academic knowledge up to the required level.

Teaching Methods:

The course is delivered through a blend of lectures, seminars, tutorials, independent study and industry guest speakers.

Assessment Methods:

The course is assessed through a blend of assignments, presentations, practical tasks and job knowledge tasks. Each subject is awarded a Pass, Merit or Distinction and the combined marks produce the final overall grade of Pass, Merit or Distinction for the course as a whole.

Construction and Engineering

CONSTRUCTION AND THE BUILT ENVIRONMENT (BUILDING SERVICES - HEATING, VENTILATION & AIR CONDITIONING) HIGHER NATIONAL CERTIFICATE (PART TIME)

About this Course:

The purpose of BTEC Higher Nationals in Construction (Building Services - HVAC) is to develop students as professional, self-reflecting individuals able to meet the demands of employers in the construction and the built environment sector and adapt to a constantly changing world. The qualification aims to widen access to higher education and enhance the career prospects of those who undertake them

On this course, students will study the following units:

- Individual Project
- Construction Technology
- Construction Practice & Management
- Mathematics for Construction
- Principles of Heating System Design & Installation
- Principles of Ventilation & Air Conditioning Design & Installation
- Scientific Principles for Building Services
- Principles of Refurbishment

Entry Requirements:

The standard entry requirements are:

- Level 3 BTEC National Certificate/Diploma in Construction and the Built Environment (Building Services Engineering)
- More mature learners with relevant Building Services experience and an advanced qualification such as an NVQ, BTEC Level 3 Subsidiary Diploma in Construction or equivalent - may be eligible. In addition, mature students with level 4 or above in other relevant areas may be eligible, subject to interview. All students are expected to have maths qualifications at level 2 or above.

Applicants should hold a total UCAS Tariff points score from relevant qualifications of at least 96 points (see page 6 for full details).

COURSE FACTS

Qualification obtained:
Higher National Certificate in Construction and the Built Environment (Building Services - Heating, Ventilation and Air Conditioning)

Awarding body:
Pearson

Course code:
TC401

UCAS code:
N/A

Attendance mode:
Part-time day-release

Duration:
2 Years

Start date:
September 2019

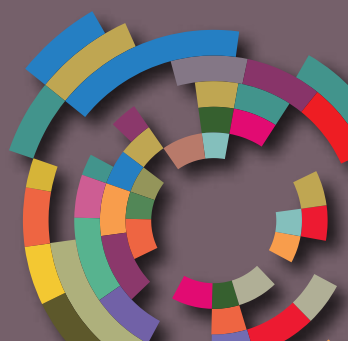
End date:
June 2021

Fees:
£3,500

Number of places:
18

Progression:
L5 programme/university

How to apply:
College: www.liv-coll.ac.uk



Skills and Knowledge Developed:

This Level 4 Higher National Certificate in Construction and The Built Environment (Building Services - Heating, Ventilation & Air Conditioning) offers students a broad introduction to the subject area via a mandatory core of learning, as well as units within general 'pathways', whilst allowing for the acquisition of skills and experience through the selection of a further (Level 4) unit across a range of occupational sectors. This effectively builds underpinning core skills, with general specialisation; preparing the student for further specialisation at Level 5. Students will gain a wide range of sector knowledge tied to practical skills gained in research, self-study, directed study and workplace scenarios.

Progression:

Completion of this course provides a number of options in both education and employment and sets students on their way to becoming a professional within the Built Environment.

In education, the course prepares students for a Level 5 qualification within the Construction and the Built Environment sector, bringing their professional and academic knowledge up to the required level.

Special Features:

Students' core skills are ultimately tested in the Group Building Services Integrative Project modules, via formal presentation to a panel of industry experts selected for their particular experience and expertise within the field of building services. Students are interviewed and questioned on their submission, and their ability to 'think on their feet' is tested in conjunction with the management skills acquired during the programme of study.

Teaching Methods:

The course is delivered through a blend of lectures, seminars, tutorials, independent study and industry guest speakers.

Assessment Methods:

The course is assessed through a blend of assignments, presentations, practical tasks and job knowledge tasks. Each subject is awarded a Pass, Merit or Distinction and the combined marks produce the final overall grade of Pass, Merit or Distinction for the course as a whole.



Construction and Engineering

CONSTRUCTION AND THE BUILT ENVIRONMENT (CIVIL ENGINEERING) HIGHER NATIONAL CERTIFICATE (PART TIME)

About this Course:

The purpose of BTEC Higher Nationals in Construction and The Built Environment is to develop students as professional, self-reflecting individuals able to meet the demands of employers in the construction and the built environment sector, and adapt to a constantly changing world. The qualification aims to widen access to higher education and enhance the career prospects of those who undertake them. On this course students will study the following units:

- Individual Project
- Construction Technology
- Construction Practice & Management
- Science & Materials
- Construction Information (Drawing, Detailing, Specification)
- Mathematics for Construction
- Principles of Structural Design
- Principles of Refurbishment.

Entry Requirements:

The standard entry requirements are:

- Level 3 BTEC National Certificate/Diploma in Construction and the Built Environment (Civil Engineering)
- More mature learners with relevant Civil Engineering experience and an advanced qualification - such as an NVQ, BTEC Level 3 Subsidiary Diploma in Construction or equivalent - may be eligible. In addition, mature students with level 4 or above in other relevant areas may be eligible, subject to interview. All students are expected to have a maths qualification at level 2 or above.

Applicants should hold a total UCAS Tariff points score from relevant qualifications of at least 96 points (see page 6 for full details).

COURSE FACTS

Qualification obtained:
Higher National Certificate in
Construction and the Built
Environment (Civil Engineering)

Awarding body:
Pearson

Course code:
TC499

UCAS code:
N/A

Attendance mode:
Part-time day-release

Duration:
2 Years

Start date:
September 2019

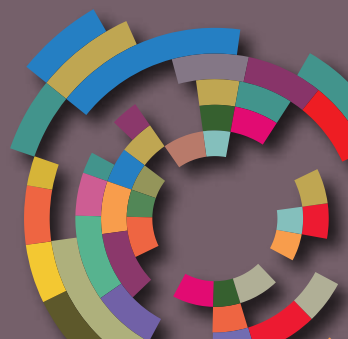
End date:
June 2021

Fees:
£3,500

Number of places:
18

Progression:
Level 5 programme/university

How to apply:
College: www.liv-coll.ac.uk





Skills and Knowledge Developed:

The Level 4 BTEC Higher National Certificate in Construction and The Built Environment (Civil Engineering) offers students a broad introduction to the subject area via a mandatory core of learning, as well as units within general 'pathways', whilst allowing for the acquisition of skills and experience through the selection of a further (Level 4) unit across a range of occupational sectors. This effectively builds underpinning core skills, with general specialisation; preparing the student for further specialisation at Level 5. Students will gain a wide range of sector knowledge tied to practical skills gained in research, self-study, directed study and workplace scenarios.

Progression:

Completion of this course provides a number of options in both education and employment and sets students on their way to becoming a professional within the built environment.

In education, the course prepares students for a Level 5 qualification within the construction and the built environment sector, bringing their professional and academic knowledge up to the required level.

Special Features:

Students' core skills are ultimately tested in the Group Building Services Integrative Project modules, via formal presentation to a panel of industry experts selected for their particular experience and expertise within the field of building services. Students are interviewed and questioned on their submission, and their ability to 'think on their feet' is tested in conjunction with the management skills acquired during the programme of study.

Teaching Methods:

The course is delivered through a blend of lectures, seminars, tutorials, independent study and industry guest speakers.

Assessment Methods:

The course is assessed through a blend of assignments, presentations, practical tasks and job knowledge tasks. Each subject is awarded a Pass, Merit or Distinction and the combined marks produce the final overall grade of Pass, Merit or Distinction for the course as a whole.

Construction and Engineering

CONSTRUCTION AND THE BUILT ENVIRONMENT (CONSTRUCTION) HIGHER NATIONAL CERTIFICATE PART TIME

About this Course:

The purpose of BTEC Higher Nationals in Construction and The Built Environment is to develop students as professional, self-reflecting individuals able to meet the demands of employers in the construction and the built environment sector, and adapt to a constantly changing world. The qualification aims to widen access to higher education and enhance the career prospects of those who undertake them. On this course students will study the following units:

- Individual project
- Construction technology
- Science and materials
- Construction practice and management
- Legal and statutory responsibilities in construction
- Construction information (drawing, detailing, specification)
- Principles of refurbishment
- Principles of alternative energy.

Entry Requirements:

- Level 3 BTEC National Certificate/Diploma in Construction & the Built Environment (Construction).
- More mature learners with relevant Construction experience and an advanced qualification - such as an NVQ, BTEC Level 3 Subsidiary Diploma in Construction or equivalent - may be eligible. In addition, mature students with level 4 or above in other relevant areas may be eligible, subject to interview. All students are expected to have a maths qualification at level 2 or above.

Applicants should hold a total UCAS Tariff points score from relevant qualifications of at least 96 points (see page 6 for full details).

Skills and Knowledge Developed:

The Level 4 BTEC Higher National Certificate in Construction and The Built Environment (Construction) offers students a broad introduction to the subject area via a mandatory core of learning, as well as units within general 'pathways', whilst allowing for the acquisition of skills and experience through the selection of a further (Level 4) unit across a range of occupational sectors.

COURSE FACTS

Qualification obtained:
Higher National Certificate in Construction and the Built Environment (Construction)

Awarding body:
Pearson

Course code:
TC403

UCAS code:
N/A

Attendance mode:
Part-time day-release

Duration:
2 Years

Start date:
September 2019

End date:
June 2021

Fees:
£3,500

Number of places:
18

Progression:
L5 industry-related programme, employer supported apprenticeship, or university

How to apply:
College: www.liv-coll.ac.uk



This effectively builds underpinning core skills, with general specialisation; preparing the student for further specialisation at Level 5. Students gain a wide range of sector knowledge tied to practical skills gained in research, self-study, directed study and workplace scenarios.

Progression:

Completion of this course provides a number of options in both education and employment and sets the student on their way to becoming a professional within the Built Environment.

In education, the course prepares students for a Level 5 qualification within the construction and the built environment sector, bringing their professional and academic knowledge up to the required level.

Teaching Methods:

The course is delivered through a blend of lectures, seminars, tutorials, independent study and industry guest speakers.

Assessment Methods:

The course is assessed through a blend of assignments, presentations, practical tasks and job knowledge tasks. Each subject is awarded a Pass, Merit or Distinction and the combined marks produce the final overall grade of Pass, Merit or Distinction for the course as a whole.



Construction and Engineering

CONSTRUCTION AND THE BUILT ENVIRONMENT (SURVEYING) HIGHER NATIONAL CERTIFICATE PART TIME

About this Course:

The purpose of BTEC Higher Nationals in Construction and The Built Environment is to develop students as professional, self-reflecting individuals able to meet the demands of employers in the construction and the built environment sector, and adapt to a constantly changing world. The qualification aims to widen access to higher education and enhance the career prospects of those who undertake them. On this course students will study the following units:

- Individual project
- Construction technology
- Science and materials
- Construction practice and management
- Legal and statutory responsibilities in construction
- Measurement and estimating
- Financial management and business practices in construction
- Principles of alternative energy.

Entry Requirements:

The standard entry requirements are:

- Level 3 BTEC National Certificate/Diploma in Construction & the Built Environment (Construction or Surveying).
- More mature learners with relevant Surveying experience and an advanced qualification - such as an NVQ, BTEC Level 3 Subsidiary Diploma in Construction or equivalent - may be eligible. In addition, mature students with level 4 or above in other relevant areas may be eligible, subject to interview. All students are expected to have a maths qualification at level 2 or above.

Applicants should hold a total UCAS Tariff points score from relevant qualifications of at least 96 points (see page 6 for full details).

COURSE FACTS

Qualification obtained:
Higher National Certificate in Construction and the Built Environment (Surveying)

Awarding body:
Pearson

Course code:
TC406

UCAS code:
N/A

Attendance mode:
Part-time day-release

Duration:
2 Years

Start date:
September 2019

End date:
July 2021

Fees:
£3,500

Number of places:
18

Progression:
Level 5 industry-related programme/degree

How to apply:
College: www.liv-coll.ac.uk



Skills and Knowledge Developed:

The Level 4 BTEC Higher National Certificate in Construction and The Built Environment (Surveying) offers students a broad introduction to the subject area via a mandatory core of learning, as well as units within general 'pathways', whilst allowing for the acquisition of skills and experience through the selection of a further (Level 4) unit across a range of occupational sectors. This effectively builds underpinning core skills, with general specialisation; preparing the student for further specialisation at Level 5. Students will gain a wide range of sector knowledge tied to practical skills gained in research, self-study, directed study and workplace scenarios.

Teaching Methods:

The course is delivered through a blend of lectures, seminars, tutorials, independent study and industry guest speakers.

Assessment Methods:

The course is assessed through a blend of assignments, presentations, practical tasks and job knowledge tasks. Each subject is awarded a Pass, Merit or Distinction and the combined marks produce the final overall grade of Pass, Merit or Distinction for the course as a whole.



Progression:

Completion of this course provides a number of options in both education and employment and sets students on their way to becoming a professional within the built environment.

In education, the course prepares students for a Level 5 qualification within the construction and the built environment sector, bringing their professional and academic knowledge up to the required level.

Construction and Engineering

ELECTRICAL AND ELECTRONIC ENGINEERING HIGHER NATIONAL CERTIFICATE

About this Course:

The purpose of the BTEC Higher National Certificate in Engineering is to develop students as professional, self-reflecting individuals who are able to meet the demands of employers in the rapidly evolving engineering sector and adapt to a constantly changing world. The qualifications also aim to widen access to higher education and enhance the career prospects of those who undertake them.

Specific units for the Electrical/Electronic programme are as follows:

Mandatory Core Units: Engineering Design; Engineering Maths; Engineering Science; Managing a Professional Engineering Project.

Mandatory Specialist units: Electrical & Electronic Principles.

Optional Units: Automation Robotics and PLC; Digital Principles; Electronic Circuits and Devices.

Entry Requirements:

- BTEC Level 3 qualification in Engineering
- A GCE Advanced Level profile that demonstrates strong performance in a relevant subject or adequate performance in more than one GCE subject. This profile is likely to be supported by GCSE grades at A* to C (or equivalent)
- Other related Level 3 qualifications
- An Access to HE Certificate awarded by an approved further education institution
- Related work experience
- An international equivalent of the above.

Applicants should hold a total UCAS Tariff points score from relevant qualifications of at least 96 points (see page 6 for full details).

COURSE FACTS

Qualification obtained:
Higher National Certificate in
Electrical and Electronic
Engineering

Awarding body:
Pearson

Course code:
TL441 - full time
TL442 - part time

UCAS code:
H600

Attendance mode:
1 year full time
2 years part time

Start date:
September 2019

End date:
June 2020 full time
June 2021 part time

Fees:
£7,000 Full-time
£3,500 Part-time

Number of places:
14

Progression:
Second year degree level
programme, or employment

How to apply:
College: www.liv-coll.ac.uk (P/T)
Ucas: www.ucas.ac.uk (F/T)



Skills and Knowledge

Developed:

Students need both good qualifications and employability skills to enhance their career prospects and personal development. This course embeds the development of key skills throughout the programme, attributes and strengths required by twenty-first century employers.

Where employability skills are referred to, this generally means skills in three main categories:

- Cognitive and problem-solving skills: critical thinking, approaching non-routine problems by applying expert and creative solutions; use of systems and digital technology; generating and communicating ideas creatively.
- Intrapersonal skills: self-management; adaptability and resilience; self-monitoring and self-development; self-analysis and reflection; planning and prioritising.
- Interpersonal skills: effective communication and articulation of information; working collaboratively; negotiating and influencing; self- presentation.

Students can also benefit from opportunities for deeper learning, where they are able to make connections between units and select areas of interest for detailed study. In this way, the Higher National qualification in Engineering provides a vocational context in which students can develop the knowledge and academic study skills required for particular degree courses and progression to university, including:

- Active research skills
- Effective writing skills
- Analytical skills
- Critical thinking
- Creative problem-solving
- Decision-making
- Team building
- Digital literacy
- Practical design and build skills
- Experimental and testing techniques
- Competence in assessment methods used in higher education.

Progression:

The Higher National Certificate provides a solid grounding in engineering, which students can build on should they decide to continue their studies beyond the Certificate stage.

On successful completion of the Level 4 Higher National Certificate, students can progress into employment or continue their study at level 5 - HND in Engineering (Top-Up) - which provides an opportunity to extend an existing HNC qualification to a higher level with study of more in depth specialist units.

Special Features:

The College has up-to-date equipment and software to complement or prepare students for work in engineering industries. Released students are encouraged to complete a work-based project.

Where appropriate, the teaching is practically based.

Teaching Methods:

The teaching and learning strategies used to promote these skills are developed through the programme outlined above.

Analysis and problem solving skills are developed through coursework and laboratory/workshop activities.

Practical, research and design skills are developed through coursework, assignments and laboratory/workshop activities.

Assessment Methods:

The assessment of this is through practical activities, activity write-ups, coursework/ research reports and project reports and presentations.

Construction and Engineering

ENGINEERING (MANUFACTURING) HIGHER NATIONAL CERTIFICATE

About this Course:

The HNC in Manufacturing Engineering provides a specialist work-related programme of study that covers the key knowledge, understanding and practical skills required in the Manufacturing Engineering sector. In this pathway, students take four mandatory core units, two specialist units and an additional two optional units.

Mandatory Core Units: Engineering Design; Engineering Maths; Engineering Science; Managing a Professional Engineering Project.

Mandatory Specialist units: Production Engineering for Manufacture; Quality and Process Improvement.

Optional Units: Mechanical Principles; CAD for Maintenance Engineers.

Entry Requirements:

For students who have recently been in education, the entry profile is likely to include one of the following:

- A* to C grade in GCSE Maths
- BTEC Level 3 qualification in Engineering (MPP Grade)
- GCE Advanced Level profile that demonstrates strong performance in a relevant subject or adequate performance in more than one GCE subject. This should be supported by GCSE grades at A* to C (or equivalent)
- other related Level 3 qualifications
- Access to Higher Education Certificate awarded by an approved further education institution
- related work experience
- an international equivalent of the above.

Applicants should hold a total UCAS Tariff points score from relevant qualifications of at least 96 points (see page 6 for full details).

COURSE FACTS

Qualification obtained:
Higher National Certificate in Manufacturing Engineering

Awarding body:
Pearson

Course code:
TL443 - full time
TL444 - part time

UCAS code:
H601

Attendance mode:
Full time/part time

Duration:
1 year full time
2 years part time

Start date:
September 2019

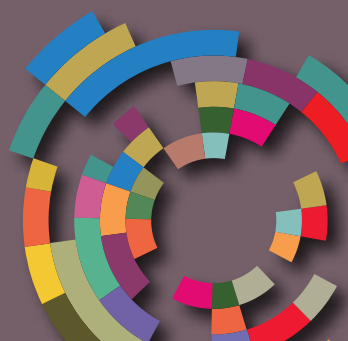
End date:
June 2020 full time
June 2021 part time

Fees:
£7,000 Full-time
£3,500 Part-time

Number of places:
14

Progression:
Level 5 or degree level programme, or employment

How to apply:
College: www.liv-coll.ac.uk (P/T)
Ucas: www.ucas.ac.uk (F/T)



Skills and Knowledge Developed:

The course will:

- provide preparation for a range of technical and management careers in engineering
- provide specialised studies which are directly relevant to individual vocations and professions in which students are currently working, or in which they intend to seek employment
- enable students to make an immediate contribution in employment
- provide flexibility, knowledge, skills and motivation as a basis for progression to graduate and postgraduate studies
- develop the range of skills, techniques, personal qualities and attitudes which are essential for successful performance in working life.

Progression:

The Higher National Certificate provides a solid grounding in engineering which students can build on should they decide to continue their studies beyond the Certificate stage.

On successful completion of the Level 4 Higher National Certificate, students can progress into employment or continue their study at level 5 - HND in Engineering (Top Up) - which provides an opportunity to extend an existing HNC qualification to a higher level with study of more in depth specialist units.

Teaching Methods:

- The teaching and learning strategies used to promote these skills are developed through the programme outlined above
- Analysis and problem solving skills are developed through coursework and laboratory/workshop activities
- Practical, research and design skills are developed through coursework, assignments and laboratory/workshop activities.

Assessment Methods:

Assessment of the course is through practical activities, activity write-ups, coursework reports and project reports and presentations.



Construction and Engineering

ENGINEERING (GENERAL)

HIGHER NATIONAL DIPLOMA TOP-UP

About this Course:

The purpose of BTEC Higher Nationals in Engineering is to develop students as professional, self-reflecting individuals who are able to meet the demands of employers in the rapidly evolving engineering sector and adapt to a constantly changing world. The qualifications also aim to widen access to higher education and enhance the career prospects of those who undertake them.

Holders of the Level 5 Higher National Diploma will have developed a sound understanding of the principles in their field of study, and will have learned to apply those principles more widely. Through this they will have learned to evaluate the appropriateness of different approaches to solving problems. They will also be able to perform effectively in their chosen field, and will have the qualities necessary for employment in situations requiring the exercise of personal responsibility and decision-making.

The HND in General Engineering provides a specialist work-related programme of study that covers the key knowledge, understanding and practical skills required in the Engineering sector. In this pathway students take two mandatory core units, two specialist units and an additional three optional units.

Core/specialist units - all four units must be taken:

- Research project
- Professional Engineering Management (Pearson Set Assignment)
- Further Mathematics
- Lean Manufacturing.

Optional units - three to be chosen from list below:

- Advanced Mechanical Principles
- Sustainability
- Manufacturing Systems Engineering
- Further Electrical, Electronic and Digital Principles
- Further Control Systems Engineering.

Entry Requirements:

- Level 4 HNC in Engineering (Electrical and Electronic Engineering) - RQF
- Level 4 HNC in Engineering (General Engineering) - RQF
- Level 4 HNC in Engineering (Manufacturing Engineering) - RQF
- Level 4 HNC in Engineering (Mechanical Engineering) - RQF
- HNC in a relevant engineering area (preferably RQF).

Applicants should hold a total UCAS Tariff points score from relevant qualifications of at least 96 points (see page 6 for full details).

COURSE FACTS

Qualification obtained:
Higher National Diploma in Engineering (General)

Awarding body:
Pearson

Course code:
TL506

UCAS code:
H602

Attendance mode:
Full time/part time

Duration:
1 year full time
2 years part time

Start date:
September 2019

End date:
June 2020 full time
June 2021 part time

Fees:
£7,000 Full-time
£3,500 Part-time

Number of places:
18

Progression:
Degree level programme in Engineering, or employment

How to apply:
College: www.liv-coll.ac.uk (P/T)
Ucas: www.ucas.ac.uk (F/T)



Skills and Knowledge Developed:

- Provides preparation for a range of technical and management careers in engineering
- Provides specialised studies which are directly relevant to individual vocations and professions in which students are currently working, or in which they intend to seek employment
- Enables students to make an immediate contribution in employment
- Provides flexibility, knowledge, skills and motivation as a basis for progression to graduate and postgraduate studies
- Develops the range of skills and techniques, personal qualities and attitudes which are essential for successful performance in working life.

Progression:

The Higher National Diploma provides a solid grounding in engineering, which students can build on should they decide to continue their studies beyond the Certificate stage.

On successful completion of the Level 5 Higher National Diploma, students have the opportunity to progress into employment or continue their study at degree level.

Special Features:


The college has up-to-date equipment and software to complement or prepare students for work in engineering industries. Released students are encouraged to complete a work-based project.

Teaching Methods:

- The teaching and learning strategies used to promote these skills are developed through the programme outlined above
- Analysis and problem solving skills are developed through coursework and laboratory/workshop activities
- Practical, research and design skills are developed through coursework, assignments and laboratory/workshop activities.

Assessment Methods:

Assessment of this course is through practical activities, activity write-ups, coursework reports and project reports and presentations.



The construction industry is worth around £164bn in output value to the UK economy.

The construction industry supports 2.73m employees in Great Britain.

**Over 50,000 jobs
across 3,000
companies in the
Liverpool City Region**



Health and Social Care



The health and social care sector is a growing economy in the UK. It is a major employer and employs 1.4m people - around 10% of the country's workforce. It is estimated to contribute £40.4bn per annum to the English economy and is projected to generate a further 275,000 jobs by 2025.

Health and Social Care

DENTAL TECHNOLOGY FOUNDATION DEGREE

About this Course:

This course has been developed and built to match the requirements of dental technicians, employers, professional bodies, and also meet the statutory regulator's requirements for recognition of the higher technical skills required by modern dental technicians. These are steps needed to gain the knowledge, understanding and competence required to develop as a dental care professional (DCP).

This foundation degree recognises the practical skills training provided by a 'workplace mentor' in one of the disciplines of dental technology, and formal credit will be given for the developed competence and integration with other members of the dental team.

Entry Requirements:

- GCSE English Language at grade C or above or equivalent
- MMM grade profile (BTEC Level 3 Extended Diploma)

We also welcome applications from those with relevant experience in lieu of the minimum entry requirements.

All applicants must be employed full time in a dental laboratory.

Applicants should hold a total UCAS Tariff points score from relevant qualifications of at least 96 points (see page 6 for full details).

Skills and Knowledge Developed:

This programme is intended to provide students with an opportunity to develop the knowledge, understanding and real work-based competence to effectively operate as a dental technician and also to register with the General Dental Council (GDC) as a dental technician. It is therefore essential that students attend all planned sessions and complete to high standards the work set for student development and assessment.

Progression:

This programme produces graduates skilled in a broad range of specialist areas, and progression is through direct entry into the industry or through the degree top-up.

COURSE FACTS

Qualification obtained:
Foundation Degree in
Dental Technology

Awarding body:
The Open University

Course code:
VS404

UCAS code:
N/A

Attendance mode:
Part time

Duration:
3 years

Start date:
September 2019

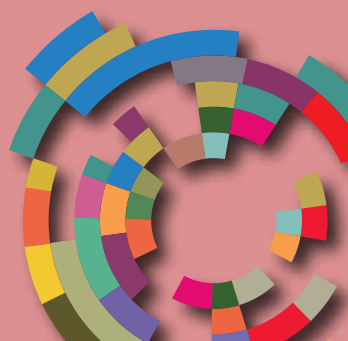
End date:
January 2022

Fees:
£5,305

Number of places:
14

Progression:
Third year degree programme -
BSc Dental Technology, or
employment

How to apply:
College: www.liv-coll.ac.uk (P/T)



Special Features:

Within the scheme, there is opportunity for learners to attain a level of professional practice. Strong links to the GDC and other dental programmes facilitate industry-related briefs and real scenarios that provide an opportunity for students to acquire professional work ethics, time planning skills and working within a dental laboratory. Learning is supported through a series of external manufacturers and suppliers who provide hands-on training in any new technologies as they are introduced.

Teaching Methods:

The knowledge and skills acquired on the programme link directly to the vocational context and diversify into a range of skills required by the dental manufacturing industries. These include (but are not exclusive to) removable prosthodontics, fixed prosthodontics and removable orthodontics and business and enterprise competence.

Teaching and Learning methods include formal lectures and seminars which underpin the creative and technical practical workshop-style sessions with relevant historical and cultural reference.

Practical modules take place in the laboratory environment with tutor support and guidance, with a series of extra independent learning sessions timetabled to allow access to specialist equipment and resources.



Assessment Methods:

The programme is assessed through the submission of written essays, reports, a series of project-based practical assessments, assessment of laboratory practice, a final project and the submission of clinically acceptable dental appliances.

Formative feedback will support student progression in both written work and technical outcomes. Self and peer assessment in convener/critique situations is an essential element of all projects and the feedback from these will enhance student achievement and progression.



Health and Social Care

DENTAL TECHNOLOGY BSc (HONS) TOP-UP

About this Course:

This course has been developed to allow students who gain the Dental Technology foundation degree to top-up to a full Honours degree through a further two years part time study. It is built to match the requirements of dental technicians, employers, professional bodies, and also meet the statutory regulator's requirements for recognition of the higher technical skills required by modern dental technicians.

These are the steps needed to gain the knowledge, understanding and competence required to develop as a Dental Care Professional (DCP). This top-up course recognises the practical skill training provided by a 'work place mentor' in one of the disciplines of dental technology, and formal credit will be given for the developed competence and integration with other members of the dental team.

Entry Requirements:

GCSE English Language at grade C or above or equivalent.

Indicative requirements: Foundation Degree in Dental Technology or equivalent. Applicants must be employed full time in a dental laboratory and registered with the General Dental Council.

We also welcome applications from those with relevant experience in lieu of the minimum entry requirements.

Applicants should hold a total UCAS Tariff points score from relevant qualifications of at least 96 points (see page 6 for full details).

Skills and Knowledge Developed:

The BSc Dental Technology programme is intended to provide students with the opportunity to develop the knowledge, understanding and real work-based competence to effectively operate as dental technicians and be able to register with the General Dental Council (GDC) as a dental technician. It is therefore essential that students attend all planned sessions and complete to high standards the work set for student development and assessment.

COURSE FACTS

Qualification obtained:
BSc Honours Degree in
Dental Technology

Awarding body:
The Open University

Course code:
VS902

UCAS code:
N/A

Attendance mode:
Full time/part time

Duration:
1 year full time
2 years part time

Start date:
September 2019

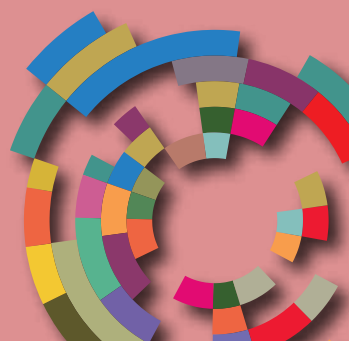
End date:
June 2020 full time
June 2021 part time

Fees:
£3,979

Number of places:
14

Progression:
Postgraduate study, or
employment

How to apply:
College: www.liv-coll.ac.uk (P/T)





Progression:

This programme produces graduates skilled in a broad range of specialist areas, and progression is through direct entry into the industry or through further study at post graduate level.

Special Features:

Within the scheme, there will be opportunity for learners to attain a level of professional practice. Strong links to the GDC and other dental programmes will facilitate industry-related briefs and real scenarios that provide an opportunity for students to acquire professional work ethics, time planning skills and working within a dental laboratory. Learning is supported through a series of external manufacturers and suppliers who provide hands on training in any new technologies as they are introduced.

Teaching Methods:

The knowledge and skills acquired on the programme will link directly to the vocational context and will diversify into a range of skills required by the dental manufacturing Industries. These will include (but are not exclusive to) removable prosthodontics, fixed prosthodontics and removable orthodontics and business and enterprise competence.

Teaching and Learning methods include formal lectures and seminars which underpin the creative and technical practical workshop-style sessions with relevant historical and cultural reference.

Practical modules take place in the laboratory environment with tutor support and guidance, with a series of independent learning sessions timetabled to allow access to the specialist equipment and resources.

Assessment Methods:

The programme is assessed through the submission of written essays, reports, a series of project-based practical assessments, assessment of laboratory practice, a final project and the submission of clinically acceptable dental appliances.

Formative feedback will support student progression in both written work and technical outcomes. Self and peer assessment in convener/critique situations will be an essential element of all projects and the feedback from these will enhance student achievement and progression.

**Average annual salary June 2017:
£23,171 per annum.**

**542 vacancies in health and social
care in June 2017.**

Health and Social Care

EARLY YEARS PRACTICE FOUNDATION DEGREE

About this Course:

The Foundation Degree in Early Years Practice is a full time qualification which provides students with the specialist knowledge and skills required within the Early Years sector. It is awarded by Liverpool John Moores University (LJMU).

This level 4/5 qualification has been developed in collaboration with Early Years' employers, LJMU and other partner colleges.

Work-based learning is a key part of a student's learning. Students will use their workplace, including a chosen mentor and everyday duties as a key learning resource throughout the programme.

Course content at level 4 includes: Working in Partnership; Early Years Education; The Developing Child, Technology Within the Early Years; Personal Professional Development; The History of Childhood.

At level 5, course content includes: Reflection in the Early Years; Inclusion, Health and Well Being; Research Enquiry; Safeguarding Practice Within the Early Years; Leading and Managing in the Early Years.

Entry Requirements:

- A level 3 full and relevant qualification (as listed by the DfE) in childcare. A full list of relevant qualifications is found at: <http://www.education.gov.uk/eypqd/level5.shtml>
- GCSE in English at grade C or above or equivalent (e.g. Level 2 Key Skills Communication; Level 2 Functional Skills)

Candidates without GCSE English (grade C or above) will be required to write a short essay at the time of interview to demonstrate the ability to understand and make use of written material to ensure they are able to communicate clearly and accurately in spoken and written English.

- A satisfactory reference from their employer or voluntary organisation, which indicates support for the student in undertaking the Foundation Degree and in providing a mentor to support the student with their work-based learning.

In addition to above, for those qualifying at level 3 prior to September 2017:

- At least two years recent/relevant experience working with children in either paid or voluntary employment

COURSE FACTS

Qualification obtained:
Foundation Degree in
Early Years Practice

Awarding body:
Liverpool John Moores
University (LJMU)

Course code:
VS403

UCAS code:
X310

Attendance mode:
Full time

Duration:
2 years

Start date:
September 2019

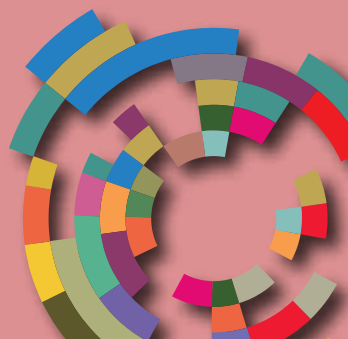
End date:
June 2021

Fees:
£7,957

Number of places:
20

Progression:
Articulated route - BA (Hons)
Supporting Learning and
Development, BA (Hons)
Early Childhood Studies
(CoLC) or employment

How to apply:
Ucas: www.ucas.ac.uk (F/T)



- Evidence from employer or voluntary organisation of a recent, clear DBS check (i.e. completed in the 12 months prior to start of programme).

In addition, for those qualifying at Level 3 after September 2014:

- A work-based placement within a good Early Years establishment for a minimum of 300 hours. N.B. Support can be provided in finding an appropriate placement once a 'conditional' place on the course has been offered.

N.B. For students whose education has not been in English, evidence will be required of proficiency in English.

Typically, applicants will need to have achieved: Band 6.5 in the IELTS (International English Language Testing Scheme), and/or TOEFL (Test of English as a Foreign Language) score of 580 or above (completed within 2 years of date of application to the Foundation Degree).

Applicants should hold a total UCAS Tariff points score from relevant qualifications of at least 96 points (see page 6 for full details).

Skills and Knowledge Developed:

The programme aims to:

- Provide the appropriate knowledge and understanding required for the care and education of children across children's services, considering a range of pedagogical approaches
- Provide an appropriate understanding of the regulatory and legislative framework for Early Years, and prepare students to work within this framework
- Ensure that students can observe, assess and plan, to meet the individual needs of babies and young children
- To enhance multi-professional practices, working collaboratively with others in an Early Years context

- Deliver the professional and practical skills and competencies required to work in children's services, demonstrating knowledge of political, economic, cultural and ideological contexts

- Ensure students can demonstrate within their practice that they have adopted appropriate value and belief systems for Early Years or play or school-based settings; these include values relating to anti-discriminatory practice, equality of opportunity and ensuring inclusive practice
- Develop student's self-awareness and reflection, including the ability to evaluate their effect on other people and in the environment in which they work
- Develop student's ability to understand and apply the principles of evidence-based practice
- Develop students as reflective practitioners, with an understanding of the need for commitment and lifelong learning
- Develop the personal and transferable skills critical to practitioners in children's services. These skills include communication, application of numbers, IT, team working, problem solving, effective time management, self-reflection and academic writing
- Provide a suitable basis for progression to Honours level, via an appropriate further programme of study.

Progression:

Successful completion of the foundation degree may lead to increased promotion opportunities within the Early Years sector and may also lead to the ability to work at a level recognised by employers as Senior Practitioner.

Subject to availability of places within the university, achievement of the foundation degree also allows progression to the articulated route of BA (Hons) Supporting, Learning and Development at LJMU, or BA (Hons) Top-Up Early Years Childhood Studies at The City of Liverpool College.

The foundation degree may also be used as a bridge towards gaining Early Years teacher status working with children from birth to five.

Students wanting to progress on to the Early Years Teacher status will be required to have as minimum GCSEs at grade C in English Language, maths and science.

Special Features:

The Foundation Degree in Early Years Practice provides students with the specialist knowledge and skills required within the Early Years sector. Part of this qualification is based around work-based learning.

Teaching Methods:

Delivery of teaching and facilitation of learning has been designed to provide an appropriate level of challenge and to stimulate personal and academic development. This enables students to progress towards achievement of the programme aims and learning outcomes.

Traditional methods such as lectures, tutorials, seminar presentations, visits, debates, discussions and research are complemented by more innovative approaches, such as elements of web-based learning, including the virtual learning environment (VLE) and discussion forums.

Teaching methods have been devised to promote academic development as students progress on the course. Students are required to reflect upon their learning on the programme and consider this in light of their own practice or interactions with children, parents and families, other colleagues or agencies through a learning journal.

Teaching strategies also promote the development of transferable skills appropriate to the academic progression at this level. Examples include: thematic exploration; selection and evaluation of information sources; research skills; critical analysis and evaluation; synthesis of ideas.

Students develop the knowledge and skills needed to work successfully as part of a team. Students also have the opportunity to develop communication skills with children and other

professionals and parents/families and will develop skills in presenting a variety of information using a range of information and communication technology (ICT).

Teaching and learning strategies across the programme are designed to encourage and increase independence as a learner whilst maintaining appropriate support.

Increased contact in the first year is particular to the Personal, Professional Development module. This is a 20 credit module and the increased contact time compared to other modules is to facilitate keynote lectures with accompanied tutorials/seminars. These lectures provide a framework for the development of the student's knowledge, private reading, work-based learning and assignment preparation/study skills.

Assessment Methods:

Assessment is in accordance with the current assessment regulations which operate within the Academic Framework. These regulations apply to all forms of assessment included in the programme. Please note: it is the student's responsibility to be aware of, and understand, the assessment regulations.

A range of assessment methods are used throughout level 4 and 5 and include reports, essays, presentations individual and seminar, reflective accounts, timed essays, case studies and portfolios.



Health and Social Care

EARLY CHILDHOOD STUDIES BA (HONS) TOP-UP

About this Course:

The BA (Hons) top-up level 6 is a one-year full time higher education qualification for experienced early years' practitioners who have successfully completed a Foundation Degree in Early Years.

Students develop knowledge and understanding of the principles and values that underpin the early years in order to develop their professional practice. The programme aims to encourage students to reflect and critically analyse a range of perspectives in relation to contemporary issues in the early years.

Entry Requirements:

- A full and relevant early years qualification at level 3
- A Level 5 qualification with 240 credits achieved from a Foundation Degree in Early Years or a similar undergraduate level 5 programme
- Relevant experience within the Early Years
- Students are required to obtain a Disclosure and Barring service (DBS) check.

Skills and Knowledge Developed:

- Students will gain knowledge and understanding of the principles and values that underpin early years in order to develop their professional practice. The programme aims to encourage students to reflect and critically analyse a range of perspectives in relation to contemporary issues in the early years

On successful completion, the student will be able to:

- Demonstrate a systematic understanding of key aspects within the early years, including acquisition of coherent and detailed knowledge, at least some of which is at, or informed by, the forefront of defined aspects of a discipline
- Deploy accurately established techniques of analysis and enquiry
- Devise and sustain arguments, and/or to solve problems, using ideas and techniques, some of which are at the forefront of a discipline
- Describe and comment upon particular aspects of current research, or equivalent advanced scholarship in the discipline

COURSE FACTS

Qualification obtained:
BA Honours Degree in
Early Childhood Studies

Awarding body:
The Open University

Course code:
VS903

UCAS code:
XX32

Attendance mode:
Full time/part time

Duration:
1 year full time
2 years part time

Start date:
September 2019

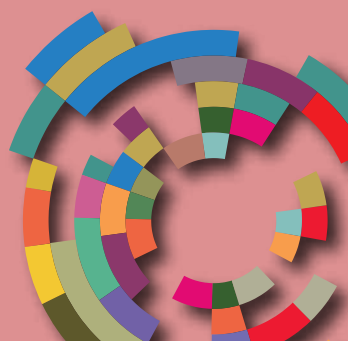
End date:
June 2020 full time
June 2021 part time

Fees:
£7,957

Number of places:
12

Progression:
Postgraduate study, or
employment

How to apply:
Ucas: www.ucas.ac.uk (F/T)



- Appreciate the uncertainty, ambiguity and limits of knowledge
- Manage their own learning, and make use of scholarly reviews and primary sources
- Apply methods and techniques learned to review, consolidate, extend and apply knowledge and understanding, and to initiate and carry out projects
- Critically evaluate arguments, assumptions, abstract concepts and data (that may be incomplete) to make judgements, and to frame appropriate questions to achieve a solution - or identify a range of solutions to a problem
- Communicate information, ideas, problems and solutions to both specialist and non - specialist audiences.

Holders will also have:

- The qualities and transferable skills necessary for employment, requiring:
 - The exercise of initiative and personal responsibility
 - Decision-making in complex and unpredictable contexts
 - The learning ability needed to undertake appropriate further training of a professional or equivalent nature.

Applicants should hold a total UCAS Tariff points score from relevant qualifications of at least 96 points (see page 6 for full details).

Progression:

On completion of the course, graduates can progress to positions of further responsibility within the Early Years workforce. Students can also apply for postgraduate qualifications including Teacher Training or Early Years Teacher Status. Students will need GCSE grade C or above in maths, English and science to progress onto a postgraduate course.

Special Features:

Within the scheme, there will be opportunity for learners to attain a level of professional practice. The level 6 top-up degree in Early Years is an employment-related educational qualification which will provide students with the specialist knowledge and skills required within the Early Years sector. All modules link theory to practice.

Teaching Methods:

Knowledge and understanding will be acquired through the following range of approaches to module delivery:

- Teaching and learning methods employed by the programme team will be balanced between tutor centred and student centred activities that enable conformity to the core values of the teaching and learning strategy to be implemented.

The following range of teaching and learning methods will be employed:

Lecture; teaching workshop; seminars; group critiques; self-directed learning; peer group learning; written work; oral presentation; group work; library study; visiting speakers and mentoring visits.

Assessment Methods:

The programme aims to provide key knowledge and develop transferable skills, and assessment tasks are developed to put this knowledge into practice and research issues further. The methods listed will be employed both for learning and assessing of the learning achieved. Students will receive timely, relevant and constructive feedback to enable skills to continue to develop.

The variety of assessments include:

- Research Dissertation
- Portfolio
- Essay
- Presentation
- Debate
- Report.

Health and Social Care

HEALTHCARE PRACTICE HIGHER NATIONAL CERTIFICATE

About this Course:

This is a unit-based programme that provides the underpinning knowledge, understanding and skills for a successful career in the health and/or social care sector. A range of core and specialist modules are undertaken, and you will develop your time management and organisational skills.

You will complete a programme of 120 units comprising of 7 different modules, five of which are core modules specified by the awarding body. A further two are chosen by the institution to complement the study programme and enable progression onto the level 5 HND Healthcare Practice programme.

Entry Requirements:

At interview, you will need to demonstrate a strong interest in working in the health and social care sector, preferably with an awareness of caring achieved through some health or social care related work experience, either paid or voluntary. In addition to this, you will hold one of the following:

- National Certificate or Diploma in Health and Social Care
- AVCE/Advanced GS/NVQ in an appropriate vocational area
- A-level profile which demonstrates strong performance in a relevant subject or an adequate performance in more than one A-level subject. This profile is likely to be supported by GCSEs at grade C or above
- Other related level 3 qualification
- Access to Higher Education certificate awarded by an approved further education institution.

Applicants should hold a total UCAS Tariff points score from relevant qualifications of at least 96 points (see page 6 for full details).

Skills and Knowledge Developed:

On the programme, you will study the following mandatory core units:

- Law, Policy and Ethical Practice in Health and Social Care
- Demonstrating Professional Principles and Values in Health and Social Care Practice

COURSE FACTS

Qualification obtained:
Higher National Certificate in
Healthcare Practice

Awarding body:
Pearson

Course code:
VS900

UCAS code:
4L47

Attendance mode:
Full time/part time

Duration:
1 year full time
2 years part time

Start date:
September 2019

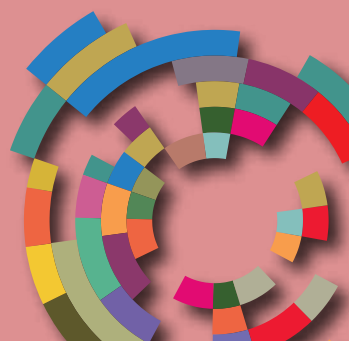
End date:
June 2020 full time
June 2021 part time

Fees:
£6,313 full-time
£3,157 part-time

Number of places:
16

Progression:
HND in Healthcare Practice,
second/third year of a related
degree programme or
employment

How to apply:
College: www.liv-coll.ac.uk (P/T)
Ucas: www.ucas.ac.uk (F/T)



- Supporting the Individual Journey through Integrated Health and Social Care;
- Fundamentals of Evidence-based Practice (Pearson-set Project)
- Effective Reporting and Record-keeping in Health and Social Care Services.

There are also two further optional units:

- Sociological and Psychological Perspectives on Health
- Supporting Dementia Care.

You will also study specialist units, including Social Policy; The Sociological Context of Health and Social Care; Psychology for Health and Social Care.

Progression:

You can progress to a Level 5 HND in Healthcare Practice.

N.B: This award may allow progression onto another higher education programme of study but you will need to check entry requirements for that programme.

This course is a Level 4 qualification in the Qualifications and Credit Framework. It does not lead to a professional qualification in nursing, medicine or social work.

Special Features:

All course tutors are subject specialists with a wide range of extensive experience in these fields of practice. Learners gain an understanding of the use of information and communication technology as a tool in health and social care settings. Guest speakers aid understanding and add currency to your learning. You will also present evidence that effectively reflects your abilities as a developing care worker in the field of health or social care.

Teaching Methods:

The course primarily uses classroom-based teaching methods, supplemented by guided, independent study, which is facilitated by materials and tasks made available to you via The City of Liverpool College's student intranet. Learning from workplace experience is developed and consolidated in through tutor visits to the workplace and college-based programme activities.

Assessment Methods:

A range of assessment methods are used including academic essays, reports, shorter workbook-based tasks and skills development tasks, including presentations. In addition, a portfolio is used to record your development and progress through workplace activity.



Health and Social Care

HEALTHCARE PRACTICE HIGHER NATIONAL DIPLOMA TOP-UP

About this Course:

This is a unit-based programme that provides the underpinning knowledge, understanding and skills for a successful career in the health and/or social care sector. A range of core and specialist modules are undertaken, and you will develop your time management and organisational skills.

You will complete a programme of 120 units comprising of 8 different modules, five of which are core modules specified by the awarding body, with a further three chosen by the institution to complement the study programme.

Entry Requirements:

At interview, you will need to demonstrate a strong interest in working in the health and social care sector, preferably with an awareness of caring achieved through some health or social care related work experience, either paid or voluntary. In addition to this, you will hold one of the following:

- National Certificate or Diploma in Health and Social Care
- AVCE/Advanced GS/NVQ in an appropriate vocational area
- A-level profile which demonstrates strong performance in a relevant subject or an adequate performance in more than one A-level subject. This profile is likely to be supported by GCSEs at grade C or above
- Completed HNC in Healthcare or equivalent Level 4 certificate of higher education.

Applicants should hold a total UCAS Tariff points score from relevant qualifications of at least 96 points (see page 6 for full details).

Skills and Knowledge Developed:

On the programme, you will study the following mandatory core units:

- Innovation and improvement through Action research (Person set project)
- Reflective Approaches in Implementing Person-Centred Practice
- Health Psychology
- Social Policy in Public Health
- Holistic Approaches to Health Promotion.

There are also two further optional units (to be confirmed).

COURSE FACTS

Qualification obtained:
Higher National Diploma in
Healthcare Practice

Awarding body:
Pearson

Course code:
TBC

UCAS code:
4L48

Attendance mode:
Full time/part time

Duration:
1 year full time
2 years part time

Start date:
September 2019

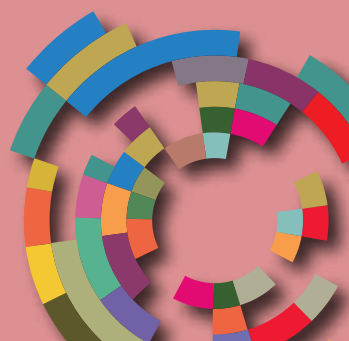
End date:
June 2020 full time
June 2021 part time

Fees:
£6,129 full-time
£3,065 part-time

Number of places:
16

Progression:
Degree level programme or
employment

How to apply:
College: www.liv-coll.ac.uk (P/T)
Ucas: www.ucas.ac.uk (F/T)



Progression:

This award may allow progression onto another higher education programme of study but you should check entry requirements for that programme.

This course is a Level 5 qualification in the Qualifications and Credit Framework.

NOTE: This course does not lead to a professional qualification in nursing, medicine or social work.

Special Features:

All course tutors are subject specialists with a wide range of extensive experience in these fields of practice. Learners gain an understanding of the use of information and communication technology as a tool in health and social care settings. Guest speakers aid understanding and add currency to your learning. You will also present evidence that effectively reflects your abilities as a developing care worker in the field of health or social care.

Teaching Methods:

The course primarily uses classroom-based teaching methods, supplemented by guided, independent study, which is facilitated by materials and tasks made available to students via The City of Liverpool College's student intranet. Learning from workplace experience is developed and consolidated in through tutor visits to the work place and college-based programme activities.

Assessment Methods:

A range of assessment methods are used including academic essays, reports, shorter workbook-based tasks and skills development tasks, including presentations.

In addition, a portfolio is used to record the student's development and progress through workplace activity.





Hospitality, Tourism and Sport

A photograph of a man in a dark suit and red tie, and a woman in a white shirt and dark apron, both smiling. They are in a restaurant or bar setting with warm lighting and blurred background elements like shelves and lights.

Hospitality, tourism and sport are rapidly expanding industries in the region that require workers to hold a range of career-related skills. Our programmes are designed to produce graduates with advanced skills, many of which are transferable across a range of disciplines.

Hospitality, Tourism and Sport

HOSPITALITY MANAGEMENT HIGHER NATIONAL CERTIFICATE

About this Course:

This HNC in Hospitality Management prepares learners for work at a managerial level in the hospitality sector. The course develops strong, sector-related practical skills, alongside the development of requisite knowledge and understanding.

The core mandatory units studied are as follows:

- The Contemporary Hospitality Industry
- Managing the Customer Experience
- Professional Identity and Practice
- The Hospitality Business Toolkit
- Leadership and Management for Service Industries (Pearson-set unit).

The three further optional units at Level 4 are as follows:

- Managing Food and Beverage Operations
- International Gastronomy
- Work Experience.

Entry Requirements:

- GCSE English Language at grade C or above or equivalent.
- A-levels or equivalent related Level 3 qualification
- Relevant work experience will be considered
- All applicants will require an initial assessment and interview.

Applicants should hold a total UCAS Tariff points score from relevant qualifications of at least 96 points (see page 6 for full details).

Please note: Students need to undertake a minimum of 80 hours work with an approved employer

Skills and Knowledge Developed:

HNC Hospitality Management Level 4 equips learners with the skills in a hospitality management context, including:

- Investigatory and research skills
- Problem solving
- Finance Management
- Communication.

All within the context of a hospitality setting.

COURSE FACTS

Qualification obtained:
Higher National Certificate in
Hospitality Management

Awarding body:
Pearson

Course code:
VL998

UCAS code:
NN86

Attendance mode:
Full time/part time

Duration:
1 year full time
2 years part time

Start date:
September 2019

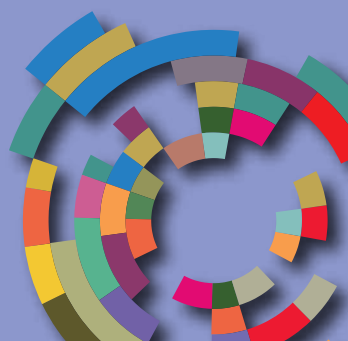
End date:
June 2020 full time
June 2021 part time

Fees:
£6,313

Number of places:
18

Progression:
Second year of degree level
programme or employment

How to apply:
Ucas: www.ucas.ac.uk (F/T)



This course provides opportunities for learners to develop attributes and techniques essential for successful managerial performance in differing hospitality sectors such as food and beverage, hotel and events management, patisserie, food development and retail.

Progression:

This programme produces graduates skilled in a broad range of specialist areas. Progression is through direct entry into the industry or through further study at HND top-up or degree level.

Assessment Methods:

The qualification is designed to cover various areas of the industry and students are assessed in a practical and theory-based environment.

The course covers topics such as:

- The Contemporary Hospitality Industry
- Finance in the Hospitality Industry
- Customer Service
- Marketing in Hospitality
- Contemporary Gastronomy.



Hospitality, Tourism and Sport

HOSPITALITY MANAGEMENT HIGHER NATIONAL DIPLOMA TOP-UP

About this Course:

The HND in Hospitality Management provides a specialist work related programme of study that covers the key knowledge, understanding and practical skills required in the hospitality industry and also offers particular specialist emphasis through the choice of specialist units. The qualification prepares learners for employment in the hospitality industry and is suitable for learners who have already decided that they wish to enter this area of work.

HND Diplomas provide a nationally recognised qualification offering career progression and professional development for those already in employment as well as opportunities to progress in higher education.

Programme Content:

- The Contemporary Hospitality Industry
- Managing the Customer Experience
- Professional Identity and Practice
- The Hospitality Business Toolkit
- Leadership and Management for Service Industries
- Managing Food and Beverage Operations
- International Gastronomy
- Work Experience
- Research Project (Pearson-set)
- Hospitality Consumer Behaviour and Insight
- Menu Development, Planning and Design
- Food Service Management
- Revenue Management
- Managing and Planning an Event
- Sales Management.

See module specifications for further information.

Entry Requirements:

- HNC or equivalent related Level 4 qualification
- Relevant work experience will be considered
- All applicants will require an initial assessment and interview.

Applicants should hold a total UCAS Tariff points score from relevant qualifications of at least 96 points (see page 6 for full details).

Please note: Students need to undertake a minimum of 80 hours work with an approved employer.

COURSE FACTS

Qualification obtained:
Higher National Diploma in
Hospitality Management

Awarding body:
Pearson

Course code:
TBC

UCAS code:
NN87

Attendance mode:
Full time/part time

Duration:
1 year full time
2 years part time

Start date:
September 2019

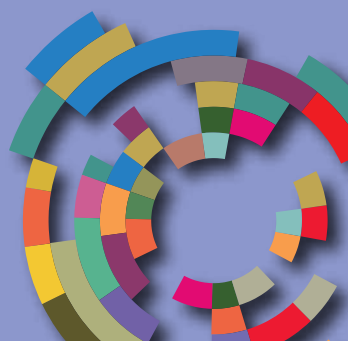
End date:
June 2020 full time
June 2021 part time

Fees:
£6,129

Number of places:
18

Progression:
Third year of degree-level
programme or employment

How to apply:
Ucas: www.ucas.ac.uk



Skills and Knowledge Developed:

HND Hospitality Management equips learners with the skills in a hospitality management context, including investigatory and research skills, focusing on management issues within the context of hospitality. This course provides opportunities for learners to develop attributes, and techniques essential for successful performance in working life within various sectors of the hospitality industry, such as licensed retail, food and beverage, hotel and events management.

On successful completion of the course the student will have developed skills in:

- Communication (oral, visual, written)
- Numeracy
- Problem solving
- Manage own workload
- Team work
- ICT, Human Resources and finance
- Research
- Self-evaluation and target setting.

Progression:

This programme produces graduates skilled in a broad range of specialist areas. Progression is through direct entry into the industry or through further study at degree level or HND top-up.

Teaching Methods:

- work related and based learning
- mixed modes of delivery
- tutor-led learning (lectures, with student interaction/discussion, class exercises and group work as appropriate to the topic)
- seminars (guided by the tutor but with significant student input)
- tutor-led workshops (practical sessions with student interaction)
- self-managed learning/research (outside timetabled sessions)

- VLE delivery and support (learning materials, exercises and reference documents are made available, as well as means of communication between students, tutors and support staff)
- IT and software available on campus as learning tools, such as Office 365 and One Note, to support blended learning
- self-directed learning and individual digital note books that can be accessed via smart phones
- mentoring sessions/tutorials (one-to-one with the tutor)
- reflective practice sessions - in group tutorials
- supported learning and resources available via the LRC.

Assessment Methods:

Assessment will predominantly be conducted through:

- a portfolio of documentary evidence of participation and the achievement of learning outcomes
- assignments based on case-study work (e.g. research essays)
- the production of reports, analyses and reflection
- presentation, both individually and in groups
- regular assessment of learning - including informal, formative assessment mid - semester and formal, summative assessment at the end of each semester
- development and delivery of a front of house event
- educational visits to Michelin Star Restaurants and other restaurant for critique of gastronomy (included in assignment).

Hospitality, Tourism and Sport

SPORT AND EXERCISE SCIENCE HIGHER NATIONAL CERTIFICATE

About this Course:

This Sport and Exercise Science HNC is designed to provide a foundation for anyone wishing to enter the field of sports exercise science and coaching and is geared towards a career in the fast growing sports industry. It aims to introduce students to the theory and application of sports exercise science and coaching in various environments.

A key part of the course is the coaching placement through which learners gain practical coaching experience. Specialist areas such as psychology of sports coaching, training fitness and testing, lifestyle coaching, coaching practice and skill development and sports massage as well as many other related subjects make this an exciting and worthwhile course.

Note: Students are required to purchase personal equipment e.g. clothing and books.

Entry Requirements:

4 GCSEs at grade C or above (must include English and preferably maths) and any of the following:

- A-levels
- BTEC national certificate or diploma
- NVQ Level 3 advanced diploma
- relevant Access qualification.

Relevant industrial experience may be considered for mature students. Equally important are the drive and determination to succeed, a good level of written English, and 'employability'.

All potential candidates are expected to attend an interview and will be assessed prior to enrolment onto the programme.

Applicants should hold a total UCAS Tariff points score from relevant qualifications of at least 96 points (see page 6 for full details).

Skills and Knowledge Developed:

You will be expected to undertake regular home study on this course.

COURSE FACTS

Qualification obtained:
Higher National Certificate in
Sport and Exercise Science

Awarding body:
Pearson

Course code:
VL420

UCAS code:
S935

Attendance mode:
Full time/part time

Duration:
1 year full time
2 years part time

Start date:
September 2019

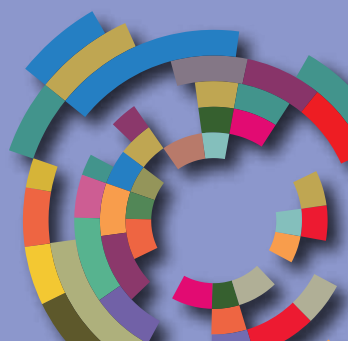
End date:
June 2020 full time
June 2021 part time

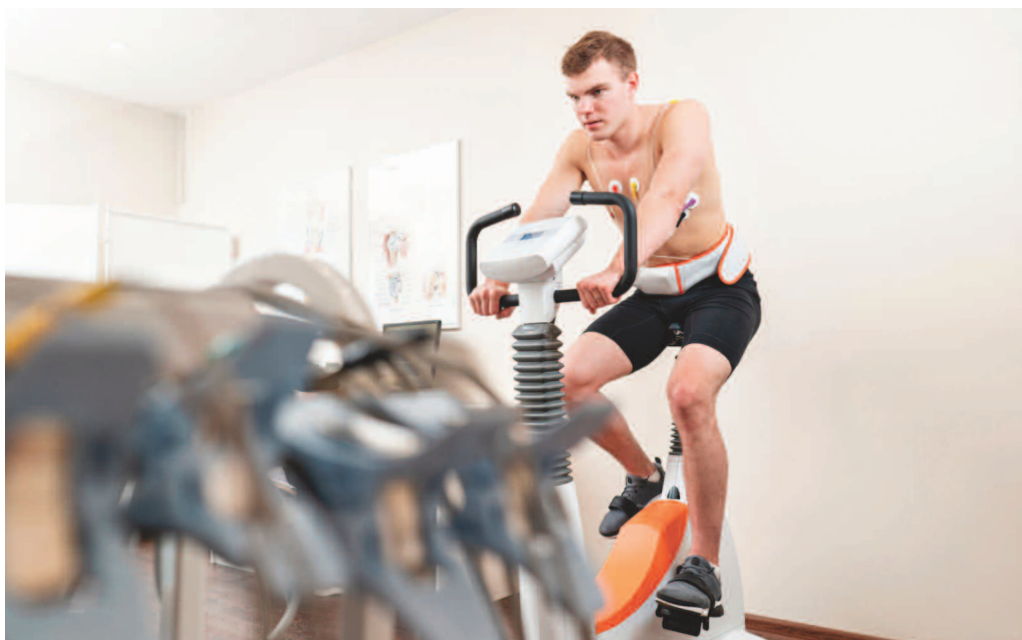
Fees:
£6,313 full-time

Number of places:
16

Progression:
Third year of degree-level
programme or employment

How to apply:
Ucas: www.ucas.ac.uk (F/T)





Progression:

This qualification prepares students for higher level careers in the sports and leisure industry.

Progression is through direct entry into the industry or through further study at HND top-up or degree level.

Teaching Methods:

Teaching and learning strategies within modules encourage and develop a range of learning styles. Students will have opportunities to actively assimilate, apply, question, debate and critically reflect upon the material presented within each module. Students will also experience a variety of assessment methods that measure achievement of learning outcomes and provide the best opportunities for students to show and demonstrate knowledge, skills and abilities.

The knowledge and skills acquired on the programme link directly to the vocational context and will diversify into a range of skills.

Teaching and Learning methods include lectures and seminars which underpin the practical style sessions.

Practical modules take place in the sports gym or outside with tutor support and guidance, and extra independent learning sessions are timetabled to allow access to specialist equipment and resources.

Content/modules studied:

- Coaching Practice and Skill Development
- Fundamentals of Sport and Exercise Psychology
- Professional Skills
- Training, Fitness, Testing
- Anatomy and Physiology
- Nutrition
- Sports Massage
- Lifestyle coaching.

Assessment Methods:

This course is continuously assessed using a range of methods, including course work, assignments and practical observations.

Hospitality, Tourism and Sport

SPORT AND EXERCISE SCIENCE HIGHER NATIONAL DIPLOMA TOP-UP

About this Course:

This HND in Sport and Exercise Science builds on previous experience and is designed for anyone wishing to enter the field of sports exercise science and coaching, and is geared towards a career in the fast growing sports industry and it also builds on the relationship between theory and the practical application of sports coaching.

A key part of the course is the application of theory which can be utilised throughout various coaching placements. Learners gain valuable, practical experiences in areas such as performance analysis, talent identification, sports rehabilitation and the application of sports coaching, which makes this an exciting and worthwhile course.

Note: Students are required to purchase personal equipment e.g. clothing and books.

Entry Requirements:

4 GCSEs at grade C or above (must include English and preferably maths) and any of the following:

- Completed HNC in Sport or equivalent Level 4 certificate of higher education.

Relevant industrial experience may be considered for mature students. Equally important are the drive and determination to succeed, a good level of written English, and 'employability'.

All potential candidates are expected to attend an interview and will be assessed prior to enrolment onto the programme.

Applicants should hold a total UCAS Tariff points score from relevant qualifications of at least 96 points (see page 6 for full details).

Skills and Knowledge Developed:

You will be expected to undertake regular home study on this course.

COURSE FACTS

Qualification obtained:
Higher National Diploma in
Sport and Exercise Science

Awarding body:
Pearson

Course code:
VL421

UCAS code:
S936

Attendance mode:
Full time/part time

Duration:
1 year full time
2 years part time

Start date:
September 2019

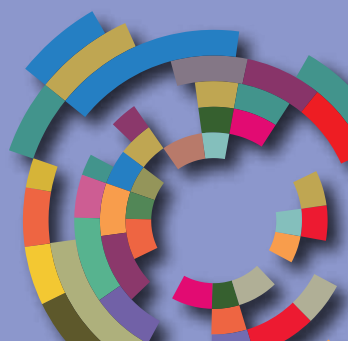
End date:
June 2020 full time
June 2021 part time

Fees:
£6,129 full-time

Number of places:
16

Progression:
Third year of degree-level
programme or employment

How to apply:
College: www.liv-coll.ac.uk
Ucas: www.ucas.ac.uk (F/T)



Progression:

This qualification prepares students for higher level careers in the sports and leisure industry.

Completing this course is the equivalent of completing the first two years of a degree, and successful students will have the opportunity to access the BA (Hons) in Sports Coaching Top-Up Degree programme offered at The City of Liverpool College.

Teaching Methods:

Teaching and learning strategies within modules encourage and develop a range of learning styles. Students will have opportunities to actively assimilate, apply, question, debate and critically reflect upon the material presented within each module. Students will also experience a variety of assessment methods that measure achievement of learning outcomes and provide the best opportunities for students to show and demonstrate knowledge, skills and abilities.

The knowledge and skills acquired on the programme link directly to the vocational context and will diversify into a range of skills.

Teaching and Learning methods include lectures and seminars which underpin the practical style sessions.

Practical modules take place in the sports gym or outside with tutor support and guidance, and extra independent learning sessions are timetabled to allow access to specialist equipment and resources.

Content/modules studied:

- Research Project
- Talent Identification & Development
- Work Experience
- Performance Analysis
- Advanced Coaching
- Sport Rehabilitation
- Teaching Practice.

Assessment Methods:

This course is continuously assessed using a range of methods, including course work, assignments and practical observations.



Hospitality, Tourism and Sport

SPORTS COACHING BA (HONS) TOP-UP

About this Course:

This programme covers sports coaching and current issues in sport, as well as other key areas such as sociology of sport and sport psychology. It provides a broad study within both the development and performance domains of sport. Applying theory to practice is essential for all students within the course. Students will also complete a research project and work experience within their chosen area of sport.

Entry Requirements:

- A minimum of 240 credits achieved through BTEC Level 5 HND in Sport with a maximum of 96 credits that may be either centre devised or imported from other BTEC; or
- A minimum of 240 credits achieved through Foundation Degree, Level 5 in a sport-related degree, with a minimum of 180 credits mapped against learning outcomes achieved through BTEC Level 5 HND in Sport
- Foundation Degree applicants must send over all Learning outcomes from their foundation degree, which will then be reviewed by the programme team and the Head of Higher Education before a decision to accept or reject is made.

Skills and Knowledge Developed:

Students will become critical thinkers within the world of sport, developing theoretical and practical knowledge to apply to sports coaching. Students will also develop key areas within the world of performance sport such as performance analysis, sport psychology and sports coaching. Students will develop skills in both qualitative and quantitative analysis and be able to effectively carry out research projects at a high level.

Progression:

This programme produces graduates skilled in a broad range of specialist areas. Progression is through direct entry into the industry or through further study at post graduate level.

COURSE FACTS

Qualification obtained:
BA Honours Degree in
Sports Coaching

Awarding body:
The Open University

Course code:
VL601

UCAS code:
CC61

Attendance mode:
Full time/part time

Duration:
1 year full time
2 years part time

Start date:
September 2019

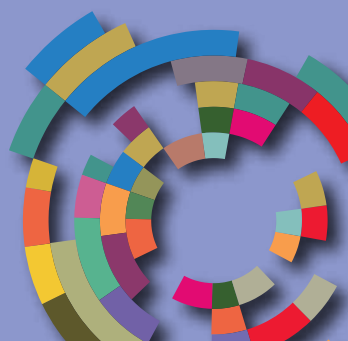
End date:
June 2020 full time
June 2021 part time

Fees:
£7,957

Number of places:
18

Progression:
Postgraduate programme or
employment

How to apply:
Ucas: www.ucas.ac.uk



Special Features:

Within the scheme, there is opportunity for learners to attain a level of professional practice. There are strong links to the professional football industry and within England Volleyball. There is further opportunity for designing and carrying out studies for both performance and community sport. There is also a range of links with both primary and secondary schools for coaching opportunities.

The programme has had input from coaches, performance analysts and other support practitioners working in a professional capacity at elite-level sport. This includes guest talks and visits to elite sport clubs and talks from a range of practitioners, including coaches, performance analysts and sport psychologists.

Teaching Methods:

Teaching and learning strategies within modules encourage and develop a range of learning styles. Students will have opportunities to actively assimilate, apply, question, debate and critically reflect upon the material presented within each module. Students will also experience a variety of assessment methods that measure achievement of learning outcomes and provide the best opportunities for students to show and demonstrate knowledge, skills and abilities.

The knowledge and skills acquired on the programme link directly to the vocational context and will diversify into a range of skills.

Teaching and Learning methods include lectures and seminars which underpin the practical style sessions.

Practical modules take place in the sports gym or outside with tutor support and guidance, and extra independent learning sessions are timetabled to allow access to specialist equipment and resources.



Assessment Methods:

The programme is assessed through submission of a coaching portfolio and sessions, written essays, reports, a series of project-based practical assessments, a final project, and the submission of a dissertation.

Formative feedback will support student progression in both written work and practical work. Self and peer assessment in critique situations will be an essential element of all projects and the feedback from these will enhance student achievement and progression.

Hospitality, Tourism and Sport

TOURISM AND LEISURE OR TOURISM, LEISURE AND HOSPITALITY FOUNDATION DEGREE

About this Course:

The rationale for foundation degrees centres on the 'thinking practitioner' by linking theory and practice to produce effective management and operational skills. The delivery of the modules reflect this.

The course is broad based and is designed to provide students with an understanding of, and the ability to, apply fundamental theories and concepts of tourism, leisure and hospitality. Specialist modules give the course particular focus leading to the achievement of one of the two foundation degrees available.

The modules studied will include the following -

Year 1:

- Professional Development 1
- Personal and Academic Development
- Consumer Behaviour
- Management Functions.

Year 2:

- Professional Development 2
- Research Methods
- Marketing
- Events Management.

In addition to this, specialist modules will be completed in each semester, depending upon pathway choice:

Tourism Pathway:

Year 1:

Special Interest Tourism; Impacts of Tourism in a Global Perspective.

Year 2:

Current Issues in Travel, Tourism and Aviation; International Tourism.
OR

Hospitality Pathway:

Year 1:

Health, Safety and Law in a Hospitality Context; Food Production Management.

Year 2:

International Food and Beverage Management; Revenue Management.

COURSE FACTS

Qualification obtained:

Foundation Degree in Tourism and Leisure and Foundation Degree in Tourism, Leisure and Hospitality

Awarding body:

Liverpool John Moores University (LJMU)

Course code:

VL401

UCAS code:

NN28 Tourism and Leisure
N225 Tourism, Leisure and Hospitality

Attendance mode:

Full time

Duration:

2 Years

Start date:

September 2019

End date:

May 2021

Fees:

£7,957

Number of places:

32

Progression:

BA (Hons) in Tourism Management or employment

How to apply:

Ucas: www.ucas.ac.uk (F/T)



Entry Requirements:

Four GCSEs at grade C or above (must include English and preferably maths) and any of the following:

- A-levels
- BTEC Level 3 Certificate or Diploma or equivalent/HNC
- NVQ level 3
- Advanced Diploma
- Access to HE (equivalent to 120 UCAS points).

NOTE: Relevant industrial experience may be considered for mature students. Equally important are the drive and determination to succeed, a good level of written English, and 'employability'.

Applicants should hold a total UCAS Tariff points score from relevant qualifications of at least 96 points (see page 6 for full details).

Skills and Knowledge:

- Key methods and concepts of social science theories related to tourism, leisure and hospitality
- Key strategies of management and marketing as applied to the tourism, leisure and hospitality industries
- The application of theoretical perspectives to practical situations in the workplace
- The production, supply and consumption of a range of services with respect to tourism, leisure and hospitality
- The theoretical perspectives and current practice regarding behaviour management
- Ethical, sustainable and legal practices within the tourism, leisure and hospitality industries
- The application of research in the chosen area
- Skills and other attributes - intellectual skills
- To integrate, evaluate and apply concepts from appropriate disciplines

- To develop a critical understanding of the tourism, leisure and hospitality industries
- To identify and solve problems individually and/or co-operatively
- To identify, analyse and interpret data from a wide range of sources
- To demonstrate reflective skills.

Progression:

Subject to availability of places within the university, successful completion of the Foundation Degree provides students wishing to study at degree level with progression to the third (final) year of the Liverpool John Moores University BA (Hons) in Tourism Management.

Please note: Students will be required to attend LJMU study skills sessions (critical thinking, writing a literature review, dissertation etc.) and will be interviewed prior to acceptance onto the Level 6 course.

Special Features:

Students regularly comment on the following aspects of the course:

Open door policy: One aspect that continues to be a strength of the course is the personal connection with the learners. Student feedback confirms that they appreciate the support from tutors, happy in the knowledge that they can approach the team for help at any time, and will get it.

Quality of teaching: Students enjoy the mix of interactive lessons and sessions with individualised targeted research. This approach helps students develop skills and the ability to achieve their Foundation Degree. A high level of students are motivated to pursue Honours degree level study on completion of this programme.

Excellent support: The team has incorporated more uniform mark sheets into module handbooks that enable a consistent and high level of feedback on marked work. This facilitates students learning from feedback and so helps continuous development in the quality of their work.

Teaching Methods:

The knowledge and skills acquired on the programme link directly to the vocational context and diversify into a range of skills required by the tourism and hospitality industries.

Teaching and Learning methods include formal lectures and seminars, which underpin the theoretical framework in which the sector operates. Also included: Lectures; tutor-led tutorials; small group activities; self-directed learning using research-based teaching materials and methods; problem-based learning scenarios; mentoring in the work environment; work-based learning. Students undertake managed activities within their own workplace and are expected to demonstrate reflection on their own practice, as applied to their own workplace.

Assessment Methods:

The programme is assessed through a variety of methods including: essays, formal reports, reflective critiques, individual presentations, a debate (Tourism and Leisure programme only - in year 1) and an exam (for the Tourism, Leisure and Hospitality programme only - in year 1).

Assessment of work-based learning is evidenced through the production of a self-reflective document, examining 'critical incidents' in depth. In a number of modules, the employer has 10% of the student's mark and gives individual feedback on a number of competencies: self-management and development; managing tasks; communicating clearly and effectively; working with and relating to others; applying initiative in work problems; the ability to meet learning outcomes.

The programme allows 120 credits at each level.



A female scientist with dark hair, wearing a white lab coat and clear safety goggles, is focused on her work. She is holding a blue pipette in her right hand, which is wearing a blue nitrile glove. The background is a blurred laboratory setting with various equipment and colorful test tubes in the foreground.

Mathematics and Science

Mathematics and science is a dynamic, evolving sector in the UK. Careers in this industry are expected to grow at double the rate of other occupations, creating 142,000 jobs in science, research, technology and engineering by 2023.

Graduates in these subjects are valued by employers for their analytical thinking and problem solving abilities, as well as their numeracy, technical or subject-specific skills. Studying maths or science can lead to many interesting and exciting careers, and a recent employers' survey revealed that STEM skills are also in high demand in non-STEM sector jobs, which puts these students at an advantage over other graduates.

Mathematics and Science

APPLIED SCIENCE: BIOLOGY HIGHER NATIONAL CERTIFICATE

About this Course:

The subject of Biology encompasses studies from the atomic to the planetary - or even extra-terrestrial scale. As such, you may be reluctant at an early stage in your biological career to limit your studies to a narrow field. The HNC level 4 qualification provides an excellent grounding in the key concepts and practical skills required for progressing onto further studies, such as a BSc, or into employment.

The modules covered on this course offer a wide variety of subjects extending from molecular and cellular biology to biodiversity, and cover all of the five kingdoms. With an emphasis on taught modules, delivered through a diverse range of methods that reflect the diversity of learners' needs and a high level of practical work, you will develop your technical, numerical and analytical skills.

You will study the following eight modules:

- Cell Biology
- Biochemistry of Macromolecules
- Ecological Principles and their Application
- Physiology of Cellular Systems in Animals
- Human Health and Nutrition
- Laboratory Techniques
- Personal and Professional Development
- Analysis of Scientific Data and Information.

Entry Requirements:

A suitable candidate will have a level 3 qualification or possess the equivalent of two A-level passes in the sciences - preferably biology and chemistry.

- Students need both GCSE English AND maths at grade C
- Non-standard entry students will always be considered and a variety of other life experiences can be taken into account
- Overseas students are considered on an individual basis
- We are looking for students with enthusiasm and a willingness to embrace new concepts and ideas.

Applicants should hold a total UCAS Tariff points score from relevant qualifications of at least 96 points (see page 6 for full details).

COURSE FACTS

Qualification obtained:
Higher National Certificate in
Applied Biology

Awarding body:
Pearson

Course code:
6M407

UCAS code:
C110

Attendance mode:
Full time/part time

Duration:
1 year full time
2 years part time

Start date:
September 2019

End date:
June 2020 full time
June 2021 part time

Fees:
£6,313 full-time
£3,157 part-time

Number of places:
18

Progression:
Second year degree level
programme or employment

How to apply:
College: www.liv-coll.ac.uk P/T
Ucas: www.ucas.ac.uk (F/T)



Skills and Knowledge Developed:

The programme aims to:

- Provide the appropriate knowledge and understanding required for the practice of biological science in the workplace
- Deliver the professional and practical skills and competencies which are required to gain employment within the science industry
- Develop technical, analytical, mathematical and evaluative skills
- Develop skills in communication, team work, problem solving and ITC
- Develop students' self-awareness and self-evaluation, with the emphasis on health and safety in the workplace environment
- Develop students as reflective practitioners, with an understanding of the need for the commitment to lifelong learning
- Provide a suitable basis for the progression to level 5.

Progression:

Although the emphasis of career development and employment through this nationally recognised course is clearly in the biological field, it is by no means exclusive as the many skills acquired may be applied to other areas such as commerce, management, teaching, etc. Direct progression on to a suitable HND or degree level study, or employment in the biological sciences is also possible.

Students may go on to careers in biomedical diagnostics, nutrition, laboratory analysis, research and development, ecological sciences, conservation, education and many other related areas.

Special Features:

Within the scheme, there is opportunity for students to attain a level of professional practice. Strong links with industrial laboratories facilitate industry-related briefs and real

scenarios that provide an opportunity for students to acquire professional work ethics, time planning skills and working within a professional science team. Learning is supported through a series of contextual visits.

Teaching Methods:

A variety of teaching methods are employed for the delivery of the course units. These include, tutorials, group work, research and presentations, practical experiments, visits, and ecological surveys. The different methods employed have been devised to promote your academic development and confidence as scientists. This is achieved through the development of not only your practical/technical skills, but also your mathematical, analytical, critical thinking and evaluative skills.

The delivery of teaching and the facilitation of learning has been designed to provide you with an appropriate level of stimulation and challenge in both your personal and academic development, which will be complemented by reflection upon your own learning and progression on the course.

Throughout the course, you are given the opportunity to discuss your progress regularly with your tutor.

Assessment Methods:

Assessment is in accordance with the current Assessment Regulations which operate within the Academic Framework. These are available for you to access via the VLE.

It is your responsibility to be familiar with and understand these regulations as they apply to all forms of assessment included in the programme.

Credit can only be awarded for assessed and demonstrated learning in relation to the learning outcomes of each module of study and the achievement of the standard required for award at each level. The methods of assessment to be used include research and presentation, reports and posters. You will not be assessed by examination.

Mathematics and Science

APPLIED SCIENCE: BIOLOGY HIGHER NATIONAL DIPLOMA TOP-UP

About this Course:

The subject of Biology encompasses studies from the atomic to the planetary - or even extra-terrestrial scale. As such you may be reluctant, at an early stage in your biological career, to limit your studies to a narrow field. The HND level 5 qualification provides an excellent grounding in the key concepts and practical skills required for progressing onto further studies, such as a BSc, or into employment.

The modules covered on this course offer a wide variety of subjects extending from molecular and cellular biology to biodiversity and cover all of the five kingdoms. With an emphasis on taught modules, delivered through a diverse range of methods that reflect the diversity of learners' needs and a high level of practical work, you will develop your technical, numerical and analytical skills.

You will study the following eight modules:

- Project for Applied Science
- Applied Genetics of Industry
- Agriculture and Medicine
- Statistics for Experimental Design
- Medical Microbiology
- Neurophysiology in Homeostatic Control of Human Body
- The Immune Response System
- Food Molecule Additives and their Role.

Entry Requirements:

A suitable candidate will have a level 4 qualification in a related subject or possess the equivalent of two A-level passes in the sciences - preferably biology and chemistry.

- Students need both GCSE English AND maths at grade C
- Non-standard entry students will always be considered and a variety of other life experiences can be taken into account
- Overseas students are considered on an individual basis
- We are looking for students with enthusiasm and a willingness to embrace new concepts and ideas.

Applicants should hold a total UCAS Tariff points score from relevant qualifications of at least 96 points (see page 6 for full details).

COURSE FACTS

Qualification obtained:
Higher National Diploma in
Applied Biology

Awarding body:
Pearson

Course code:
TBC

UCAS code:
C111

Attendance mode:
Full time/part time

Duration:
1 year full time
2 years part time

Start date:
September 2019

End date:
June 2020 full time
June 2021 part time

Fees:
£6,129 full-time
£3,065 part-time

Number of places:
18

Progression:
Degree level programme or
employment

How to apply:
College: www.liv-coll.ac.uk P/T
Ucas: www.ucas.ac.uk (F/T)



Skills and Knowledge Developed:

The programme aims to:

- Provide the appropriate knowledge and understanding required for the practice of biological science in the workplace
- Deliver the professional and practical skills and competencies which are required to gain employment within the science industry
- Develop technical, analytical, mathematical and evaluative skills
- Develop skills in communication, team work, problem solving and ITC
- Develop students' self-awareness and self-evaluation, with the emphasis on health and safety in the workplace environment
- Develop students as reflective practitioners, with an understanding of the need for the commitment to lifelong learning
- Provide a suitable basis for the progression to level 6.

Progression:

Although the emphasis of career development and employment through this nationally recognised course is clearly in the biological field, it is by no means exclusive as the many skills acquired may be applied to other areas such as commerce, management, teaching, etc. Direct progression on to a suitable BSc or employment in the biological sciences is also possible.

Students may go on to careers in biomedical diagnostics, nutrition, laboratory analysis, research and development, ecological sciences, conservation, education and many other related areas.

Special Features:

Within the scheme, there is opportunity for students to attain a level of professional practice. Strong links with industrial laboratories facilitate industry-related briefs and real scenarios that provide an opportunity for students to acquire professional work ethics,

time planning skills and working within a professional science team. Learning is supported through a series of contextual visits.

Teaching Methods:

A variety of teaching methods are employed for the delivery of the course units. These include, tutorials, group work, research and presentations, practical experiments, visits, and ecological surveys. The different methods employed have been devised to promote your academic development and confidence as scientists. This is achieved through the development of not only your practical/technical skills, but also your mathematical, analytical, critical thinking and evaluative skills.

The delivery of teaching and the facilitation of learning has been designed to provide you with an appropriate level of stimulation and challenge in both your personal and academic development, which will be complemented by reflection upon your own learning and progression on the course.

Throughout the course, you are given the opportunity to discuss your progress regularly with your tutor.

Students may go on to careers in biomedical diagnostics, nutrition, laboratory analysis, research and development, ecological sciences, conservation, education and many other related areas.

Assessment Methods:

Assessment on the HND is in accordance with the current Assessment Regulations which operate within the Academic Framework. These are available for you to access via the VLE.

It is your responsibility to be familiar with and understand these regulations as they apply to all forms of assessment included in the programme.

Credit can only be awarded for assessed and demonstrated learning in relation to the learning outcomes of each module of study and the achievement of the standard required for award at each level. The methods of assessment to be used include research and presentation, reports and posters. You will not be assessed by examination.

Mathematics and Science

APPLIED SCIENCE: CHEMISTRY HIGHER NATIONAL CERTIFICATE

About this Course:

The HNC in Chemistry (level 4) provides an excellent grounding in the key concepts and practical skills required for progressing onto further studies, such as a BSc, or into employment within the science industries.

You will study a total of nine 15 credit units which include five mandatory units:

- Inorganic
- Organic
- Physical
- Chemical Laboratory Techniques
- Analysis of Scientific Data and Information.

Plus two optional level 4 units:

- Industrial
- Material Science and Technology.

Entry Requirements:

- A2 qualifications, with a grade D in A2 Chemistry desirable
- BTEC Level 3 Extended Diploma MMM.

Applicants should hold a total UCAS Tariff points score from relevant qualifications of at least 96 points (see page 6 for full details).

Skills and Knowledge Developed:

The programme develops a deeper understanding of chemical principles at Level 4. Students will also become experienced in laboratory technician skills and have access to equipment such as infra-red and UV and HPLC flame spectroscopy.

Progression:

This programme produces science undergraduates skilled in a broad range of specialist areas. Progression is through direct entry into the industry or through further study at HND or degree level.

Special Features:

Within the scheme, there are opportunities for students to attain a level of professional practice in the laboratory as well as independent learning through individual project work. There are also opportunities to get involved with industry through the College's long established links with the sector.

COURSE FACTS

Qualification obtained:
Higher National Certificate in
Applied Chemistry

Awarding body:
Pearson

Course code:
6M408

UCAS code:
F110

Attendance mode:
Full time/part time

Duration:
1 year full time
2 years part time

Start date:
September 2019

End date:
June 2020 full time
June 2021 part time

Fees:
£6,129 full-time
£3,065 part-time

Number of places:
18

Progression:
Further study at university or
employment

How to apply:
College: www.liv-coll.ac.uk



Teaching Methods:

The knowledge and skills acquired on the programme link directly to the vocational context and diversify into a range of practical skills.

Teaching and learning methods include formal lectures and seminars - which underpin the chemical knowledge - and technical/practical workshop-style sessions.

Practical modules take place in a brand new multi-million pound suite of laboratories, with tutor support and guidance. Extra independent learning sessions are also timetabled to allow access to specialist equipment and resources.

Assessment Methods:

The programme is assessed through the submission of assignments for 16 units, including practical work, reports essays and an independent project.

Formative feedback will support student progression in both written work and technical outcomes. Self and peer assessment in convener/critique situations is an essential element of all projects and feedback from these will enhance student achievement and progression.



Mathematics and Science

APPLIED SCIENCE: CHEMISTRY HIGHER NATIONAL DIPLOMA TOP-UP

About this Course:

The HND in Chemistry (level 5) will build on your previous experience and provide an excellent grounding in the key concepts and practical skills required for progressing onto further studies, such as a BSc, or into employment within the science industries.

You will study a total of seven 15 credit units, all optional, and to include:

- Inorganic Chemistry of Crystal Structures and TM Complexes
- Organic Chemistry of Aromatic and Carbonyl Compounds
- Physical Chemistry of Spectroscopy, Surfaces and Chemical and Phase Equilibria
- Analytical Chemistry
- Project for Applied Science, Medicinal Chemistry and Employability Skills.

And two optional Level 5 units:

- Polymer Chemistry
- Personal and Professional Development.

Entry Requirements:

- A2 qualifications, with a grade D in A2 Chemistry desirable
- BTEC Level 3 Extended Diploma MMM
- Completed HNC in Chemistry or equivalent Level 4 certificate of higher education.

Applicants should hold a total UCAS Tariff points score from relevant qualifications of at least 96 points (see page 6 for full details).

Skills and Knowledge Developed:

The programme develops a deeper understanding of chemical principles at level 5. Students will also become experienced in laboratory technician skills and have access to equipment such as infra-red and UV and HPLC flame spectroscopy.

COURSE FACTS

Qualification obtained:
Higher National Diploma in Applied Chemistry

Awarding body:
Pearson

Course code:
6M402

UCAS code:
F111

Attendance mode:
Full time/part time

Duration:
1 year full time
2 years part time

Start date:
September 2019

End date:
June 2020 full time
June 2021 part time

Fees:
£6,129 full-time
£3,065 part-time

Number of places:
18

Progression:
Further study at university or employment

How to apply:
College: www.liv-coll.ac.uk



Teaching and learning methods include formal lectures and seminars - which underpin the chemical knowledge - and technical/practical workshop-style sessions.

Practical modules take place in a brand new multi-million pound suite of laboratories, with tutor support and guidance. Extra independent learning sessions are also timetabled to allow access to specialist equipment and resources.

Progression:

This programme produces science undergraduates skilled in a broad range of specialist areas. Progression is through direct entry into the industry or through further study at degree level.

Special Features:

Within the scheme, there are opportunities for students to attain a level of professional practice in the laboratory as well as independent learning through individual project work. There are also opportunities to get involved with industry through the College's long established links with the sector.

Teaching Methods:

The knowledge and skills acquired on the programme link directly to the vocational context and diversify into a range of practical skills. Teaching and learning methods include formal lectures and seminars - which underpin the chemical knowledge - and technical/practical workshop-style sessions.

Practical modules take place in a brand new multi-million pound suite of laboratories, with tutor support and guidance. Extra independent learning sessions are also timetabled to allow access to specialist equipment and resources.

Assessment Methods:

The programme is assessed through the submission of assignments, including practical work, reports essays and an independent project.

Formative feedback will support student progression in both written work and technical outcomes. Self and peer assessment in convener/critique situations is an essential element of all projects and feedback from these will enhance student achievement and progression.

Teaching and learning methods include formal lectures and seminars - which underpin the chemical knowledge - and technical/practical workshop-style sessions.

Students work on science research programmes with world-renowned Daresbury and Gatsby laboratories.

A full-page photograph of a female scientist in a laboratory. She is wearing a blue surgical cap, a blue face mask, and green lab scrubs. She is wearing white gloves and is using a white and black pipette to transfer a yellow liquid into a small vial. She is also looking through the eyepiece of a large, white and black compound microscope. The background is a bright, clean laboratory setting with other equipment and a clock visible on the wall.

Study takes place in multi-million pound STEM facilities



Media, Music and Performing Arts

The creative industries are the fastest growing part of the UK economy. In 2016, they generated £91.8bn gross value added for the British economy. With an estimated 286,000 jobs in music, performing and visual arts alone, overall, more than 3 million people were employed in the creative economy.

Media, Music and Performing Arts

MUSIC PRODUCTION HIGHER NATIONAL CERTIFICATE

About this Course:

Combined with the student's ambition, drive and talent, this Music Production HNC focuses on how to create and produce music products, with a strong emphasis on developing a range of commercial skills needed to work with new technology and concepts within the digital market place.

Students study the following units:

- Music Industry
- Marketing for Musicians and Promotion
- Professional Development
- Applied Sound Principles
- Recording Technology
- Creative Software Techniques
- Music for Sound and Pictures
- Composition Using Technology.

Entry Requirements:

BTEC Level 3 Extended Diploma at DMM or above or a minimum of 2 A-levels, including Music, at grade C or above.

Being a degree-level programme, students are expected to have a good level of knowledge of music production and, at interview, evidence that you are working towards or already have access to professional music production software/hardware. You must also be able to work with a high level of independence and keep to strict deadlines.

Applicants should hold a total UCAS Tariff points score from relevant qualifications of at least 96 points (see page 6 for full details).

Skills and Knowledge Developed:

Students will develop a wide range of technical and professional skills for production, composition, performance with technology, business, and research. Students are also supported to develop realistic and achievable career plans to help reach their goals within the industry.

COURSE FACTS

Qualification obtained:
Higher National Certificate in Music Production

Awarding body:
Pearson

Course code:
CP405

UCAS code:
4Q49

Attendance mode:
Full time/part time

Duration:
1 Year

Start date:
September 2019

End date:
June 2020 full time
June 2021 part time

Fees:
£6,313

Number of places:
15

Progression:
Second/third year degree level programme or employment

How to apply:
Ucas: www.ucas.ac.uk





Progression:

Upon successful completion of the programme, students can progress onto degree programmes or higher vocational qualifications such as a higher national diploma.

Special Features:

Within a few minutes' walk of Liverpool city centre, students are based at the College's Arts Centre - a creative hub for students studying music, performing arts, media, journalism, art, fashion and computing. Students have access to professional recording studios, computer suites and rehearsal facilities. Also located on this campus is the College's Apple Authorised Training Centre for Education (AATCe) and the Roland Music Academy.

Assessment:

Through a series of industry-driven projects and scenarios, this course equips students with a range of creative, commercial and personal skills to give them a competitive edge. The programme is assessed through submission of written essays, reports and a series of project-based practical assessments.

Formative feedback will support student progression in both written work and practical outcomes. Self and peer assessment is an essential element of all projects and the feedback from these will enhance student achievement and progression.

The programme allows 120 credits at each level.

Teaching Methods:

Teaching is focused around industry-driven projects and scenarios, enabling students to engage in both collaborative and individual work. Practical, oral and written work is undertaken to complete assessment of units. Students receive detailed feedback to aid development of knowledge, understanding and the power of expression. Problem-solving, communication, and being responsible for own learning are also key aspects of the teaching methods used throughout the course.

Media, Music and Performing Arts

MUSIC PRODUCTION HIGHER NATIONAL DIPLOMA TOP-UP

About this Course:

Combined with student's ambition, drive and talent, the HND in Music Production will further focus on how to create and produce music products, with a strong emphasis on developing a range of commercial skills needed to work with new technology and concepts within the digital market place.

Students study the following units:

- Creative Research Project
- Advanced Music Production
- Mixing and Mastering
- Sound Design Fundamentals
- Musicology
- Composing to a Brief
- A & R.

Entry Requirements:

- BTEC Level 3 Extended Diploma at DMM or above or a minimum of 2 A-levels, including Music, at grade C or above.
- Completed HNC in Music Production or equivalent Level 4 certificate of higher education.

Being a degree-level programme, students are expected to have a good level of knowledge of music production and, at interview, evidence that you are working towards or already have access to professional music production software/hardware. You must also be able to work with a high level of independence and keep to strict deadlines.

Applicants should hold a total UCAS Tariff points score from relevant qualifications of at least 96 points (see page 6 for full details).

Skills and Knowledge Developed:

Students will develop a wide range of technical and professional skills for production, composition, performance with technology, business, and research. Students are also supported to develop realistic and achievable career plans to help reach their goals within the industry.

COURSE FACTS

Qualification obtained:
Higher National Diploma in Music (Production)

Awarding body:
Pearson

Course code:
CM501

UCAS code:
4Q50

Attendance mode:
Full time/part time

Duration:
1 year full time
2 years part time

Start date:
September 2019

End date:
June 2020 full time
June 2021 part time

Fees:
£6,129

Number of places:
15

Progression:
Second/third year degree level programme or employment

How to apply:
Ucas: www.ucas.ac.uk





Progression:

Upon successful completion of the programme, students can potentially progress onto degree programmes or employment within the industry.

Special Features:

Within a few minutes' walk of Liverpool city centre, students are based at the college's Arts Centre - a creative hub for students studying music, performing arts, media, journalism, art, fashion and computing. Students have access to professional recording studios, computer suites and rehearsal facilities. Also located on this campus is the college's Apple Authorised Training Centre for Education (AATCe) and Roland Music Academy.

Teaching Methods:

Teaching is focused around industry-driven projects and scenarios, enabling students to engage in both collaborative and individual work. Practical, oral and written work is undertaken to complete assessment of units. Students receive detailed feedback to aid

development of knowledge, understanding and the power of expression. Problem-solving, communication, and being responsible for own learning are also key aspects of the teaching methods used throughout the course.

Assessment:

Through a series of industry-driven projects and scenarios, this course equips students with a range of creative, commercial and personal skills to give them a competitive edge. The programme is assessed through submission of written essays, reports and a series of project-based practical assessments.

Formative feedback will support student progression in both written work and practical outcomes. Self and peer assessment is an essential element of all projects and the feedback from these will enhance student achievement and progression.

The programme allows 120 credits at each level.

Media, Music and Performing Arts

PERFORMING ARTS (ACTING) HIGHER NATIONAL CERTIFICATE

About this Course:

This Performing Arts (Acting) HNC is suited to those determined to work within the sphere of the dramatic arts, providing them with opportunities to explore a wide range of different areas where they would like to progress in Drama.

The modules of specialist study, each taught by an experienced industry practitioner, include:

- Development of Acting Skills
- The Performing Arts Industry
- Acting for Camera
- Movement
- Final Major Performance.

Extra-Curricular activities/opportunities

There will be many opportunities to engage in practical and professional work through strong links with the local creative arts hub, which include links with local theatres, arts organisations, guest practitioners and working professionals.

Entry Requirements:

- Relevant level 3 qualification, A-level, BTEC or equivalent in an appropriate discipline
- GCSE English Language at grade C or above or equivalent
- National certificate or diploma at Merit standard, or a minimum of two A-levels at grade C or above.

We also welcome applications from those with relevant experience in lieu of the minimum entry requirements. Non-standard entry to courses will be at the discretion of the programme leader.

All applicants are given the opportunity to attend an audition, date of which is dependent on time of application.

Audition requirements for applicants include:

- A prepared contemporary or classical monologue of no more than three minutes in length

COURSE FACTS

Qualification obtained:
Higher National Certificate in Performing Arts (Acting)

Awarding body:
Pearson

Course code:
CP402

UCAS code:
104W

Attendance mode:
Full time/part time

Duration:
1 year full time
2 years part time

Start date:
September 2019

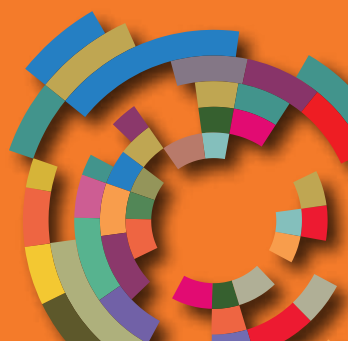
End date:
June 2020 full time
June 2021 part time

Fees:
£6,313

Number of places:
15

Progression:
BA Hons/drama school or employment

How to apply:
College: www.liv-coll.ac.uk
Ucas: www.ucas.ac.uk



- A five minute prepared presentation, demonstrating evidence of research, organisation and practiced delivery
- A formal Interview.

Alternatively, if applicants are unable to attend, we will view their work online. Recordings of performance/presentations are welcome (although attendance at audition is preferred) and in some cases, an interview can be carried out over the phone.

Applicants should hold a total UCAS Tariff points score from relevant qualifications of at least 96 points (see page 6 for full details).

Skills and Knowledge Developed:

The programme develops a deep understanding of the relationship between the actor, director, scriptwriter/deviser and the performance environment, by developing the student's ability to respond creatively to the needs of theatrical performance. Students are equipped with the skills necessary to translate a director's vision through the development, look and practical requirements of on-stage characters and performers, thereby providing back-story and insight into character.

The group will function and be treated as a professional ensemble theatre company and will learn and develop skills in creative collaboration, leadership, research and the formation and implementation of creative concepts.

The modules also deliver a theoretical, historical and cultural basis for the concepts explored, arming graduates with a fundamental basis and background of a wide range of theatrical and artistic forms.

Students receive a broad spectrum of insights into the permutations of the modern arts industry and are able to adapt to current and shifting trends. Students are treated as professionals, by professionals, and regular exposure to the local theatre culture will assist in developing up-to-date, cutting edge recognition and understanding of the requirements of the arts industry.

This will, in turn, help graduates demonstrate a high aesthetic, a strong skill set, a capacity to recognise occasions to exploit opportunities and a strong theoretical understanding of the principles of the arts industry.

Progression:

This programme produces graduates skilled in a broad range of specialist areas, and progression will be through direct entry into the industry or through further study at HND or degree level.

Special Features:

Within the scheme, there is opportunity for learners to attain a level of professional practice. Strong links to the creative industries and the acting and degree programmes will facilitate industry-related briefs and real scenarios that provide an opportunity for students to acquire professional work ethics, time planning skills and working within a creative team.

Learning is supported through a series of contextual visits, including local theatres, a variety of performances and project-specific research trips, which have previously included locations ranging from Portmeirion to Poland. Guest speakers and workshops with professional practitioners/companies are also scheduled into the programme.

Performances may take place in a variety of spaces, including studios, a college theatre and HD multi-camera TV studio, fully equipped for professional performance, local theatres and arts facilities, and site-specific locations.

Teaching Methods:

The knowledge and skills acquired on the programme link directly to the vocational context and will diversify into a range of skills and experience required for progression to HE study (BA Hons/drama school), as well as the performing arts industries. These include (but are not exclusive to) creative and conceptual project design and implementation, the self-employed acting profession, small and large scale touring theatres, drama therapy, workshop-based education, innovative performance production and business and enterprise competence.

Teaching and Learning methods include formal lectures and seminars which underpin the creative, technical and practical workshop-style sessions, with relevant theoretical, practitioner, historical and cultural reference.

Practical modules take place in the studio environment with tutor support and guidance, and with extra independent learning sessions also timetabled to allow access to the specialist equipment and resources.

Links with outside arts organisations and professionals allow for a greater range of professional contact and experiential learning.

Assessment Methods:

The programme is assessed through submission of written essays, evaluations, log books and presentations, as well as a series of project-based practical assessments, assessment of workshop and performance practice and a final professional performance project.

Formative feedback will support student progression in both written work and practical outcomes. Self and peer assessment in discussion/evaluation/critique situations is an essential element of all projects and the feedback from these will enhance student achievement and progression.

Assignment briefs contain a wide range of assessment criteria which is achieved through a variety of opportunities and a balance of written and practical assessment components.

Practice assignments will often be implemented and students will be kept appraised of working grades through feedback and contact with tutors.



Cultural organisations contribute £27bn to the UK economy and represent the fastest growth of any UK industry covered by the Department of Culture, Media and Sport, including cultural, digital and wider creative industries.



Media, Music and Performing Arts

PERFORMING ARTS (ACTING) HIGHER NATIONAL DIPLOMA (TOP-UP)

About this Course:

This HND in Performing Arts (Acting) builds on previous experience and is suited to potential students who are determined to work within the sphere of the dramatic arts, providing opportunities to explore a wide range of different areas where they would like to progress in Drama.

The modules are chosen to help prepare graduating students for the most likely destinations they choose to pursue, be that continuing their education, or finding work as a self-employed practitioner of performing arts.

The programme features specialist modules, delivered by staff with a wealth of professional experience in each subject area. These include:

- Working in the Performing Arts
- Classical Acting
- Voice and Speech for the Actor
- Vocal and speech for Actors
- Production Skills for Performance
- Theatre Directing
- Devising
- Research.

Entry Requirements:

A completed HNC or equivalent level 4 certificate of higher education or suitable experience in a relevant subject.

Audition requirements for applicants include:

- A prepared classical monologue (1590-1660) of no more than three minutes in length
- A five minute prepared presentation, demonstrating evidence of research, organisation and practiced delivery
- A formal Interview
- Participation in an improvised dramatic exercise.

Applicants should hold a total UCAS Tariff points score from relevant qualifications of at least 96 points (see page 6 for full details).

COURSE FACTS

Qualification obtained:
Higher National Diploma in Performing Arts (Acting)

Awarding body:
Pearson

Course code:
CM510

UCAS code:
105W

Attendance mode:
Full time/part time

Duration:
1 year full time
2 years part time

Start date:
September 2019

End date:
June 2020 full time
June 2021 part time

Fees:
£6,129

Number of places:
15

Progression:
BA Hons/drama school or employment

How to apply:
Ucas: www.ucas.ac.uk



Skills and Knowledge Developed:

The Ethos of the HND Acting course is one of company. Students will function as a member of a small theatre company and will develop the skills required by any successful modern theatre company. This includes learning the methodology of 'the company as director', where students are expected to self-direct a piece of theatre, with tutor support.

On successful completion of the course, students will be able to:

- demonstrate self-management, self-promotion and interpersonal skills necessary for successful employment and self-employment in the acting profession
- reflect on their own performance and identify further development needs or opportunities
- pursue further higher education or professional studies in relevant subject areas
- undertake professional performance commitments.

Transferable key skills/other attributes

On completion of the course, students will have had the opportunity to develop skills in:

- Communication (oral, visual, written)
- Problem solving
- Managing own workload
- Team work
- Research
- Self-evaluation and target setting.

Progression:

This programme produces graduates skilled in a broad range of specialist areas, and progression will be through further study at degree level or through direct entry into the industry. This course enables you to take on employment opportunities, not only as an actor but also in a variety of professional roles.

Special Features:

The programme is taught by contemporaneous industry members and a succession of guest lecturers.

Teaching Methods:

Knowledge and understanding will be acquired through the following range of approaches to module delivery:

- work related and based learning
- mixed modes of delivery:
 - tutor-led learning (lectures with student interaction/discussion, class exercises and group work, as appropriate to the topic)
 - seminars (guided by the tutor but with significant student input)
 - tutor-led workshops (practical sessions with student interaction)
 - student-led rehearsals (facilitated by the tutor)
 - self-managed learning/research (outside timetabled sessions)
 - VLE delivery and support (learning materials, exercises and reference documents are made available as well as means of communication between students, tutors and support staff)
 - self-directed learning (outside timetabled sessions, in studios or the LRC)
 - mentoring sessions/tutorials (one-to-one with the tutor)
 - reflective practice sessions (in group tutorials)
 - learning logs (in paper or electronic form, e.g. blogs)
 - learning agreements (e.g. work placement proposals)
 - supported learning and resources available via the LRC.

Assessment Methods:

Assessment will predominantly be conducted through:

- performances and accompanying rehearsal processes
- documentary evidence of participation and the achievement of learning outcomes
- assignments based on contemporary practice
- presentations, both individually and in groups
- evidence of learning in the workplace such as learning logs, reflective commentaries, completion of learning agreements/ proposals
- regular assessment of learning - including informal, formative assessment mid-semester and formal, summative assessment at the end of each semester
- reflection on work experience and performances.





Media, Music and Performing Arts

PERFORMING ARTS (DANCE) HIGHER NATIONAL CERTIFICATE

About this Course:

This HNC in Performing Arts (Dance) enables students to achieve a qualification at level 4, offering dance technique and performance training in contemporary, ballet, theatre jazz, and commercial from specialist tutors. Students will explore creativity and innovation through choreography and devise performances under the guidance of specialist practitioners. Students will perform for public audiences as their own dance company - EnHaNCeD Undergraduate Performance - in the College's own theatre, and at local and national dance events. The course aims to provide the essential professional and entrepreneurial skills to work as a freelance practitioner or facilitator within the creative arts industry.

Units covered:

- The Performing Arts Industry
- Professional Development
- Jazz Dance 1
- Ballet 1
- Contemporary 1
- Commercial Dance
- Choreography 1
- Devising Theatre and Performance.

Entry Requirements:

Four GCSEs at 'C' or equivalent plus two A2 or three AS levels (related subjects) or equivalent - e.g. BTEC level 3 Extended Diploma in Dance.

Applications from mature students will be considered on the basis of experience.

Applicants should hold a total UCAS Tariff points score from relevant qualifications of at least 96 points (see page 6 for full details).

COURSE FACTS

Qualification obtained:
Higher National Certificate in Performing Arts (Dance)

Awarding body:
Pearson

Course code:
CP404

UCAS code:
500W

Attendance mode:
1 year full time
2 years part time

Duration:
1 year

Start date:
September 2019

End date:
June 2020 full time
June 2021 part time

Fees:
£6,313 full-time

Number of places:
12

Progression:
Second/third year degree-level programme or employment

How to apply:
Ucas: www.ucas.ac.uk



Skills and Knowledge Developed:

The programme will develop an in-depth understanding of Dance and the possibilities of careers within the genre. Students are challenged about how to create dance performance and will work towards developing their own devised work; to be performed at the end of the programme year. Students will be equipped with the necessary skills to interpret a choreographer's artistic vision (using appropriate dance techniques), developing their individual and ensemble dance skills.

Alongside the many practical skills gained, students will develop self-management, self-promotion and interpersonal skills, whilst improving their reflective practice and evaluation skills. There will also be a number of transferable skills gained over the course of the qualification, in areas such as problem solving, numeracy, IT and communication.

Progression:

This programme produces graduates skilled in a broad range of specialist areas, progression will be through direct entry into the industry or through further study at degree level. Direct Entry onto HND Dance at The City of Liverpool College (CoLC) or equivalent institutions. Direct entry to industry through audition and employment.

HNC Dance students have gone on to study at Level 5 at CoLC, LJMU, LIPA, Edge Hill, Hope, Chester, Chichester, Roehampton, Middlesex, DMU, and Kingston universities, and Shock out Arts. Also Conservatoires: Laban; NSCD; LSCD.

Special Features:

Within the programme there are many opportunities for dancers to attain a level of professional practice through strong links to the creative industries: local dance companies, choreographers and performers and dance organisations. The programme will facilitate industry-related briefs and scenarios that

provide an opportunity for students to acquire professional work ethics, time planning skills and working within a creative team. Learning is supported through a series of professional workshops and training/performance opportunities, for example our own dance company EnHaNCeD Dance Company, CoLC Undergraduate Performance, Merseyside Dance Initiative, Leap International Dance Festival, International day of Dance, MOVEIT EXPO, and local and national artists and teachers.

Teaching Methods:

The knowledge and skills acquired on the programme link directly to the vocational context of the dance and associated creative industries. Teaching and Learning methods are studio led through practical exploration, assessment, target setting, discussion and some formal lectures and seminars, which underpin practical workshop sessions with relevant industry, historical and cultural reference. Practical modules take place in specialist studios with tutor support and guidance, and extra independent learning sessions are supported as essential to progression.

Assessment Methods:

The programme is assessed through a combination of performance and practical workshops, either in live performance or recorded. Academic work is assessed through vivas, presentations, research portfolios, evaluations and written assessments.

Formative feedback will support student progression in both written and practical. Self and peer assessment in convener/critique situations will be an essential element of all projects and the feedback from these will enhance student achievement and progression.

Media, Music and Performing Arts

PERFORMING ARTS (DANCE) HIGHER NATIONAL DIPLOMA TOP-UP

About this Course:

THE HND in Performing Arts (Dance) builds on previous experience and enables dancers to achieve a qualification at level 5, and to progress their technical and performance skills in essential studio practice of contemporary techniques, jazz dance and commercial dance. To progress their skills as choreographers, facilitators and future dance professionals, students will lead, manage and create work for the department's own EnHaNCeD Undergraduate Performance Company, with Level 4 students working as the ensemble company, in addition to performing themselves. Students will initiate projects, liaise with external agencies and deliver dance performance for a public audience in the College's own theatre and for local and national dance events and festivals. Students will gain essential academic knowledge of research in theory and practice methodologies appropriate for those wishing to complete post graduate study. They will also have an opportunity to develop their workshop leadership and teaching skills in a variety of community and schools settings, under the mentorship of experienced tutors.

Units Covered:

- Creative Research Project
- Working in the Performing Arts
- Jazz Dance 2
- Contemporary Dance 2
- Commercial Dance 2
- Physical Theatre
- Working in Creative Education.

Entry Requirements:

HNC in Performing Arts or equivalent level 4 higher education certificate, or relevant experience.

Applicants should hold a total UCAS Tariff points score from relevant qualifications of at least 96 points (see page 6 for full details).

COURSE FACTS

Qualification obtained:
Higher National Diploma in Performing Arts (Dance)

Awarding body:
Pearson

Course code:
CM997

UCAS code:
501W

Attendance mode:
Full time/part time

Duration:
1 year full time
2 years part time

Start date:
September 2019

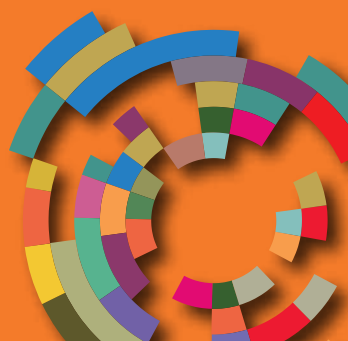
End date:
June 2020 full time
June 2021 part time

Fees:
£6,129

Number of places:
12

Progression:
Second/third year degree-level programme or employment

How to apply:
Ucas: www.ucas.ac.uk



Skills and Knowledge Developed:

The programme develops students' in-depth understanding of Dance and the possibilities within the genre. Students are challenged about how to direct and manage an ensemble of dancers in performance, EnHaNCeD Dance Company, and will collaborate with their peers and liaise with professional artists and organisations to progress work from its initial stages to final outcome. They will be equipped with the necessary skills to establish their own choreographic and artistic vision and to put this into practice.

Alongside the many practical skills gained, students will develop self-management, self-promotion and interpersonal skills whilst improving their reflective practice and evaluation skills. They will produce a small scale dissertation to feed directly into level 6 Degree level study. There will also be a number of transferable skills gained over the course of the qualification in areas such as problem solving, numeracy, IT and communication.

Progression:

This programme produces graduates skilled in a broad range of specialist areas. Progression is through direct entry onto Level 6 BA Hons Top Up in Performing Arts at The City of Liverpool College or an equivalent Level 6 programme at university/training school, or direct entry into industry through audition and employment.

Special Features:

Within the programme there will be numerous opportunities for learners to attain a level of professional practice. Strong links with community organisations, arts festivals and creative industries will facilitate industry-related briefs and real scenarios that provide an opportunity for students to acquire professional work ethics, time planning skills and networking opportunities. Learning is supported through a series of contextual visits, including London, where students will have the opportunity to visit trade fairs, participate in workshops and watch shows. There are also opportunities (through

our strong links with other arts organisations) to take part in workshops by leading practitioners and dance companies..

Teaching Methods:

The knowledge and skills acquired on the programme link directly to the vocational context of the dance and associated creative industries. Teaching and Learning methods are studio led through practical exploration, assessment, target setting, discussion and some formal lectures and seminars, which underpin practical workshop sessions with relevant industry, historical and cultural reference. Practical modules take place in specialist studios with tutor support and guidance, and extra independent learning sessions are supported as essential to progression.

Assessment Methods:

The programme is assessed through a combination of performance and practical workshops, either in live performance or recorded. Academic work is assessed through vivas, presentations, research portfolios, evaluations and written assessments.

Formative feedback supports student progression in both written and practical. Self and peer assessment in convener/critique situations is an essential element of all projects and the feedback from these will enhance student achievement and progression.



Media, Music and Performing Arts

PERFORMING ARTS (MUSICAL THEATRE) HIGHER NATIONAL CERTIFICATE

About this Course:

The HNC in Musical Theatre (Level 4) is a challenging and wide ranging course with the central aim of preparing students for higher education and employment in the musical theatre industry. Students will develop technical and performance skills in voice, dance and acting to become "Triple Threat" performers. They will perform for public audiences as their own musical Theatre Company - EnHaNCeD Undergraduate Performance - in the College's own theatre and at local events and promotions. This course is designed to give a strong grounding in professional musical theatre.

Units Covered:

- The Performing Arts Industry
- Professional Development
- Jazz Dance 1
- Acting 1
- Singing 1
- Musical Theatre History in Practice
- Vocal Repertoire
- Devising Theatre and Performance.

Entry Requirements:

4 GCSEs at 'C' or equivalent plus 2 A2 or 3 AS levels (related subjects) or equivalent, e.g. BTEC Level 3 Extended Diploma in Dance, Acting or Musical Theatre.

Applications from mature students are on the basis of experience.

Applicants should hold a total UCAS Tariff points score from relevant qualifications of at least 96 points (see page 6 for full details).

Skills and Knowledge Developed:

The programme will develop understanding of musical theatre and the possibilities within the genre. Students work towards performing a large scale musical at the end of the year for a public audience, in the College's own theatre.

COURSE FACTS

Qualification obtained:
Higher National Certificate in Performing Arts (Musical Theatre)

Awarding body:
Pearson

Course code:
CM503

UCAS code:
9FTL

Attendance mode:
Full time/part time

Duration:
1 year full time
2 years part time

Start date:
September 2019

End date:
June 2020 full time
June 2021 part time

Fees:
£6,313

Number of places:
18

Progression:
University, drama school or employment

How to apply:
Ucas: www.ucas.ac.uk (F/T)



As EnHanCed Undergraduate Performance Company, students will also deliver small scale cabaret performances, community showcases and provide entertainment at local events. They will also be equipped with the necessary skills to interpret songs (using appropriate vocal techniques), character development and acting techniques, as well as gain competence in musical theatre dance performance (jazz and contemporary dance).

Alongside the many practical skills gained, students will develop self-management, self-promotion and interpersonal skills, whilst improving their reflective practice and evaluation skills. There will also be a number of transferable skills gained over the course of the qualification in areas such as problem solving, numeracy, IT and communication.

Progression:

This programme produces graduates skilled in a broad range of specialist areas. Progression is through direct entry into the industry or through further study at degree level.

Direct Entry onto HND musical theatre at The City of Liverpool College (CoLC) or equivalent institutions.

Direct entry to Industry through audition and employment. HNC Musical Theatre students have gone on to study at Level 5 at CoLC, Edge Hill, LIPA, and Urdang.

Special Features:

Within the programme there are numerous opportunities for learners to attain a level of professional practice. Strong links with community organisations, arts festivals and creative industries will facilitate industry-related briefs and real scenarios that provide an opportunity for students to acquire professional work ethics, time planning skills and networking opportunities.

Learning is supported through a series of contextual visits, including London, where students will have the opportunity to visit trade fairs, participate in workshops and watch shows. There are also opportunities (through strong links with other arts organisations) to

take part in workshops by leading practitioners and drama schools.

Teaching Methods:

The knowledge and skills acquired on the programme link directly to the vocational context of the musical theatre and associated creative industries. Teaching and Learning methods are studio led through practical exploration, assessment, target setting, discussion and some formal lectures and seminars, which underpin practical workshop sessions with relevant industry, historical and cultural reference. Practical modules take place in specialist studios with tutor support and guidance and extra independent learning sessions that are supported as essential to progression.

Assessment Methods:

The programme is assessed through a combination of performance and practical workshops, either in live performance or recorded. Academic work is assessed through vivas, presentations, research portfolios, evaluations and written assessments.

Formative feedback will support student progression in both written and practical. Self and peer assessment in convenor/critique situations will be an essential element of all projects and the feedback from these will enhance student achievement and progression.



Media, Music and Performing Arts

PERFORMING ARTS (MUSICAL THEATRE) HIGHER NATIONAL DIPLOMA TOP-UP

About this Course:

The HND in Musical Theatre programme builds on the student's previous experience. It allows the building of singing, dancing and acting experience as well as develops the necessary skills required to stage, direct and perform. The programme offers students an opportunity to undertake major performance projects, learn advanced vocal techniques and apply acting skills in performance, as well as gain experience with dance/movement contextualised practice.

To progress their skills as performers, facilitators and future musical theatre professionals, students will lead, manage and create work for the department's own EnHaNCeD Undergraduate Performance Company, with the Level 4 students as the ensemble company, in addition to performing themselves. They will initiate projects, liaise with external agencies and deliver performance for a public audience in the College's own theatre and for local events and festivals. Students will gain essential academic knowledge of research in theory and practice methodologies, appropriate for those wishing to complete post graduate study. Students will also have an opportunity to develop workshop leadership and teaching skills in a variety of community and schools settings, under the mentorship of experienced tutors.

Units Covered:

- Creative Research Project
- Working in the Performing Arts
- Dance for Musical Theatre
- Physical Theatre
- Singing 2
- Acting 2
- Working in Creative Education.

Entry Requirements:

Four GCSEs at 'C' or equivalent plus two A2 or three AS levels (related subjects) or equivalent - e.g. BTEC level 3 Extended Diploma in Musical Theatre.

Higher National Certificate in Performing Arts or equivalent level 4 qualification, along with relevant experience.

COURSE FACTS

Qualification obtained:
Higher National Diploma in Performing Arts (Musical Theatre)

Awarding body:
Pearson

Course code:
TBC

UCAS code:
8FTL

Attendance mode:
Full-time/part time

Duration:
1 year full time
2 years part time

Start date:
September 2019

End date:
June 2020 full time
June 2021 part time

Fees:
£6,313

Number of places:
18

Progression:
University, drama school or employment

How to apply:
Ucas: www.ucas.ac.uk (F/T)



Applications from mature students will be considered on the basis of experience.

Applicants should hold a total UCAS Tariff points score from relevant qualifications of at least 96 points (see page 6 for full details).

Skills and Knowledge Developed:

The programme will develop students' in-depth understanding of musical theatre and the possibilities within the genre. Students are challenged in their perceptions of how to create performance and work towards developing their own directed musical, to be performed at the end of the programme. Students will also develop skills across a variety of dance styles and use these to inform their choreographic choices in their musical.

Within acting, students will gain a knowledge of the approaches of different practitioners and how to apply these to their work across the three disciplines. Alongside the many practical skills gained, students will develop self-management, self-promotion and interpersonal skills, whilst improving their reflective practice and evaluation skills. There will also be a number of transferable skills gained over the course of the qualification in areas such as problem solving, numeracy, IT and communication.

Progression:

This programme produces graduates skilled in a broad range of specialist areas. Progression is through direct entry into the industry or through further study at degree level.

Direct entry onto BA Hons Top up Degree in Performing Arts at The City of Liverpool College or equivalent institutions.

Direct entry to Industry through audition and employment. HND musical theatre students have gone on to study at Level 6 or into employment.

Special Features:

Within the programme there are many opportunities for learners to attain a level of professional practice. Strong links with community organisations, arts festivals and creative industries will facilitate industry-related briefs and real scenarios that provide a chance for students to acquire professional work ethics, time planning skills and networking opportunities. Learning is supported through a series of contextual visits, including London, where students will have the opportunity to visit trade fairs, participate in workshops and watch shows. There are also opportunities (through strong links with other arts organisations) to take part in workshops by leading practitioners and companies.

Teaching Methods:

The knowledge and skills acquired on the programme link directly to the vocational context of the musical theatre and associated creative industries. Teaching and Learning methods are studio led through practical exploration, assessment, target setting, discussion and some formal lectures and seminars, which underpin practical workshop sessions with relevant industry, historical and cultural reference. Practical modules take place in specialist studios with tutor support and guidance, and extra independent learning sessions are supported as essential to progression.

Assessment Methods:

The programme is assessed through a combination of performance and practical workshops, either in live performance or recorded. Academic work is assessed through vivas, presentations, research portfolios, evaluations and written assessments. Formative feedback will support student progression in both written and practical. Self and peer assessment in convenor/critique situations are an essential element of all projects and the feedback from these will enhance student achievement and progression.

Media, Music and Performing Arts

PERFORMING ARTS (ACTING/DANCE/MUSICAL THEATRE) BA (HONS) TOP-UP

About this Course:

This top-up Honours degree offers students a unique opportunity to study in a small group and explores the core elements of theatre practice in the performing arts. The course allows students to immerse themselves in all aspects of training, exploring cutting edge performances and practitioners and enabling them to find their niche in the creative arts. Building upon their skills and knowledge, they will be challenged to create something radically different using their own artistic vision, to become a bold and autonomous practitioner.

Modules include:

- The Versatile Performer - Techniques and Practice
- The Mirror Up To Nature - Reflecting Radical Artists
- The Art of Self Expression through Performance (Drama Pathway only)
- Dance in the Digital Age (Dance Pathway Only)
- The Triple Threat - Contemporary Musical Theatre (Musical Theatre only)
- Pop Up Festival Project
- Final Major Performance/Dissertation.

Entry Requirements:

Four GCSEs at 'C' or equivalent plus two A2 or three AS levels (related subjects) or equivalent - e.g. BTEC level 3 Extended Diploma in Dance.

Direct Applications to Year 2 - Higher National Diploma in Performing Arts or equivalent level 5 qualification with relevant experience.

Applications from mature students will be considered on the basis of experience.

Applicants should hold a total UCAS Tariff points score from relevant qualifications of at least 96 points (see page 6 for full details).

COURSE FACTS

Qualification obtained:
BA Honours Degree in Performing Arts

Awarding body:
The Open University

Course code:
TBC

UCAS code:
10FT

Attendance mode:
Full time/part time

Duration:
1 year full time
2 years part time

Start date:
September 2019

End date:
June 2020 full time
June 2021 part time

Fees:
£7,957

Number of places:
20

Progression:
Employment, postgraduate study or teacher education

How to apply:
Ucas: www.ucas.ac.uk



Skills and Knowledge Developed:

This programme develops the level and application of specialist skills and knowledge required in the Performing Arts profession, along with a critical understanding of issues relating to the study of Acting, Dance and Musical Theatre. Students build on their own particular area(s) of expertise in assignment-based and project-based work. Students also develop their intellectual, critical writing and research skills appropriate to an Honours level programme, through assignment work and the option of creating a Final Major Performance for a public audience or writing a dissertation.

Progression:

This programme will produce graduates skilled in a range of specialist areas. Progression will be direct entry into the Performing Arts profession (Actor, Dancer or MT performer), working as a freelance artist in a variety of settings (Director, Choreographer, Workshop Facilitator etc.) or through further study at postgraduate level, including teacher training.

Special Features:

A key feature of the programme is work-related learning, not only in the area of employability but also self-employment, enterprise and entrepreneurship. The current Performing Arts profession is diverse and somewhat fragmented and is increasingly dependent upon self-employed practitioners providing specialist services and products. This programme encourages and supports students in the development and application of their marketing, management and creative production skills (in the Pop up Festival and Independent Performance modules) and the application of their Musical, Dance or Acting skills and knowledge of the profession in specialist project modules.

It encourages a holistic approach to the training of performing arts professionals by encouraging transferable learning across a wide range of work related contexts to enable them to pursue sustainable careers

Teaching Methods:

Tutor led - Lecture and Seminar.

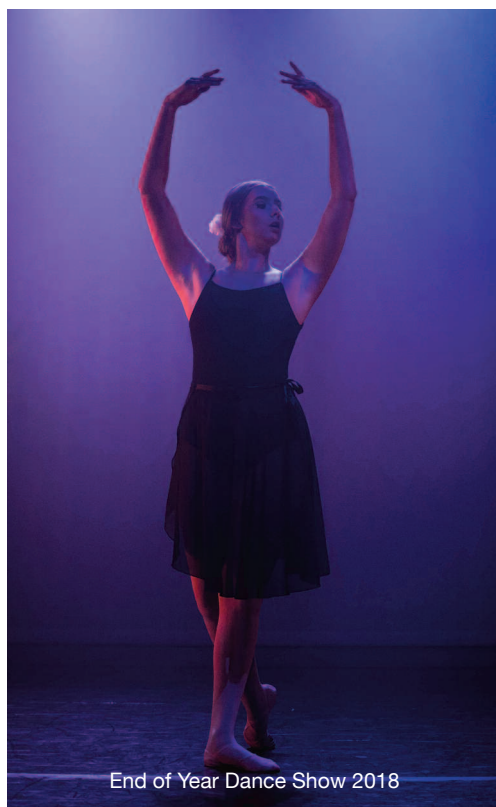
Online/blended delivery using the VLE or other online resources.

Self-directed and independent learning with tutorial support, particularly for the Final Major Project module

Assessment Methods:

The programme is assessed through project or performance based practical assessments, the submission of written essays, critical evaluations and logs/blogs, and a final project or the submission of a dissertation.

Formative feedback will support student progression in both written work and practical outcomes. Self and/or peer assessment in convener/critique situations.



Media, Music and Performing Arts

POPULAR MUSIC FOUNDATION DEGREE

About this Course:

The Foundation Degree in Popular Music specialises in popular music and its professional application and includes a work placement underpinned by an agreement drawn up between the student, the placement employer and the College.

Level 4 Modules:

- Music Theory and Keyboard Skills (20 credits)
- Practical Musicianship 1 (20 credits)
- Studying Popular Music 1 (20 credits)
- Sequencing/Notation Software and Composition (20 credits)
- Practical Musicianship 2 (20 credits)
- Music in the Community and Education (20 credits).

Level 5 Modules:

- Advanced Harmony and Arranging (20 credits)
- Advanced Practical Musicianship (20 credits)
- Studying Popular Music 2 (20 credits)
- Developing Professional Practice (including work placement) (20 credits)
- Performance Project (20 credits)
- Session Styles and Recording (20 credits).

Work-based learning is provided as the major element of Music in the Community and Education (20 credits) and Developing Professional Practice (20 credits). In addition, Performance Project (20 credits) culminates in a public performance in a professional venue and Session Styles and Recording (20 credits) is delivered in the College's professional standard studios, to closely replicate working practices. Other modules such as Sequencing/Notation Software and Composition (20 credits) are work-related, with industry-relevant assignment briefs and delivered using industry standard software.

Entry Requirements:

Indicative requirements: DMM grade profile (BTEC Level 3 Extended Diploma) or M grade (RSL Extended Diploma) in subjects including music.

COURSE FACTS

Qualification obtained:
Foundation Degree in Popular Music

Awarding body:
The Open University

Course code:
CP401

UCAS code:
W341

Attendance mode:
Full-time

Duration:
2 years

Start date:
September 2019

End date:
June 2021

Fees:
£7,957

Number of places:
18

Progression:
Third year honours degree programme or employment

How to apply:
Ucas: www.ucas.ac.uk



A good level of competence on an instrument or voice (around grade 6 ABRSM, Rockschoo! or equivalent) and a good basic grounding in music theory (preferably around grade 5). All applicants will be auditioned and assessed on their theory knowledge (a sample paper will be sent when invited for audition).

Appropriately experienced applicants will be considered, in line with the Open University's APEL/Credit Transfer guidelines and the College's APL procedure, which considers individual cases on merit at the interview/audition stage.

Skills and Knowledge Developed:

The course is designed to develop specialist knowledge and skills in music performance, composition and arranging to a high level, which can then be applied in the music industry and in other contexts such as education and music in the community. The course also develops the skills and knowledge involved in the academic study of popular music in its historical and cultural contexts, to provide a wider and deeper understanding of the subject and as preparation for further study (at Level 6 and above) or music teaching.

Progression:

For those students wishing to continue their HE studies in music, it is possible - subject to individual assessment - to complete a BA (Hons) Popular Music degree by studying the final year of this programme (level 6) at the College.

Special Features:

A key special feature of the programme is work experience and work-related learning. Students undertake a short (up to 4 hours) assessed group community music project in level 4, and an individual assessed work experience placement or work-related project of 70 hours in total in level 5. In both cases, the learning outcomes are clearly identified but can be achieved in a wide range of ways to allow flexibility for the diversity of students and modes of music-related employment, and the 70-hour

placement may be organised in any way that is convenient for the student and provider (one day a week in a school over 12 weeks, for example). Due to the main (level 5) work experience placement being in semester 2, during semester 1 of level 5, students will be given guidance and preparation time in finding a suitable placement during tutorial sessions, making use of existing college partnerships and staff contacts, where necessary. An alternative work-related project may be considered, as long as it is of a professional nature, meets the 70-hour requirement and can be documented sufficiently.

Other special features of this programme that, together, make it unique in Merseyside at this level are:

- the breadth of knowledge and skills covered (performance, music theory, composition, keyboard skills, community music, etc.)
- a holistic approach to the training of future music professionals by encouraging transferable learning across a wide range of work-related contexts, to enable them to pursue sustainable careers
- the balance between theory and practical work across and within modules
- weekly group and individual tutorials throughout the programme with an allocated personal tutor to support each student in academic, professional development and pastoral matters
- a small cohort benefitting from small class sizes, and timetabling designed to enable students to continue with family or work commitments whilst studying
- the use of real-world briefs and the department's links with venues and music companies around the city (such as The Lantern Theatre, Crosstown Studios, Urban Strawberry Lunch and Aintree Music School) and further afield (internationally)
- regular workshops and master-classes given by local, national and international visiting speakers and artists (recent examples being Benn Clatworthy, Daniel John Martin and Bill Connor).

Teaching Methods:

Teaching methods vary depending on the module and subject taught, and include classroom activities, seminars, practical sessions in studios and rehearsal rooms, and workshops (which may occasionally be delivered by visiting music professionals).

There is a strong vocational element to most of the teaching and learning, with some of the learning taking place in the workplace (when on placements). Many activities and assignments are designed to be as 'real world' as possible to reflect the requirements of the music profession.

Assessment Methods:

Assessment methods vary according to the nature of each module. There is some written work required for most modules, which could be in the form of a report or essay, or a different form of written assignment such as a presentation or musical composition or arrangement. The more practical modules may require you to keep a log of your activities, and there are periodic exams in music theory and solo performance.

Assessment dates and deadlines are given at the beginning of the academic year, and you will be provided with written and verbal feedback within an agreed period, and as soon as possible after each assessment.





'Liverpool is the UNESCO City of Music'

Media, Music and Performing Arts

POPULAR MUSIC AND MUSIC PRODUCTION BA (HONS) TOP-UP

About this Course:

About this Course: This programme is a direct progression route for students successfully completing the Foundation Degree in Popular Music - or similar Level 5 programme in Music Production. It is designed to allow students the opportunity to build on knowledge and skills acquired and specialise in a chosen area such as performance, composition or research, in order to investigate contemporary issues in music, as well as develop themselves professionally.

A key special feature of the programme is work-related learning, not only in the area of employability but also self-employment, enterprise and entrepreneurship.

Entry Requirements:

Indicative requirements:

- Level 5 qualification in Music, Popular Music or Music Production (e.g. Foundation Degree or HND)
- A high level of competence on an instrument or voice (around grade 8 ABRSM, Rockschoo or equivalent) and a good understanding of music theory. A high level of Music production processes and techniques must be shown for production students.
- All applicants will be auditioned and assessed on their theory knowledge (a sample paper will be sent when invited for audition). Production students will sit diagnostic tests to assess their level.
- Applicants with appropriate prior learning, or those who can demonstrate that they have achieved all learning outcomes required for the College's Foundation Degree in Popular Music or Music Production at Level 5, will be considered.

Applicants without any of the above may be considered on the basis of previously achieved certificated learning, experiential learning and/or work-related experience. Suitably qualified applicants who are not at the levels of music performance, theory or music production skills indicated above, will be asked to provide marked examples of their Level 5 academic work. If this is of sufficient quality, a place will be offered, on the understanding that they should opt to specialise in an area not involving performance or score writing.

COURSE FACTS

Qualification obtained:

BA Honours Degree in Popular Music and Music Production

Awarding body:

The Open University

Course code:

CM502

UCAS code:

WW33

Attendance mode:

Full time/part time blended learning

Duration:

1 year full time
2 years part time

Start date:

September 2019

End date:

June 2020 full time
June 2021 part time

Fees:

£7,957

Number of places:

12

Progression:

Possible progression to postgraduate study, teacher training, or employment

How to apply:

College: www.liv-coll.ac.uk



Skills and Knowledge Developed:

This programme develops the level and application of specialist skills and knowledge required in the music and the music production profession, along with a critical understanding of issues relating to the study of popular music or music production. Students build on their own particular area(s) of expertise in fields such as performance, composition, production, or research in assignment-based and project-based work. Additionally, all students develop their intellectual, critical writing and research skills, appropriate to an Honours level programme, through assignment work (in the Contemporary Issues in Music module) and with the option of writing a dissertation or producing a profession artefact (EP).

Progression:

This programme produces graduates skilled in a range of specialist areas. Progression is through direct entry into the music profession or through further study at postgraduate level, including teacher training.

Special Features:

A key special feature of the programme is work-related learning, not only in the area of employability but also self-employment, enterprise and entrepreneurship. The current music profession is diverse and somewhat fragmented, and the music industries are (as are the creative industries in general) increasingly dependent on Small to Medium sized enterprises/businesses (SMEs) and self-employed practitioners providing specialist services and products.

This programme encourages and supports students in the development and application of their self-promotion skills (in the Professional Portfolio and Professional Practice modules) and the application of their musical skills or production skills and knowledge to chosen area(s) of the profession (in the Specialist Project and Project Realisation/Dissertation modules).

Other special features of this programme that, together, make it unique in Merseyside at this level are:

- the breadth of knowledge and skills covered (performance, composition, arranging, enterprise and entrepreneurship, etc.)
- a holistic approach to the training of music and production professionals by encouraging transferable learning across a wide range of work-related contexts, to enable them to pursue sustainable careers
- the balance between theory and practical work across modules (particularly in semester 1)
- regular tutorials throughout the programme, with an allocated personal tutor to support each student in academic, professional development and pastoral matters
- a small cohort, benefitting from small class sizes and timetabling designed to enable students to continue with family or work commitments whilst studying
- the use of real-world briefs and the department's links with venues, record labels, music festivals, music distribution companies, music management and music brands around the city (such as The Lantern Theatre, Crosstown Studios, Urban Strawberry Lunch, Sound City, Threshold Festival, The Vocal Booth, Aintree Music School, Kooky music, Hocus Pocus, Paper Recordings and a host of boutique club nights and events) and further afield (internationally)
- regular workshops and masterclasses given by local, national and international visiting speakers and artists (recent examples being Benn Clatworthy, Daniel John Martin and Bill Connor). Industry day has also enabled us to showcase master classes from Steve Levine, Kinnerman, PRS and Ad Lib audio.

The staffing for this programme, consists of people with recent and current industry experience across a wide range of music environments as well as scholarly activity.



This valuable mix of experience and knowledge ensures students receive relevant, recent and up-to-date skills which position them effectively for employment, self-employment or progression to postgraduate study.

The city centre location of the Arts Centre adds further impact to the programme as it is in a key physical position to link in with new and established city centre businesses, as well as being close to other college services such as the LRC and nursery and other HEIs.

Teaching Methods:

Teaching methods vary according to the subject and type of module being delivered, but include tutor-led learning such as lectures, seminars involving a high level of student interaction, practical sessions overseen by a tutor but led by students, and online/blended delivery using the VLE or other online resources.

Being a Level 6 programme there is an expectation of a high level of self-directed and independent learning, with tutorial support, particularly for the Major Individual Project module. Students choosing an education or community music project will be expected to liaise closely with a suitable organisation/client in the planning, preparation and delivery of their project, and students choosing performance or projects involving recording are expected to similarly liaise with fellow musicians and technicians/engineers.

In all teaching methods, students with identified learning or language needs will be offered support, and learning materials will be adapted wherever possible - e.g. hand-outs enlarged or

printed on coloured paper for dyslexic students. Teaching, assessment and other information is provided in module handbooks (printed and available on the student VLE), with additional information provided in programme and The City of Liverpool College Higher Education student handbooks.

Assessment Methods:

The programme is assessed through the submission of written essays, critical evaluations and logs/blogs, project or performance-based practical assessments and a final project - or the submission of a dissertation. For production students this is also the case plus Studio project files, wavs/ aiffs, videos, blogs, masters and professional artefacts will be assessed.

Formative feedback will support student progression in both written work and practical outcomes. Self and/or peer assessment in convener/critique situations will be an element of all projects and the feedback from these will enhance student achievement and progression. Assessment methods will vary according to the nature of the module and learning outcomes being assessed.

Students with identified learning needs may, on the advice of support staff, be given deadline extensions, extra time to complete exams or alternative assessments, where appropriate, and where the learning outcomes being assessed can be measured fairly. We aim to provide written (and where possible, verbal) feedback within 3 working weeks, and use e-submission (via Turnitin for written assignments), where possible.

The programme is worth 120 credits at Level 6.

Social Science and Business

Studying business will equip you with a set of transferable skills that allow you to access opportunities in a range of industries. You will develop a broad knowledge of how businesses operate including understanding the customer, markets, finance, operations, marketing, strategy, human resources, accounting, policy, communications and IT.

Social Science and Business

BUSINESS HIGHER NATIONAL CERTIFICATE

About this Course:

The HNC in Business has been developed to focus on providing education and training for a range of careers in business, such as management, administration, personnel, marketing, accounting and law, as well as providing a general qualification which allows flexibility of study to meet local or specialist needs.

The core units studied are:

- Business Environment
- Marketing Essentials
- Human Resource Management
- Management and Operations
- Management Accounting
- Managing a Successful Business Project.

The two optional units studied are:

- Entrepreneurship and Small Business Management
- Financial Accounting.

Entry Requirements:

Full level 3 qualification (A-level or BTEC or equivalent) in relevant subject area or sufficient work experience in business administration and finance (must produce evidence of this).

Applicants will be interviewed and will sit an initial assessment test. Candidates applying for an apprenticeship route need to be in employment.

Applicants should hold a total UCAS Tariff points score from relevant qualifications of at least 96 points (see page 6 for full details).

Skills and Knowledge Developed:

Higher Nationals in Business have been developed to focus on:

- providing education and training for a range of careers in business such as management, administration, personnel, marketing, accounting and law
- providing a general qualification which allows flexibility of study to meet local or specialist needs

COURSE FACTS

Qualification obtained:
Higher National Certificate in Business

Awarding body:
Pearson

Course code:
6B401 full-time
6B499 part time

UCAS code:
N100

Attendance mode:
Full time/part time

Duration:
1 year full time
2 years part time

Start date:
September 2019

End date:
June 2020 full time
June 2021 part time

Fees:
£6,313 full-time
£3,157 part-time

Number of places:
18

Progression:
HND business or employment

How to apply:
College: www.liv-coll.ac.uk



- providing specialist options which meet the needs of the major functions in business and allow specialisation with career progression and professional recognition in mind.

Progression:

The BTEC higher national is a strong foundation for learners continuing to university to complete a degree. The level of independent research and critical thinking, as well as the assessment methodology, helps to prepare learners for university. Although the certificate is broadly equivalent to the first year of an undergraduate degree, and the diploma is broadly equivalent to the second year of this degree, the entry point for a higher national learner to a degree is at the discretion of the higher education institution.

Special Features:

Higher nationals are designed to provide a specialist vocational programme, linked to professional body requirements and National Occupational Standards, where appropriate. They offer a strong, sector-related emphasis on practical skills development alongside the development of requisite knowledge and understanding. The qualifications provide a thorough grounding in the key concepts and practical skills required in their sector and their national recognition by employers allows direct progression to employment.

Teaching Methods:

A strong commitment to the course is essential to succeeding in your HNC in Business. The student will use the HN Online platform which provides a range of online teaching resources such as lectures, videos and exercises to help the student understand the course content. The platform also gives the student the opportunity to interact with tutors and fellow students in an online community environment. This will be fully supported by weekly taught sessions.

There is an expectation of all students to complete further additional work outside the classroom, whether of a research nature or on time spent in the workplace. Commitment therefore will consist of:

- attending all taught sessions and fully engaging in the range of activities planned for your learning
- completing all tasks and activities during the modules to best prepare for the end of unit assessments, which are the ones to determine success or not
- further reading around the core topics, and an exposure to real-world application of the content of modules, drawing upon any work-based experience or general life experiences
- key organisational skills - from the first week students should ensure they are on top of notes etc. - healthy notes make for healthy study
- familiarisation with the Learning Resource Centre in the College and the range of resources available - students are provided with reading lists and further sources of information. There is a range of textbooks available for students to use throughout their studies.

Assessment Methods:

The programme is assessed through the submission of written essays, reports and reflective logs and a series of project-based practical work-based assessments.

Formative feedback will support student progression in both written work and business outcomes.

Self and peer assessment in convener/critique situations will be an essential element of all projects and the feedback from these will enhance student achievement and progression.

The programme allows 120 credits at each level.

Social Science and Business

BUSINESS

HIGHER NATIONAL DIPLOMA TOP-UP

About this Course:

The course has been developed to focus on providing education and training for a range of careers in business such as management, administration, personnel, marketing, accounting and law, as well as providing a general qualification which allows flexibility of study to meet local or specialist needs.

The core units studied on this programme are:

- Research Project (Pearson Set)
- Organisational Behaviour

The optional units studied are:

- Taxation
- Business Strategy
- Developing Individuals, Teams and Organisations
- Consumer Behaviour and Insight
- Planning for Growth.

Entry Requirements:

- Full level 3 qualification (A-level or BTEC or equivalent) in relevant subject area or sufficient work experience in business/ administration and finance (must produce evidence of this)
- Full level 4 qualifications will be considered
- Applicants will be interviewed and will sit an initial assessment.

Applicants should hold a total UCAS Tariff points score from relevant qualifications of at least 96 points (see page 6 for full details).

Candidates applying for apprenticeship routes need to be in employment.

Skills and Knowledge Developed:

Higher Nationals in Business have been developed to focus on:

- providing education and training for a range of careers in business such as management, administration, personnel, marketing, accounting and law

COURSE FACTS

Qualification obtained:
Higher National Diploma in Business

Awarding body:
Pearson

Course code:
TBC

UCAS code:
N101

Attendance mode:
Full time/part time

Duration:
1 year full time
2 years part time

Start date:
September 2019

End date:
June 2020 full time
June 2021 part time

Fees:
£6,129 full-time
£3,065 part-time

Number of places:
18

Progression:
Final year of a degree level programme or employment

How to apply:
College: www.liv-coll.ac.uk



- providing a general qualification which allows flexibility of study to meet local or specialist needs
- providing specialist options which meet the needs of major functions in business and allows specialisation with career progression and professional recognition in mind.

Progression:

The Higher National is a strong foundation for learners continuing to university to complete a degree. The level of independent research and critical thinking, as well as the assessment methodology, helps to prepare learners for university.

Although the Certificate is broadly equivalent to the first year of an undergraduate degree, and the Diploma is broadly equivalent to the second year of this degree, the entry point for a higher national learner to a degree is at the discretion of the higher education institution.

Special Features:

Higher nationals are designed to provide a specialist vocational programme linked to professional body requirements and National Occupational Standards, where appropriate. They offer a strong, sector-related emphasis on practical skills development alongside the development of requisite knowledge and understanding. The qualifications provide a thorough grounding in the key concepts and practical skills required in their sector and their national recognition by employers allows direct progression to employment.

Teaching Methods:

A strong commitment to the course is essential to succeeding in your HND in Business. In addition to your taught lessons, there is an expectation on all students to complete further additional work outside the classroom, whether of a research nature, working through online learning modules or time spent in the workplace.

Commitment therefore will consist of:

- attending all taught sessions and fully engaging in the range of activities planned for your learning
- completing all tasks and activities during the modules to best prepare for the end of unit assessments, which are the ones to determine success or not
- committing to further reading around the core topics, and an exposure to real-world application of the content of modules
- drawing upon any work-based experience or general life experiences
- organisation is key - from the first week ensure you are on top of your notes etc. - healthy notes make for healthy study
- familiarise yourself with the College's Learning Resource Centres and the range of resources available to you (you will be provided with reading lists and further sources of information). There is a range of textbooks available for you to use throughout your studies.

Assessment Methods:


The programme is assessed through the submission of written essays, reports and reflective logs and a series of project-based practical work-based assessments.

Formative feedback will support student progression in both written work and business outcomes.

Self and peer assessment in convener/critique situations will be an essential element of all projects and the feedback from these will enhance student achievement and progression.

The programme allows 120 credits at each level.

The social science sector is worth an estimated £24.3bn a year to the British economy.



Studying business will equip you with a set of transferable skills that allow you to access opportunities in a range of industries. You will develop a broad knowledge of how businesses operate, including understanding the customer, markets, finance, operations, marketing, strategy, human resources, accounting, policy, communications and IT.

Students who study business, gain an in-depth knowledge of analysis, interpretation and communication skills, which employers need.

Teacher Education and Training

A photograph of a man in a blue shirt standing at the front of a lecture hall, gesturing with his hands as he speaks to a group of students. The students are seated in rows of chairs, facing the speaker. The room has a red door in the background and recessed ceiling lights.

Teacher Education courses at The City of Liverpool College offer applicants the opportunity to start or progress their careers teaching in the Lifelong Learning Sector, including in further education colleges, sixth forms, adult education and other training and education settings.

Teacher Education and Training

EDUCATION AND PROFESSIONAL DEVELOPMENT BA (HONS)

About this Course:

This course is delivered in partnership with the University of Huddersfield and is aimed at teachers and trainers looking to develop their professional knowledge and skills.

We welcome applications from those working either within the education and training sector or in related areas such as health, careers or the uniformed services.

The course is particularly suitable for those wishing to progress from the Certificate in Education/DTLLS to a degree. It takes two years (part-time) to attain the degree and you can choose to complete either an unclassified degree or a degree with honours.

It is delivered using an innovative 'blended learning' approach which combines Saturday day schools at the University of Huddersfield and creative online learning activities with both individual study and collaborative study. Tutorials take place at The City of Liverpool College. You will also have unique opportunities to share and celebrate your own student research at a festival at the University. You will need access to appropriate technology and be prepared to try out new and changing technologies.

Entry Requirements:

Entry requirements are typically the Cert. Ed, DTLLS or other level 5 teaching or training qualification.

Candidates must also demonstrate a minimum of two years teaching or training experience and currently hold an educational or training role.

Skills and Knowledge Developed:

The degree will help students broaden their knowledge and understanding of theoretical and policy issues and research methods in education and training, with direct application to their own professional context. It provides an opportunity to develop student's professional and personal confidence within the student's working practice, with a view to enhancing their career.

COURSE FACTS

Qualification obtained:
BA Honours Degree in
Education and Professional
Development

Awarding body:
University of Huddersfield

Course code:
TT603

UCAS code:
N/A

Attendance mode:
Part time - blended learning

Duration:
2 years

Start date:
September 2019

End date:
July 2021

Fees:
£4,518

Number of places:
15

Progression:
Master's level study or
employment

How to apply:
College: www.liv-coll.ac.uk



Progression:

Many graduates of the BA have achieved promotion or moved into different areas of education and professional development following their studies. Students can go on to do a Master's level qualification.

Special Features:

The blended learning style creates a unique and innovative learning experience which makes full use of multimedia, the virtual learning environment, virtual classrooms, online social networks and critical friendship groups.

Teaching Methods:

The course is a part-time, blended learning programme that lasts for two years. Students will be part of an online learning community and attend the University of Huddersfield for a number of Saturday 'Day Schools' each year, as well as tutorials at The City of Liverpool College.

Assessment Methods:

The modules are assessed through a range of assignments, reports and presentations. All students receive personal tutorial support and guidance.



Teacher Education and Training Pre-Service (Lifelong Learning)

- **CERTIFICATE IN EDUCATION;**
- **PROFESSIONAL GRADUATE/ POSTGRADUATE CERTIFICATE IN EDUCATION;**
- **POSTGRADUATE DIPLOMA IN EDUCATION**

About this Course:

This course is for those who want to teach young people or adults, and helps students to develop teaching skills, reflect on current ideas about education and training, and to creatively explore the professional opportunities open to them. Students will gain competence in planning, teaching and learning, and in working with learners.

The course is a one year, full-time modular programme and is assessed through written assignments and practical assessment of teaching practice. The course is structured around modules which are based on different aspects of teachers' work such as designing learning materials, assessing students, and evaluating learning and teaching.

The course is validated by the University of Huddersfield and leads to a University of Huddersfield award.

The University of Huddersfield is a Centre for Excellence in Teacher Training in the Lifelong Learning Sector.

Entry Requirements:

- Certificate in Education applicants - students should have a qualification at Level 3 or above in the area they teach (for example, A-levels, HNC, HND, CGLI advanced, NVQ Level 3-4), and relevant work experience.
- Professional Graduate Certificate in Education applicants - students should hold a UK first degree or equivalent and relevant work experience where appropriate to the subject. Students should also hold a qualification at Level 3 or above in the subject area they teach in, if this is different from that of their degree.
- Postgraduate Certificate/Postgraduate Diploma in Education applicants - students should hold a UK first degree at 2:1 or above or equivalent and relevant work experience, where appropriate to the subject. Students should also hold a qualification at Level 3 or above in the subject area they teach in, if this is different from that of their degree.

COURSE FACTS

Qualification obtained:

- Certificate in Education
- Professional Graduate/Post Graduate Certificate in Education
- Postgraduate Diploma in Education

Awarding body:

University of Huddersfield

Course code:

TT502

UCAS code:

2DL2

Attendance mode:

Full-time

Duration:

1 year

Start date:

September 2019

End date:

June 2020

Fees:

£7,957

Number of places:

15

Progression:

BA Education and Professional Development, Master's degree or employment

How to apply:

Ucas (Teacher Training):
www.ucas.ac.uk (F/T)
College: www.liv-coll.ac.uk



Target Audience:

In particular this programme attracts applicants who aspire to teach in the Lifelong Learning sector.

Skills and Knowledge Developed:

The course aims to equip students with the skills, knowledge and understanding necessary to manage a variety of learning situations and contribute to the wider activities of colleges or training organisations. Through their placement, students gain practical experience of learning and teaching alongside other professionals. They will also develop confidence and competence in planning teaching and learning, and in working with learners in a range of classroom settings.

Progression:

All awards lead to a professional qualification for teaching in further education and sixth form colleges, adult education and a wide range of other training and educational settings. This course also provides a route to Qualified Teacher Learning and Skills (QTLS), the full professional status for teachers in Lifelong Learning (Education and Training).

Please note: the course does not confer Qualified Teacher Status (QTS) for those working or intending to work in schools, although it is currently possible for people with QTLS to obtain work in schools as a qualified teacher.

Past students have progressed to the BA in Education and Professional Development or Master's level study.

Special Features:

Credit points may be used to progress to higher level courses, such as a BA in Education and Professional Development or a Master's degree.

Teaching Methods:

The course is a one year, full-time programme. As well as attending lectures and tutorials, students learn the practical skills of teaching through a teaching practice placement. They also gain experience of learning and teaching alongside other professionals, with support from tutors and mentors.

During the course, students undertake project work, such as developing new course materials. Academic work includes critically examining creativity in teaching, subject specialist related studies, quality and professional issues. Modules also allow students to explore particular areas of interest.

Assessment Methods:

Students are required to deliver a minimum 100 hours of teaching which will be assessed by tutors and a subject specialist mentor.

Academic credit is gained by undertaking assignments and providing evidence of achievement.

This allows students to explore topics that are of interest to them, which are relevant to both their working environment and to their career development.

Teacher Education and Training In-Service (Lifelong Learning)

- **CERTIFICATE IN EDUCATION;**
- **PROFESSIONAL GRADUATE CERTIFICATE IN EDUCATION;**
- **POSTGRADUATE CERTIFICATE IN EDUCATION;**
- **POSTGRADUATE DIPLOMA IN EDUCATION**

About this Course:

This course is for those who want to either teach or are currently teaching young people or adults. It helps to develop the student's teaching skills, reflect on current ideas about education and training, and to creatively explore the professional opportunities open to them. Students will gain competence in planning, teaching and learning, and in working with learners.

The course is a two year, part-time modular programme which is assessed through written assignments and practical assessment of teaching practice. The course is structured around modules which are based on different aspects of teachers' work, such as designing learning materials, assessing students, and evaluating learning and teaching.

The course is validated by the University of Huddersfield and leads to a University of Huddersfield award.

The University of Huddersfield is a Centre for Excellence in Teacher Training in the Lifelong Learning Sector.

Entry Requirements:

- Certificate in Education applicants - students should have a qualification at level 3 or above in the area they teach (e.g. A-levels; HNC; HND; CGLI advanced; NVQ Level 3-4), and relevant work experience.
- Professional Graduate Certificate in Education applicants - students should hold a UK first degree or equivalent and relevant work experience, where appropriate to the subject. Students should also hold a qualification at level 3 or above in the subject area they teach in, if this is different from that of their degree.
- Postgraduate Certificate/Postgraduate Diploma in Education applicants - students should hold a UK first degree at 2:1 or above or equivalent, and relevant work experience, where appropriate to the subject. Students should also hold a qualification at level 3 or above in the subject area they teach in, if this is different from that of their degree.

COURSE FACTS

Qualification obtained:

- Certificate in Education
- Professional Graduate Certificate in Education
- Postgraduate Certificate in Education
- Postgraduate Diploma in Education

Awarding body:

University of Huddersfield

Course code:

TT601

UCAS code:

N/A

Attendance mode:

Part-time

Duration:

2 years

Start date:

September 2019

End date:

June 2021

Fees:

£3,978: Year 1

£3, 862: Year 2

Number of places:

15

Progression:

BA Education and Professional Development, Master's degree or employment

How to apply:

College: www.liv-coll.ac.uk (P/T)

Ucas: www.ucas.ac.uk (F/T)



Target Audience:

In particular, this programme attracts applicants who are currently employed in, or hope to gain employment in, the lifelong learning sector.

Skills and Knowledge Developed:

The course aims to equip students with the skills, knowledge and understanding necessary, not only to manage a variety of learning situations but also to contribute to the wider activities of colleges or training organisations. Through employment or voluntary teaching, students will gain practical experience of learning and teaching alongside other professionals. They will also gain confidence in planning teaching and learning, and in working with learners and other professionals.

Progression:

All awards lead to a professional qualification for teaching in further education and sixth form colleges, adult education and a wide range of other training and educational settings. This course also provides a route to Qualified Teacher Learning and Skills (QTLS), the full professional status for teachers in Lifelong Learning (Education and Training).

Please note: this course does not confer Qualified Teacher Status (QTS) for those working or intending to work in schools, although it is currently possible for people with QTLS to obtain work in schools as a qualified teacher.

Past students have progressed to the BA in Education and Professional Development or Master's level study.

Special Features:

Credit points may be used to progress to higher level courses such as the BA in Education and Professional Development or a Master's degree.

Teaching Methods:

The course is a two year, part-time programme. As well as attending lectures and tutorials, students develop the practical skills of teaching through their employment. They also have the opportunity to gain experience of learning and teaching alongside other professionals, with support from tutors, as a vehicle for their development.

During the course, students undertake project work such as developing new course materials. Academic work includes critically examining creativity in teaching, subject specialist related studies, quality and professional issues. Modules also allow students to explore particular areas of interest.

Assessment Methods:

Students are required to deliver a minimum 50 hours of teaching per year which will be assessed by tutors and a subject specialist mentor.

Academic credit is gained by undertaking assignments and providing evidence of achievement. This allows students to explore topics that are of interest to them, which are relevant to both their working environment and career development.

As part of the course, students will complete a subject specialist module. This currently requires two days attendance at the University in year two.

Students will be informed of the exact dates during the first year of the course.

Acknowledgement:

The following images supplied courtesy of City of Liverpool College photography students and reproduced with their kind permission:

Page 28 - Stairwell - Lorraine Connor, Page 28 - Building - Denise John. Pages 103, 107, 113, 117, 123 - Lauren Cowdall.



HE Open Events 2018-19

Learning Exchange,
Roscoe Street, L1 9DW

17 Oct 2018	4-6pm
21 Nov 2018	4-6pm
12 Dec 2018	4-6pm
23 Jan 2019	4-6pm
27 Feb 2019	4-6pm
20 Mar 2019	4-6pm
24 Apr 2019	4-6pm
22 May 2019	4-6pm
19 Jun 2019	4-6pm
21 Aug 2019	4-6pm



Reasons to study at The City of Liverpool College

- High student pass rates
- Access to first class teaching and great links with employers and universities
- City centre campus with state of the art facilities
- One to one supported learning
- Help with costs associated with your course
- Excellent teaching with high student engagement

The City of Liverpool College's Higher Education programmes are designed in partnership with:

- Liverpool John Moores University
- The Open University
- Pearson
- University of Huddersfield



Valid for two years, awarded June 2017



The City of Liverpool College:

The Arts Centre, Myrtle Street, L7 7JA • Clarence Street, L3 5TP • Duke Street, L1 5BG
The Learning Exchange, Roscoe Street, L1 9DW • Vauxhall Road, L3 6BN

Tel: 0151 252 3000 • Web: www.liv-coll.ac.uk